

## CDC45 Rabbit mAb

Catalog No: #49284

Package Size: #49284-1 50ul #49284-2 100ul

Orders: [order@signalwayantibody.com](mailto:order@signalwayantibody.com)Support: [tech@signalwayantibody.com](mailto:tech@signalwayantibody.com)

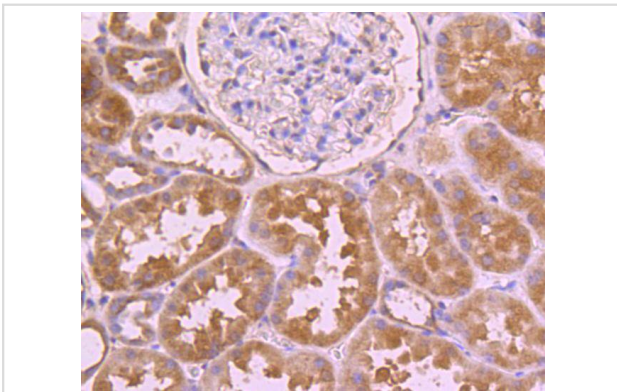
## Description

Product Name	CDC45 Rabbit mAb
Host Species	Recombinant Rabbit
Clonality	Monoclonal antibody
Clone No.	JJ091-04
Purification	ProA affinity purified
Applications	WB, ICC/IF, IHC, FC
Species Reactivity	Hu, Ms, Rt
Immunogen Description	recombinant protein
Other Names	CDC 45 antibody CDC 45L antibody CDC45 (cell division cycle 45, S.cerevisiae homolog) like antibody CDC45 antibody CDC45 cell division cycle 45 like antibody CDC45 like antibody CDC45 related protein antibody CDC45_HUMAN antibody CDC45L2 antibody Cell division control protein 45 homolog antibody Cell division cycle 45 like 2 antibody Cell division cycle 45 like antibody PORC PI 1 antibody PORC-PI-1 antibody
Accession No.	Swiss-Prot#:O75419
Uniprot	O75419
GeneID	8318;
Calculated MW	66 kDa
Formulation	1*TBS (pH7.4), 1%BSA, 40%Glycerol. Preservative: 0.05% Sodium Azide.
Storage	Store at -20°C

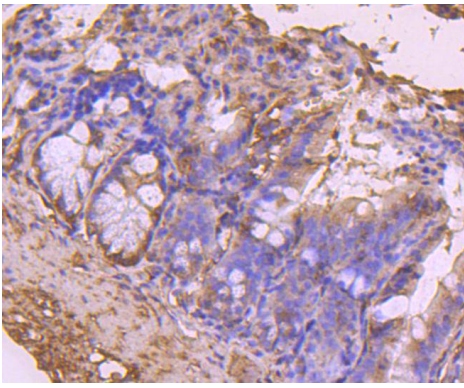
## Application Details

WB: 1:1,000 IHC: 1:50-1:200 ICC: 1:100-1:500 FC: 1:50-1:100

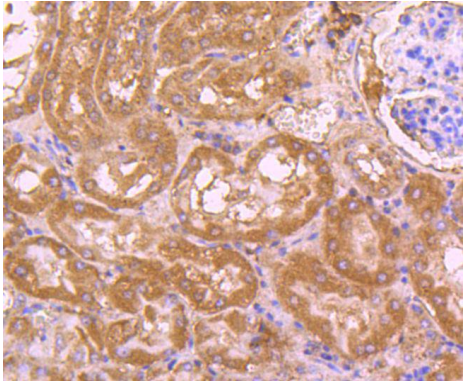
## Images



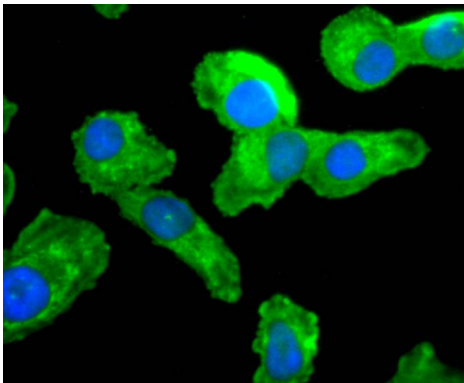
Immunohistochemical analysis of paraffin-embedded human kidney tissue using anti-CDC45 antibody. Counter stained with hematoxylin.



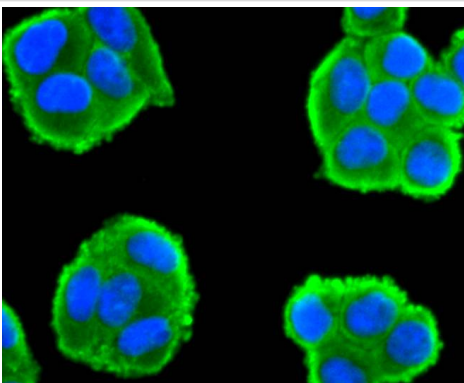
Immunohistochemical analysis of paraffin-embedded mouse colon tissue using anti-CDC45 antibody. Counter stained with hematoxylin.



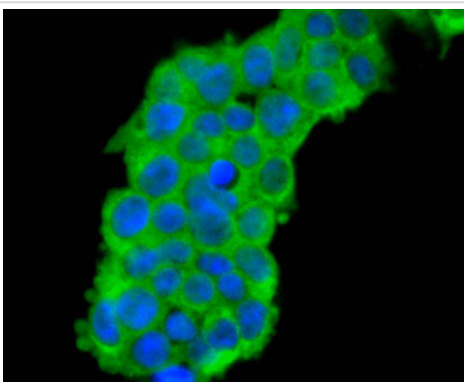
Immunohistochemical analysis of paraffin-embedded mouse kidney tissue using anti-CDC45 antibody. Counter stained with hematoxylin.



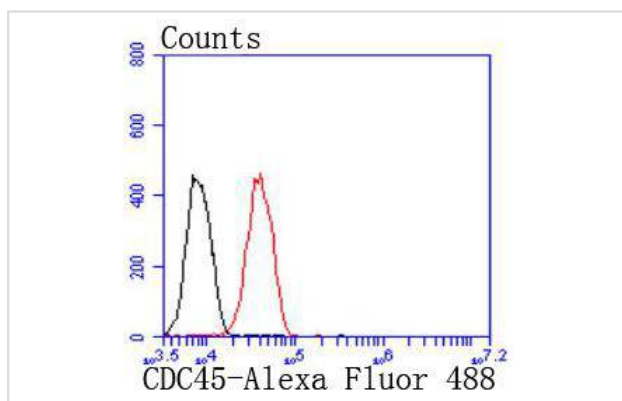
ICC staining CDC45 in A549 cells (green). The nuclear counter stain is DAPI (blue). Cells were fixed in paraformaldehyde, permeabilised with 0.25% Triton X100/PBS.



ICC staining CDC45 in Hela cells (green). The nuclear counter stain is DAPI (blue). Cells were fixed in paraformaldehyde, permeabilised with 0.25% Triton X100/PBS.



ICC staining CDC45 in 293T cells (green). The nuclear counter stain is DAPI (blue). Cells were fixed in paraformaldehyde, permeabilised with 0.25% Triton X100/PBS.



Flow cytometric analysis of 293 cells with CDC45 antibody at 1/50 dilution (red) compared with an unlabelled control (cells without incubation with primary antibody; black). Alexa Fluor 488-conjugated goat anti rabbit IgG was used as the secondary antibody.

## Background

Cell cycle events are regulated by the sequential activation and deactivation of cyclin dependent kinases (Cdks) and by the proteolysis of cyclins. The cell division cycle (Cdc) genes are required at various points in the cell cycle. Cdc25A, Cdc25B and Cdc25C protein tyrosine phosphatases function as mitotic activators by dephosphorylating Cdc2 p34 on regulatory tyrosine residues. Cdc6 and Cdc45 are the mammalian homologs of *S. cerevisiae* Cdc6 and Cdc45, which are involved in the initiation of DNA replication. Cdc37 appears to facilitate Cdk4/cyclin D1 complex formation and has been shown to form a stable complex with HSP 90. Cdc34, Cdc27 and Cdc16 function as ubiquitin-conjugating enzymes. Cdc34 is thought to be the structural and functional homolog of *S. cerevisiae* Cdc34, which is essential for the G1 to S phase transition. Cdc16 and Cdc27 are components of the APC (anaphase-promoting complex) which ubiquitinates cyclin B, resulting in cyclin B/Cdk complex degradation.

## References

Note: This product is for in vitro research use only