

SDF1 Rabbit mAb

Catalog No: #49290

Package Size: #49290-1 50ul #49290-2 100ul

Orders: order@signalwayantibody.com

Support: tech@signalwayantibody.com

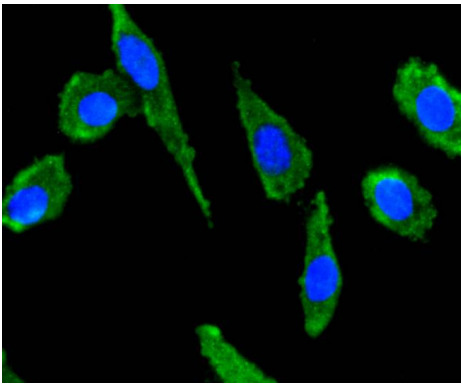
Description

Product Name	SDF1 Rabbit mAb
Host Species	Recombinant Rabbit
Clonality	Monoclonal antibody
Clone No.	JJ09-20
Purification	ProA affinity purified
Applications	WB, ICC/IF
Species Reactivity	Hu
Immunogen Description	recombinant protein
Other Names	12-O-tetradecanoylphorbol 13-acetate repressed protein 1 antibody AI174028 antibody C-X-C motif chemokine 12 antibody Chemokine (C-X-C motif) ligand 12 (stromal cell-derived factor 1) antibody Chemokine (C-X-C motif) ligand 12 antibody Chemokine CXC motif ligand 12 antibody cxcl12 antibody hIRH antibody hSDF-1 antibody Interocrine reduced in hepatomas antibody IRH antibody OTTHUMP00000019491 antibody PBSF antibody Pre-B cell growth-stimulating factor antibody SCYB12 antibody SDF 1 antibody SDF-1 antibody SDF-1-alpha(3-67) antibody SDF-1a antibody SDF-1b antibody SDF1_HUMAN antibody SDF1A antibody SDF1B antibody Stromal cell-derived factor 1 antibody Stromal cell-derived factor 1 delta antibody Stromal cell-derived factor 1 gamma antibody Stromal cell-derived factor 1a antibody Stromal cell-derived factor-1 alpha antibody Thymic lymphoma cell-stimulating factor antibody Tlsf antibody TLSF-a antibody TLSF-b antibody Tlsfa antibody Tlsfb antibody TPAR1 antibody
Accession No.	Swiss-Prot#:P48061
Uniprot	P48061
GeneID	6387;
Calculated MW	11 kDa
Formulation	1*TBS (pH7.4), 1%BSA, 40%Glycerol. Preservative: 0.05% Sodium Azide.
Storage	Store at -20°C

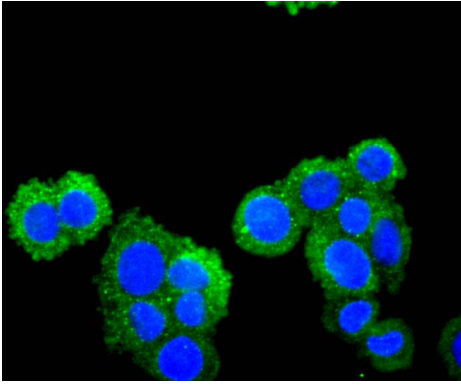
Application Details

WB: 1:1,000-1:2,000 ICC: 1:50-1:200

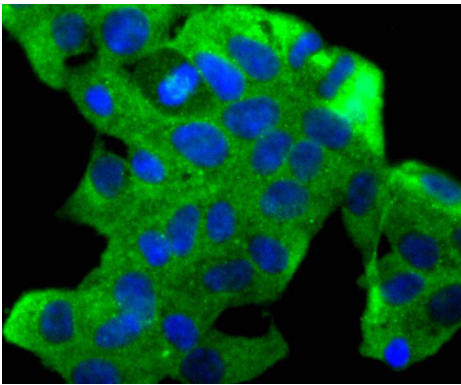
Images



ICC staining SDF1 in SH-SY-5Y cells (green). The nuclear counter stain is DAPI (blue). Cells were fixed in paraformaldehyde, permeabilised with 0.25% Triton X100/PBS.



ICC staining SDF1 in SW480 cells (green). The nuclear counter stain is DAPI (blue). Cells were fixed in paraformaldehyde, permeabilised with 0.25% Triton X100/PBS.



ICC staining SDF1 in 293 cells (green). The nuclear counter stain is DAPI (blue). Cells were fixed in paraformaldehyde, permeabilised with 0.25% Triton X100/PBS.

Background

The stromal cell derived factor 1 (SDF1, CXCL12) is a small, pro-inflammatory chemoattractant cytokine that regulates leukocyte trafficking through interactions with its cognate 7-transmembrane G protein-coupled receptors. The SDF1 receptor, CXCR4, also serves as a coreceptor for the entry of human immunodeficiency virus into target cells. SDF1 may regulate homing and maintenance of CXCR4-expressing stem or progenitor cells, including embryonic and many somatic stem cells. Many cancer cells express CXCR4, suggesting that SDF1 plays a role in cancer metastasis. Alternative splicing and differential processing during maturation produce a pair of SDF1 isoforms (SDF1 α and SDF1 β) that have different properties and biological activities. Additional isoforms of SDF1 have been reported.

References

Note: This product is for in vitro research use only