

XRN2 Polyclonal Antibody

Catalog No: #41539

Package Size: #41539-1 50ul #41539-2 100ul

Orders: order@signalwayantibody.com

Support: tech@signalwayantibody.com

Description

Product Name	XRN2 Polyclonal Antibody
Host Species	Rabbit
Clonality	Polyclonal
Purification	The antibody was affinity-purified from rabbit antiserum by affinity-chromatography using epitope-specific immunogen.
Applications	WB IHC ELISA
Species Reactivity	Hu Ms Mk
Specificity	XRN2 Polyclonal Antibody detects endogenous levels of XRN2 protein.
Immunogen Type	peptide
Immunogen Description	Synthesized peptide derived from the N-terminal region of human XRN2.
Target Name	XRN2
Other Names	XRN2; 5'-3' exoribonuclease 2; DHM1-like protein; DHP protein
Accession No.	Swiss-Prot: Q9H0D6NCBI Gene ID: 22803
Uniprot	Q9H0D6
GeneID	22803;
SDS-PAGE MW	108kd
Concentration	1mg/ml
Formulation	Liquid in PBS containing 50% glycerol, 0.5% BSA and 0.02% sodium azide.
Storage	Store at -20°C/1 year

Application Details

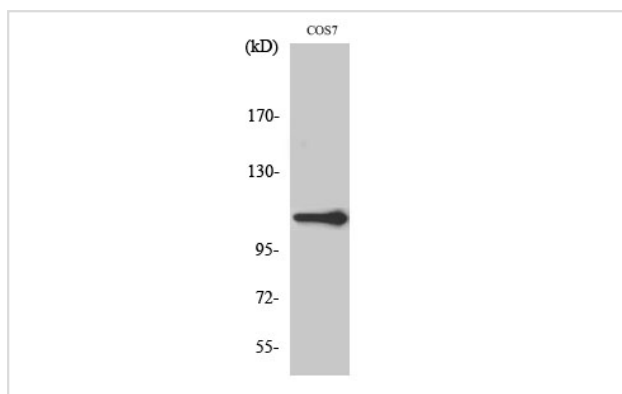
Western Blot: 1/500 - 1/2000.

Immunohistochemistry: 1/100 - 1/300.

ELISA: 1/20000.

Not yet tested in other applications.

Images



Western Blot analysis of COS7 cells using XRN2 Polyclonal Antibody

Note: This product is for in vitro research use only