

VAMP8 Rabbit mAb

Catalog No: #49324

Package Size: #49324-1 50ul #49324-2 100ul

Orders: order@signalwayantibody.com

Support: tech@signalwayantibody.com

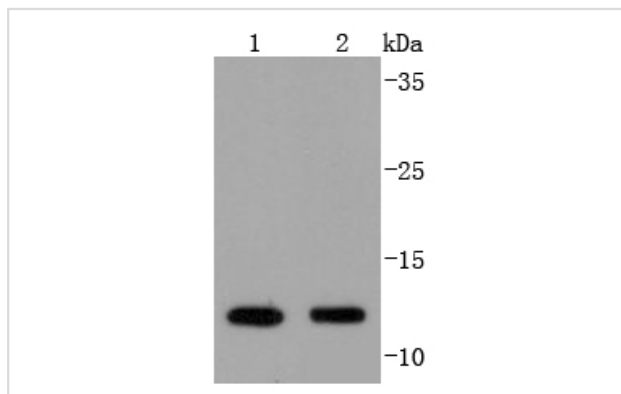
Description

Product Name	VAMP8 Rabbit mAb
Host Species	Recombinant Rabbit
Clonality	Monoclonal antibody
Clone No.	JF0963
Purification	ProA affinity purified
Applications	WB, ICC/IF, IHC, IP, FC
Species Reactivity	Hu, Ms, Rt
Immunogen Description	recombinant protein
Other Names	EDB antibody Endobrevin antibody VAMP 8 antibody VAMP-8 antibody VAMP8 antibody VAMP8_HUMAN antibody Vesicle associated membrane protein 8 antibody Vesicle-associated membrane protein 8 antibody
Accession No.	Swiss-Prot#:Q9BV40
Uniprot	Q9BV40
GeneID	8673;
Calculated MW	11 kDa
Formulation	1*TBS (pH7.4), 1%BSA, 40%Glycerol. Preservative: 0.05% Sodium Azide.
Storage	Store at -20°C

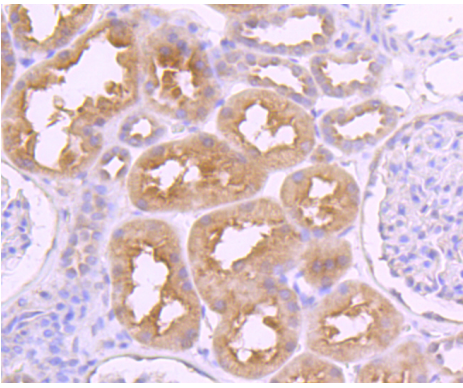
Application Details

WB: 1:1,000-1:2,000 IHC: 1:50-1:200 ICC: 1:50-1:100FC: 1:50-1:100

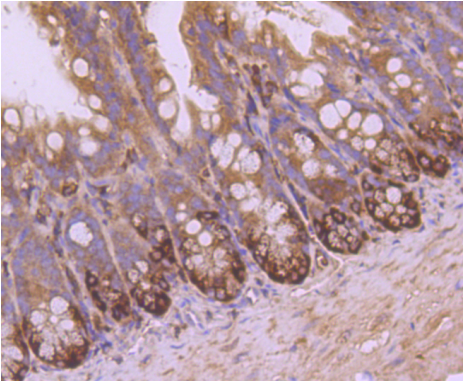
Images



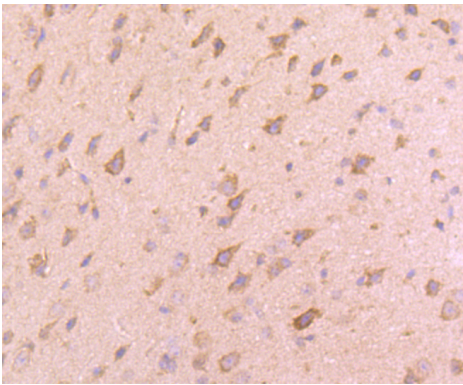
Western blot analysis of VAMP8 on different lysates using anti-VAMP8 antibody at 1/1,000 dilution. Positive control:
Lane 1: Hela Lane 2: Mouse kidney



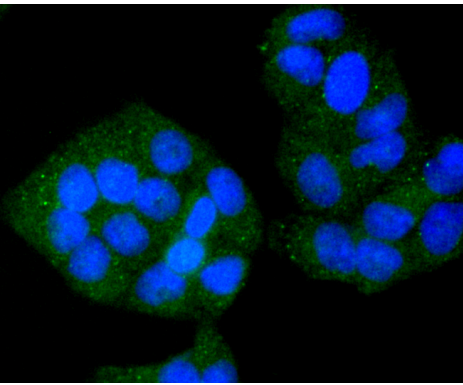
Immunohistochemical analysis of paraffin-embedded human kidney tissue using anti-VAMP8 antibody. Counter stained with hematoxylin.



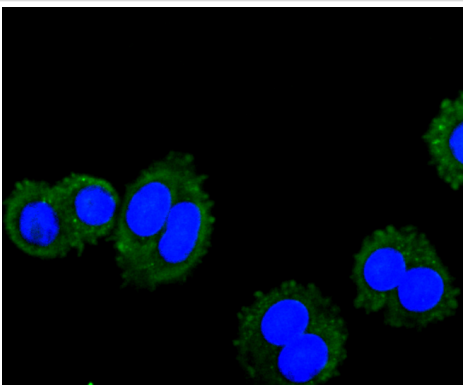
Immunohistochemical analysis of paraffin-embedded mouse colon tissue using anti-VAMP8 antibody. Counter stained with hematoxylin.



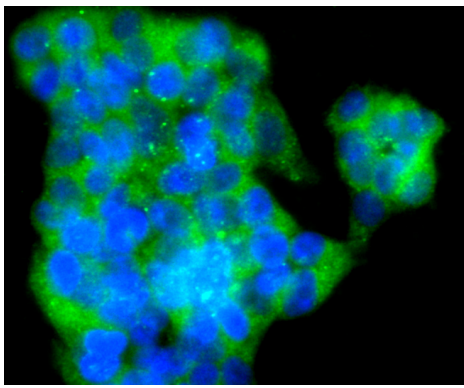
Immunohistochemical analysis of paraffin-embedded mouse brain tissue using anti-VAMP8 antibody. Counter stained with hematoxylin.



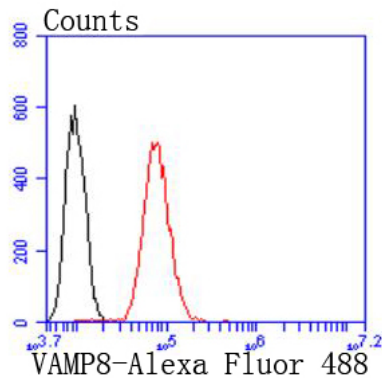
ICC staining VAMP8 in HeLa cells (green). The nuclear counter stain is DAPI (blue). Cells were fixed in paraformaldehyde, permeabilised with 0.25% Triton X100/PBS.



ICC staining VAMP8 in SW480 cells (green). The nuclear counter stain is DAPI (blue). Cells were fixed in paraformaldehyde, permeabilised with 0.25% Triton X100/PBS.



ICC staining VAMP8 in 293T cells (green). The nuclear counter stain is DAPI (blue). Cells were fixed in paraformaldehyde, permeabilised with 0.25% Triton X100/PBS.



Flow cytometric analysis of Hela cells with VAMP8 antibody at 1/50 dilution (red) compared with an unlabelled control (cells without incubation with primary antibody; black). Alexa Fluor 488-conjugated goat anti rabbit IgG was used as the secondary antibody.

Background

Syntaxins were originally thought to be docking proteins, but have more recently been categorized as anchoring proteins that anchor themselves to the cytoplasmic surfaces of cellular membranes. Syntaxins bind to various proteins involved in exocytosis, including VAMPs (vesicle-associated membrane proteins), NSF (N-ethylmaleimide-sensitive factor), SNAPs (soluble NSF attachment proteins) and Synaptotagmin. Endobrevin, also designated VAMP-8 or ED, is a 100 amino acid single-pass type IV membrane protein that belongs to the synaptobrevin family. Similar in sequence to the synaptobrevins, endobrevin is abundantly expressed in kidney, moderately expressed in heart and spleen, and slightly expressed in brain, thymus and liver. Endobrevin interacts specifically with the SNAPs, most likely through an endobrevin-containing SNARE complex.

References

Note: This product is for in vitro research use only