

## ZC3H11A Polyclonal Antibody

Catalog No: #41541

Package Size: #41541-1 50ul #41541-2 100ul

Orders: order@signalwayantibody.com

Support: tech@signalwayantibody.com

## Description

Product Name	ZC3H11A Polyclonal Antibody
Host Species	Rabbit
Clonality	Polyclonal
Purification	The antibody was affinity-purified from rabbit antiserum by affinity-chromatography using epitope-specific immunogen.
Applications	WB ELISA
Species Reactivity	Hu Mk
Specificity	ZC3H11A Polyclonal Antibody detects endogenous levels of ZC3H11A protein.
Immunogen Type	peptide
Immunogen Description	Synthesized peptide derived from the Internal region of human ZC3H11A.
Target Name	ZC3H11A
Other Names	ZC3H11A; KIAA0663; ZC3HDC11A; Zinc finger CCCH domain-containing protein 11A
Accession No.	Swiss-Prot: O75152NCBI Gene ID: 9877
Uniprot	O75152
GeneID	9877;
SDS-PAGE MW	85kd
Concentration	1mg/ml
Formulation	Liquid in PBS containing 50% glycerol, 0.5% BSA and 0.02% sodium azide.
Storage	Store at -20°C/1 year

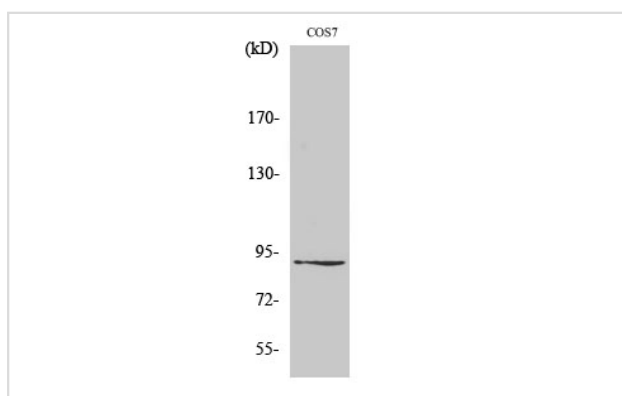
## Application Details

Western Blot: 1/500 - 1/2000.

ELISA: 1/20000.

Not yet tested in other applications.

## Images



Western Blot analysis of COS7 cells using ZC3H11A Polyclonal Antibody

---

Note: This product is for in vitro research use only