

## Thymidine Kinase 1 Rabbit mAb

Catalog No: #49345

Package Size: #49345-1 50ul #49345-2 100ul

Orders: order@signalwayantibody.com

Support: tech@signalwayantibody.com

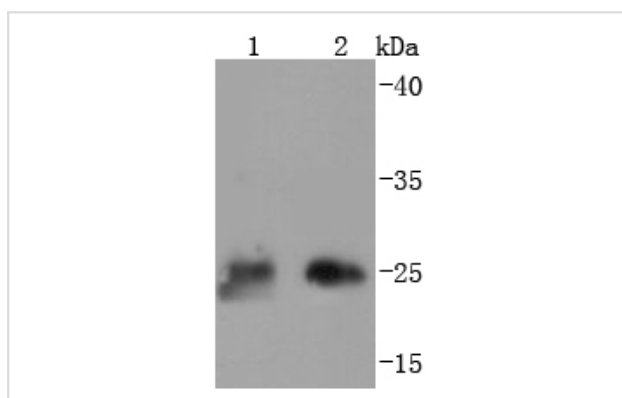
## Description

Product Name	Thymidine Kinase 1 Rabbit mAb
Host Species	Recombinant Rabbit
Clonality	Monoclonal antibody
Clone No.	JF0970
Purification	ProA affinity purified
Applications	WB, ICC/IF, IHC, IP, FC
Species Reactivity	Hu
Immunogen Description	recombinant protein
Other Names	cytosolic antibody KITH_HUMAN antibody Thymidine kinase 1 antibody Thymidine kinase 1 soluble antibody Thymidine kinase 1 soluble isoform antibody Thymidine kinase antibody Thymidine kinase cytosolic antibody TK 1 antibody TK 2 antibody TK1 antibody Tk1a antibody Tk1b antibody TK2 antibody
Accession No.	Swiss-Prot#:P04183
Uniprot	P04183
GeneID	7083;
Calculated MW	25 kDa
Formulation	1*TBS (pH7.4), 1%BSA, 40%Glycerol. Preservative: 0.05% Sodium Azide.
Storage	Store at -20°C

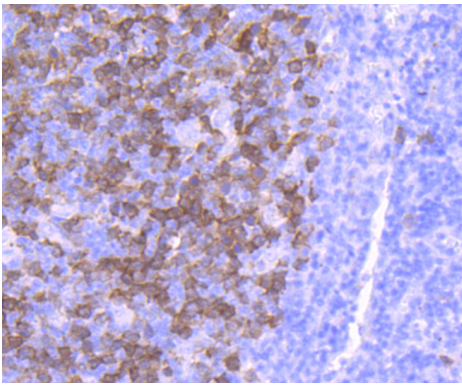
## Application Details

WB: 1:1,000 IHC: 1:50-1:200 ICC: 1:50-1:200 FC: 1:50-1:100

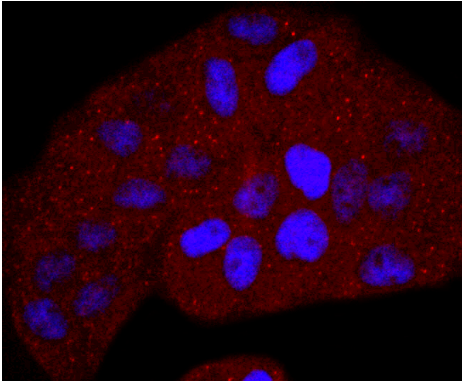
## Images



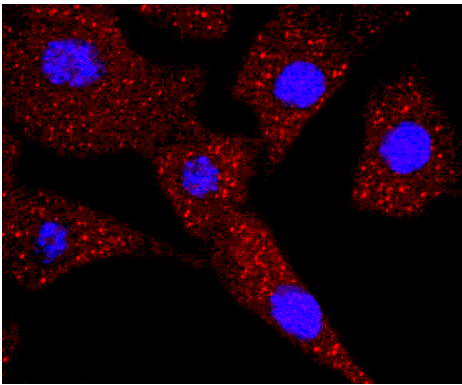
Western blot analysis of Thymidine Kinase 1 on different lysates using anti-Thymidine Kinase 1 antibody at 1/1,000 dilution. Positive control: Lane 1: 293T Lane 2: Hela



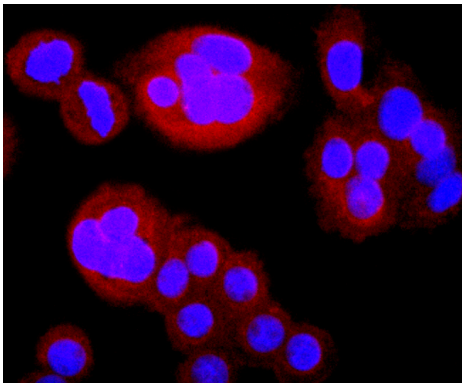
Immunohistochemical analysis of paraffin-embedded human tonsil tissue using anti-Thymidine Kinase 1 antibody. Counter stained with hematoxylin.



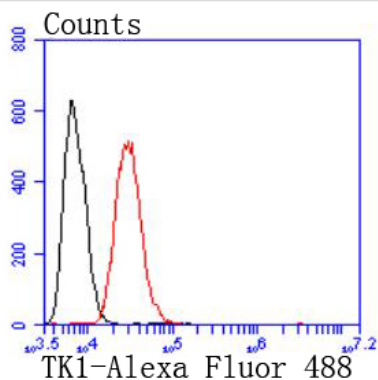
ICC staining Thymidine Kinase 1 in HeLa cells (red). The nuclear counter stain is DAPI (blue). Cells were fixed in paraformaldehyde, permeabilised with 0.25% Triton X100/PBS.



ICC staining Thymidine Kinase 1 in NIH/3T3 cells (red). The nuclear counter stain is DAPI (blue). Cells were fixed in paraformaldehyde, permeabilised with 0.25% Triton X100/PBS.



ICC staining Thymidine Kinase 1 in SW480 cells (red). The nuclear counter stain is DAPI (blue). Cells were fixed in paraformaldehyde, permeabilised with 0.25% Triton X100/PBS.



Flow cytometric analysis of HeLa cells with Thymidine Kinase 1 antibody at 1/50 dilution (red) compared with an unlabelled control (cells without incubation with primary antibody; black). Alexa Fluor 488-conjugated goat anti rabbit IgG was used as the secondary antibody

## Background

---

Thymidine Kinase (TK1) is a highly conserved phosphotransferase that is present in most living cells. Thymidine Kinase catalyzes the phosphorylation reaction: deoxythymidine + ATP = deoxythymidine 5'-phosphate + ADP; it is thus involved in the reaction chain to introduce deoxythymidine into the DNA. Thymidine kinase is required for the action of many antiviral drugs, such as azidothymidine (AZT), and is also used to select hybridoma cell lines in the production of monoclonal antibodies. Thymidine Kinase has many clinical applications as it is only present in anticipation of cell division. Because of this, Thymidine Kinase can be used as a proliferation marker in the diagnosis, treatment, and follow-up of malignant diseases, especially hematological malignancies. Thymidine Kinase may be observed as a monomer, dimer, trimer or tetramer.

## References

---

---

Note: This product is for in vitro research use only