

gamma Catenin Rabbit mAb

Catalog No: #49347

Package Size: #49347-1 50ul #49347-2 100ul

Orders: order@signalwayantibody.com

Support: tech@signalwayantibody.com

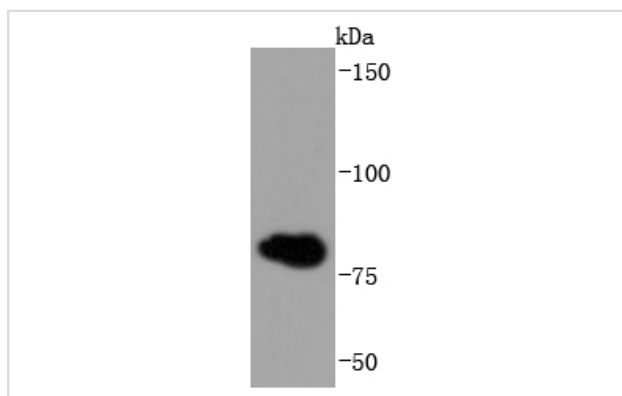
Description

Product Name	gamma Catenin Rabbit mAb
Host Species	Recombinant Rabbit
Clonality	Monoclonal antibody
Clone No.	JF0973
Purification	ProA affinity purified
Applications	WB, ICC/IF, IHC, FC
Species Reactivity	Hu, Ms, Rt
Immunogen Description	recombinant protein
Other Names	ARVD 12 antibody ARVD12 antibody Catenin (cadherin associated protein), gamma 80kDa antibody catenin (cadherin-associated protein) gamma (80kD) antibody Catenin gamma antibody CTNNG antibody Desmoplakin 3 antibody Desmoplakin III antibody Desmoplakin-3 antibody Desmoplakin3 antibody DesmoplakinIII antibody DP 3 antibody DP III antibody DP3 antibody DPIII antibody gamma catenin antibody Junction plakoglobin antibody JUP antibody OTTHUMP00000164732 antibody OTTHUMP00000164735 antibody OTTHUMP00000164738 antibody PDGB antibody PKGB antibody PLAK_HUMAN antibody PLAKOGLOBIN antibody
Accession No.	Swiss-Prot#:P14923
Uniprot	P14923
GeneID	3728;
Calculated MW	82 kDa
Formulation	1*TBS (pH7.4), 1%BSA, 40%Glycerol. Preservative: 0.05% Sodium Azide.
Storage	Store at -20°C

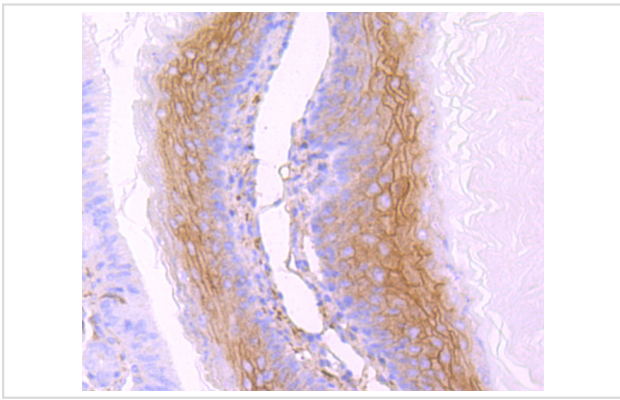
Application Details

WB: 1:1,000-1:2,000 IHC: 1:50-1:200 ICC: 1:100-1:500FC: 1:50-1:100

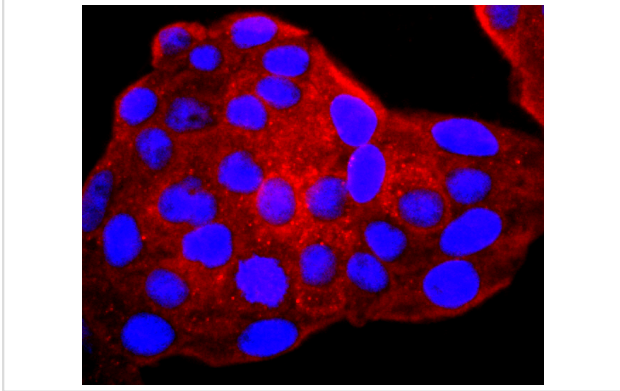
Images



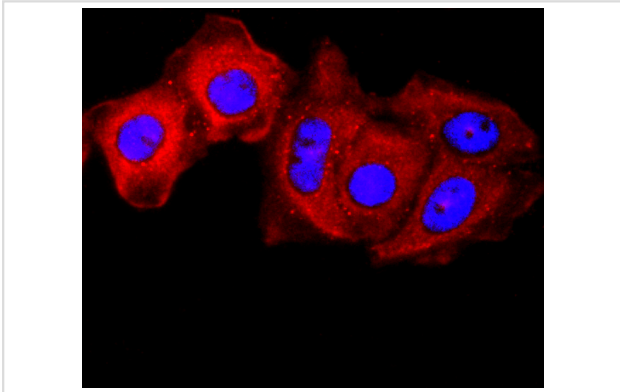
Western blot analysis of gamma Catenin on HeLa cells lysates using anti-gamma Catenin antibody at 1/1,000 dilution.



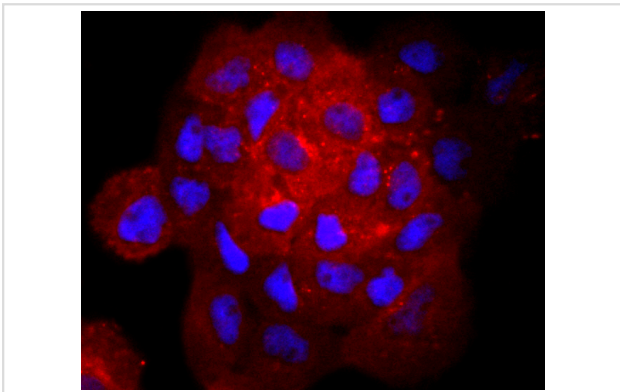
Immunohistochemical analysis of paraffin-embedded mouse stomach tissue using anti-gamma Catenin antibody. Counter stained with hematoxylin.



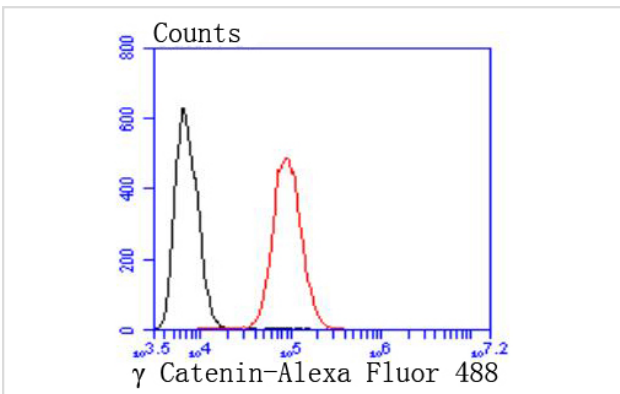
ICC staining gamma Catenin in HeLa cells (red). The nuclear counter stain is DAPI (blue). Cells were fixed in paraformaldehyde, permeabilised with 0.25% Triton X100/PBS.



ICC staining gamma Catenin in MCF-7 cells (red). The nuclear counter stain is DAPI (blue). Cells were fixed in paraformaldehyde, permeabilised with 0.25% Triton X100/PBS.



ICC staining gamma Catenin in A431 cells (red). The nuclear counter stain is DAPI (blue). Cells were fixed in paraformaldehyde, permeabilised with 0.25% Triton X100/PBS.



Flow cytometric analysis of HeLa cells with gamma Catenin antibody at 1/50 dilution (red) compared with an unlabelled control (cells without incubation with primary antibody; black). Alexa Fluor 488-conjugated goat anti rabbit IgG was used as the secondary antibody

Background

The catenins, α , β and γ , are proteins which bind to the highly conserved, intracellular cytoplasmic tail of E-cadherin. Together, the catenin/cadherin complexes play an important role mediating cellular adhesion. α -catenin was initially described as an E-cadherin associated protein, and since has been shown to associate with other members of the cadherin family, such as N-cadherin and P-cadherin. β -catenin associates with the cytoplasmic portion of E-cadherin, which is necessary for the function of E-cadherin as an adhesion molecule. β -catenin has also been found in complexes with the tumor suppressor protein APC. γ -catenin, also known as plakoglobin, binds with α -catenin and N-cadherin. It has been shown that the transmembrane phosphatase PTP[?] associates with catenin/cadherin complexes and may regulate complex signaling.

References

Note: This product is for in vitro research use only