

S100A10 Rabbit mAb

Catalog No: #49352

Package Size: #49352-1 50ul #49352-2 100ul

Orders: order@signalwayantibody.comSupport: tech@signalwayantibody.com

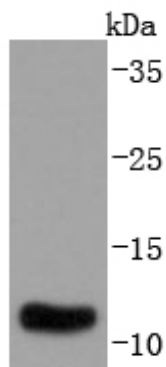
Description

Product Name	S100A10 Rabbit mAb
Host Species	Recombinant Rabbit
Clonality	Monoclonal antibody
Clone No.	JF0987
Purification	ProA affinity purified
Applications	WB, IHC
Species Reactivity	Hu, Ms
Immunogen Description	recombinant protein
Other Names	42C antibody AA409961 antibody AL024248 antibody Annexin II ligand antibody Annexin II ligand, calpactin I, light polypeptide antibody Annexin II tetramer (Allt) p11 subunit antibody Annexin II, light chain antibody ANX2L antibody ANX2LG antibody Ca[1] antibody CAL12 antibody CAL1L antibody Calpactin I light chain antibody Calpactin I, p11 subunit antibody Calpactin-1 light chain antibody Cellular ligand of annexin II antibody CLP11 antibody GP11 antibody MGC111133 antibody Nerve growth factor-induced protein 42C antibody OTTHUMP00000015269 antibody OTTHUMP00000015270 antibody p10 antibody p10 protein antibody p11 antibody Protein S100 A10 antibody Protein S100-A10 antibody S100 calcium binding protein A10 (annexin II ligand, calpactin I, light polypeptide (p11)) antibody S100 calcium binding protein A10 (calpactin) antibody S100 calcium binding protein A10 antibody S100 calcium-binding protein A10 antibody S100a10 antibody S10AA_HUMAN antibody
Accession No.	Swiss-Prot#:P60903
Uniprot	P60903
GeneID	6281;
Calculated MW	11 kDa
Formulation	1*TBS (pH7.4), 1%BSA, 40%Glycerol. Preservative: 0.05% Sodium Azide.
Storage	Store at -20°C

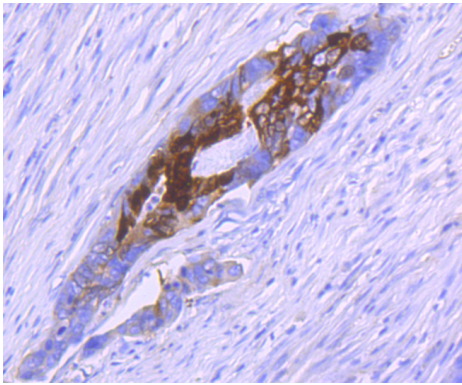
Application Details

WB: 1:1,000-1:2,000 IHC: 1:50-1:200

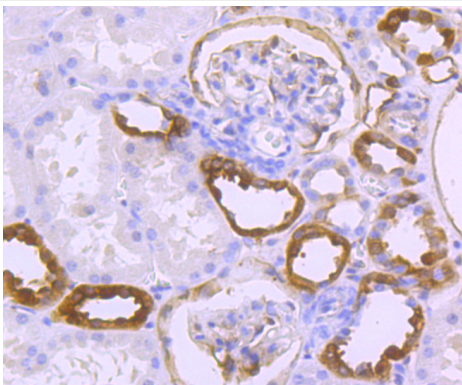
Images



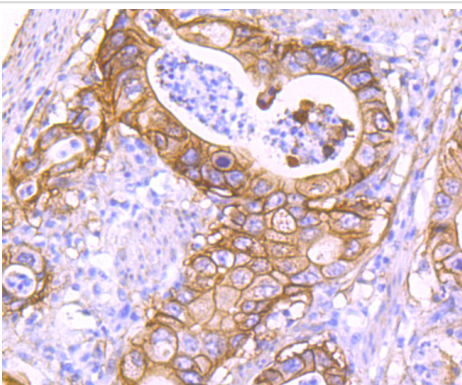
Western blot analysis of S100A10 on human lung lysates using anti-S100A10 antibody at 1/1,000 dilution.



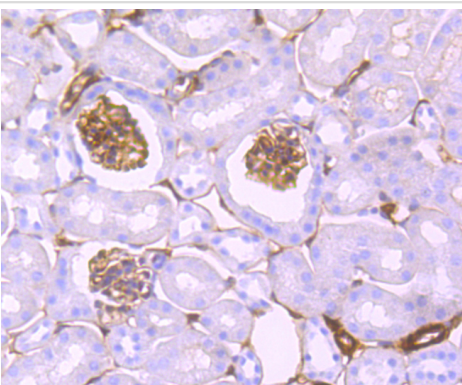
Immunohistochemical analysis of paraffin-embedded human colon cancer tissue using anti-S100A10 antibody. Counter stained with hematoxylin.



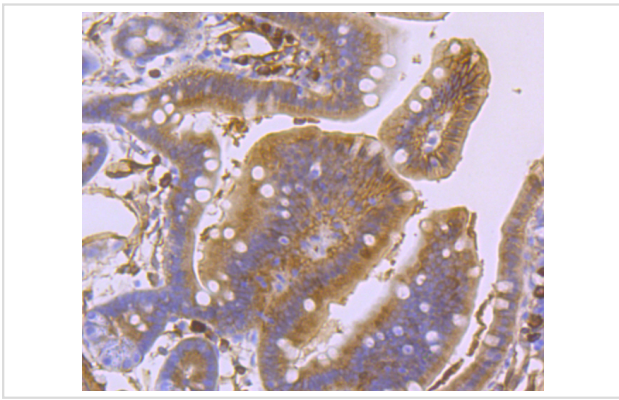
Immunohistochemical analysis of paraffin-embedded human kidney tissue using anti-S100A10 antibody. Counter stained with hematoxylin.



Immunohistochemical analysis of paraffin-embedded human gastric carcinoma tissue using anti-S100A10 antibody. Counter stained with hematoxylin.



Immunohistochemical analysis of paraffin-embedded mouse kidney tissue using anti-S100A10 antibody. Counter stained with hematoxylin.



Immunohistochemical analysis of paraffin-embedded mouse colon tissue using anti-S100A10 antibody. Counter stained with hematoxylin.

Background

The S-100 family of calcium-activated proteins interact with a range of target proteins to modulate biological signaling pathways. Numerous cancer cell lines overexpress the plasminogen receptor S-100A10 on the extracellular cell surface, where it forms a heterotetrameric complex with Annexin II, though this association is not required for plasma membrane localization or binding and activation of plasminogen. Additionally, S-100A10 acts as a cellular chaperone for hepatitis B (Hep B) virus polymerase. Hep B virus polymerase normally localizes to the cytoplasm only, though in the presence of S-100A10 a portion relocates to the nucleus, implying a role for S-100A10 and intracellular calcium in the process of viral replication.

References

Note: This product is for in vitro research use only