

Dysferlin Rabbit mAb

Catalog No: #49359

Package Size: #49359-1 50ul #49359-2 100ul

Orders: order@signalwayantibody.comSupport: tech@signalwayantibody.com

Description

Product Name	Dysferlin Rabbit mAb
Clone No.	JF05-54
Purification	Affinity-chromatography
Applications	WB, ICC/IF, IHC
Species Reactivity	Hu, Ms
Immunogen Description	A synthesized peptide derived from human Dysferlin
Other Names	DMAT antibody DYSF antibody DYSF_HUMAN antibody Dysferlin antibody Dysferlin limb girdle muscular dystrophy 2B (autosomal recessive) antibody Dysferlin limb girdle muscular dystrophy 2B antibody Dystrophy associated fer 1 like 1 antibody Dystrophy associated fer 1 like protein antibody Dystrophy associated fer1 like 1 antibody Dystrophy associated fer1 like protein antibody Dystrophy-associated fer-1-like protein antibody Fer 1 like protein 1 antibody Fer-1-like protein 1 antibody Fer1 like protein 1 antibody FER1L1 antibody FLJ00175 antibody FLJ90168 antibody LGMD 2B antibody LGMD2B antibody Limb girdle muscular dystrophy 2B (autosomal recessive) antibody Limb girdle muscular dystrophy 2B antibody Miyoshi myopathy antibody MM antibody MMD1 antibody
Accession No.	Swiss-Prot#:O75923
Uniprot	O75923
GeneID	8291;
Calculated MW	237 kDa
Formulation	Rabbit IgG in 10mM phosphate buffered saline , pH 7.4, 150mM sodium chloride, 0.05% BSA, 0.02% sodium azide and 50% glycerol.
Storage	Store at +4°C for short term. Store at -20°C for long term. Avoid freeze/thaw cycle.

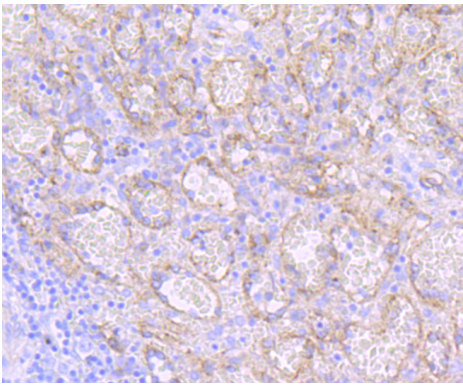
Application Details

WB 1:1000-1:2000

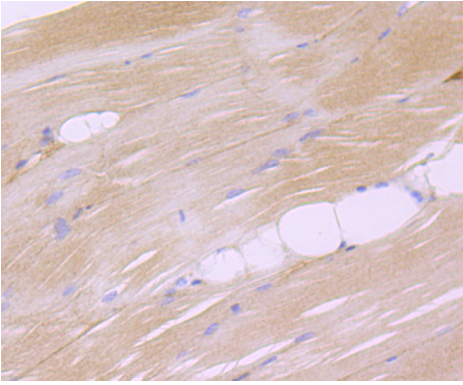
IHC 1:100-1:200

ICC/IF 1:50-1:200

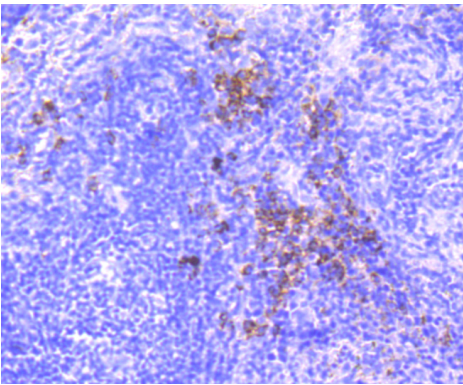
Images



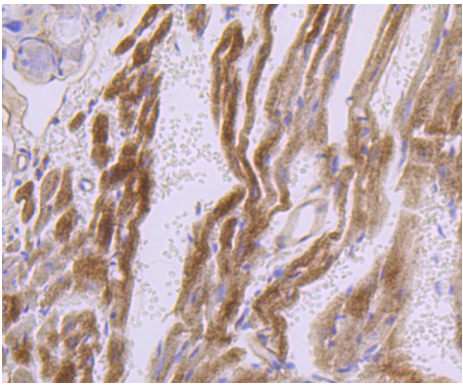
Immunohistochemical analysis of paraffin-embedded human spleen tissue using anti-Dysferlin antibody. Counter stained with hematoxylin.



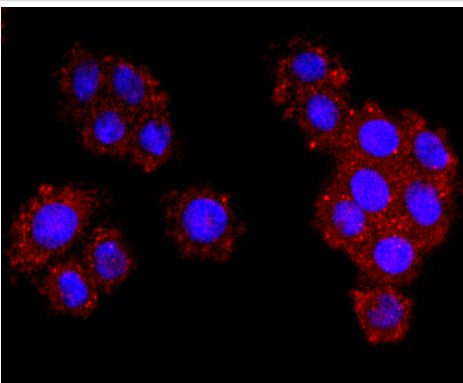
Immunohistochemical analysis of paraffin-embedded mouse skeletal muscle tissue using anti-Dysferlin antibody. Counter stained with hematoxylin.



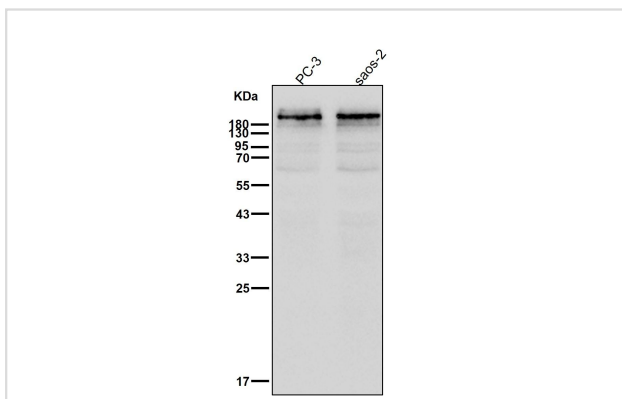
Immunohistochemical analysis of paraffin-embedded mouse spleen tissue using anti-Dysferlin antibody. Counter stained with hematoxylin.



Immunohistochemical analysis of paraffin-embedded mouse heart tissue using anti-Dysferlin antibody. Counter stained with hematoxylin.



ICC staining Dysferlin in SW480 cells (red). The nuclear counter stain is DAPI (blue). Cells were fixed in paraformaldehyde, permeabilised with 0.25% Triton X100/PBS.



All lanes use the Antibody at 1:1K dilution for 1 hour at room temperature.

Background

Key calcium ion sensor involved in the Ca^{2+} -triggered synaptic vesicle-plasma membrane fusion. Plays a role in the sarcolemma repair mechanism of both skeletal muscle and cardiomyocytes that permits rapid resealing of membranes disrupted by mechanical stress.

Note: This product is for in vitro research use only