

Galectin 3 Rabbit mAb

Catalog No: #49362

Package Size: #49362-1 50ul #49362-2 100ul

Orders: order@signalwayantibody.com

Support: tech@signalwayantibody.com

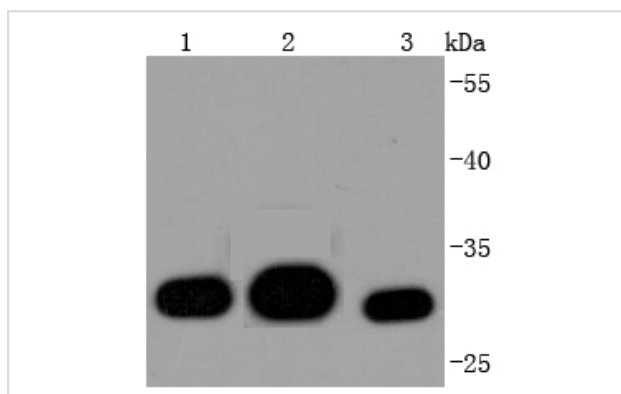
Description

Product Name	Galectin 3 Rabbit mAb
Host Species	Recombinant Rabbit
Clonality	Monoclonal antibody
Clone No.	JF39-10
Purification	ProA affinity purified
Applications	WB, ICC/IF, FC
Species Reactivity	Hu, Rt
Immunogen Description	recombinant protein
Other Names	35 kDa lectin antibody Carbohydrate binding protein 35 antibody Carbohydrate-binding protein 35 antibody CBP 35 antibody CBP35 antibody Gal-3 antibody GAL3 antibody Galactose-specific lectin 3 antibody Galactoside-binding protein antibody GALBP antibody Galectin 3 internal gene,included antibody Galectin-3 antibody Galectin3 antibody GALIG antibody GBP antibody IgE binding protein antibody IgE-binding protein antibody L 31 antibody L 34 antibody L-31 antibody L-34 galactoside-binding lectin antibody L31 antibody Laminin-binding protein antibody Lectin L-29 antibody Lectin, galactose binding, soluble 3 antibody LEG3_HUMAN antibody LGALS2 antibody LGALS3 antibody MAC 2 antigen antibody Mac-2 antibody Mac-2 antigen antibody MAC2 antibody Macrophage galactose-specific lectin antibody MGC105387 antibody
Accession No.	Swiss-Prot#:P17931
Uniprot	P17931
GeneID	3958;
Calculated MW	26 kDa
Formulation	1*TBS (pH7.4), 1%BSA, 40%Glycerol. Preservative: 0.05% Sodium Azide.
Storage	Store at -20°C

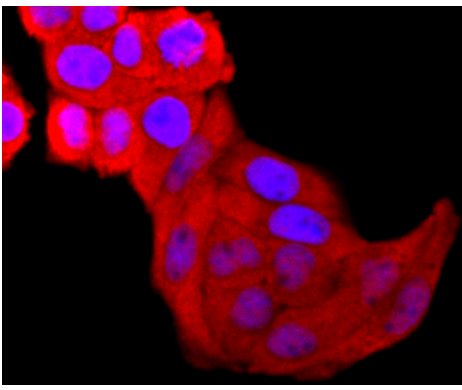
Application Details

WB: 1:1,000-5,000 ICC: 1:50-1:200 FC: 1:50-1:100

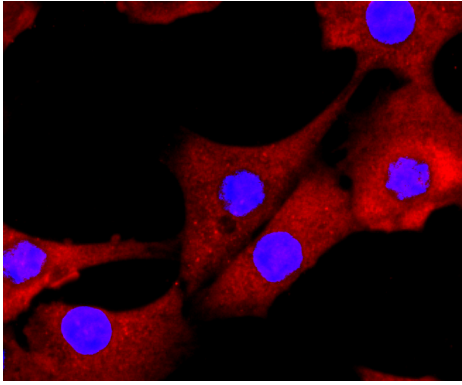
Images



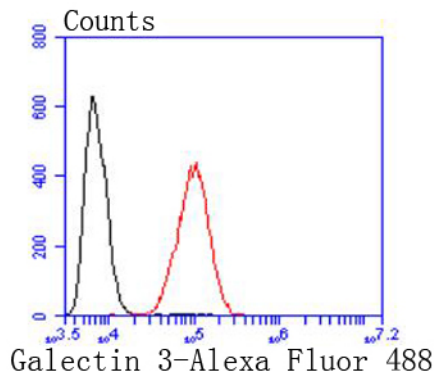
Western blot analysis of Galectin 3 on different lysates using anti-Galectin 3 antibody at 1/1,000 dilution. Positive control:
Lane 1: Hela Lane 2: NIH/3T3 Lane 3: THP-1



ICC staining Galectin 3 in HeLa cells (red). The nuclear counter stain is DAPI (blue). Cells were fixed in paraformaldehyde, permeabilised with 0.25% Triton X100/PBS.



ICC staining Galectin 3 in NIH/3T3 cells (red). The nuclear counter stain is DAPI (blue). Cells were fixed in paraformaldehyde, permeabilised with 0.25% Triton X100/PBS.



Flow cytometric analysis of HeLa cells with Galectin 3 antibody at 1/50 dilution (red) compared with an unlabelled control (cells without incubation with primary antibody; black). Alexa Fluor 488-conjugated goat anti rabbit IgG was used as the secondary antibody

Background

Galectins are a family of soluble b-galactoside-binding animal lectins that modulate cell-to-cell adhesion and cell-to-extracellular matrix (ECM) interactions and play a role in tumor progression, pre-mRNA splicing and apoptosis. The galectin-3 protein, also known as Mac-2, hMac-2, GALBP, CBP35 or LGALS3, contains a single carbohydrate binding domain, which binds galactose-containing glycoconjugates. Galectin-3 is expressed in colonic and intestinal epithelium, inflammatory macrophages, papillary and follicular carcinomas, neoplastic astrocytes and some B and T lymphocytes. Upregulated expression of galectin-3 is involved in cancer progression and metastasis. Galectin-3 mediates the endocytosis of β 1 Integrins in a lactose-dependent manner and is associated with thyroid malignancy and Crohn's disease. It may also be used as a marker for diagnosing cases involving Hurthle cell adenomas and carcinomas.

References

Note: This product is for in vitro research use only