

Albumin Rabbit mAb

Catalog No: #49369

Package Size: #49369-1 50ul #49369-2 100ul

Orders: order@signalwayantibody.com

Support: tech@signalwayantibody.com

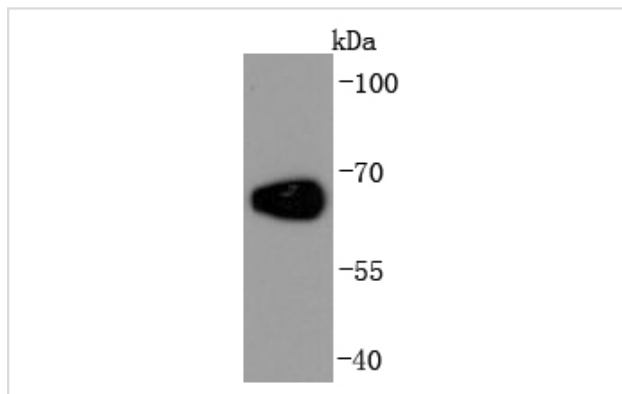
Description

Product Name	Albumin Rabbit mAb
Host Species	Recombinant Rabbit
Clonality	Monoclonal antibody
Clone No.	JF32-10
Purification	ProA affinity purified
Applications	WB, IHC
Species Reactivity	Hu, Ms, Rt, Cow
Immunogen Description	recombinant protein
Other Names	alb antibody ALBU_HUMAN antibody Albumin (32 AA) antibody Albumin (AA 34) antibody cell growth inhibiting protein 42 antibody DKFZp779N1935 antibody GIG20 antibody GIG42 antibody growth-inhibiting protein 20 antibody OTTHUMP00000220436 antibody OTTHUMP00000220438 antibody OTTHUMP00000220439 antibody PRO0883 antibody PRO0903 antibody PRO1341 antibody PRO1708 antibody PRO2044 antibody PRO2619 antibody PRO2675 antibody Serum albumin antibody UNQ696/PRO1341 antibody
Accession No.	Swiss-Prot#:P02768
Uniprot	P02768
GeneID	213;
Calculated MW	69 kDa
Formulation	1*TBS (pH7.4), 1%BSA, 40%Glycerol. Preservative: 0.05% Sodium Azide.
Storage	Store at -20°C

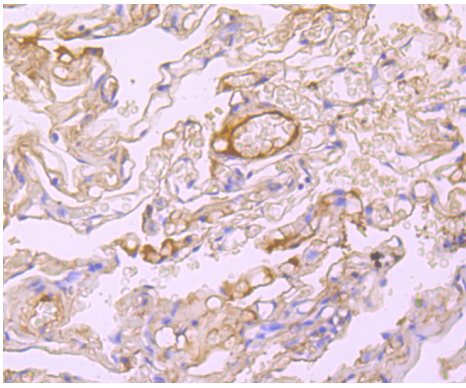
Application Details

WB: 1:1,000-5,000IHC: 1:50-1:200

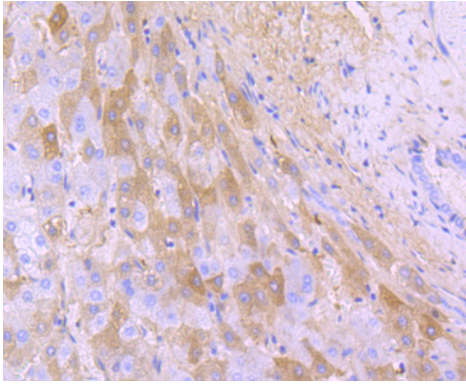
Images



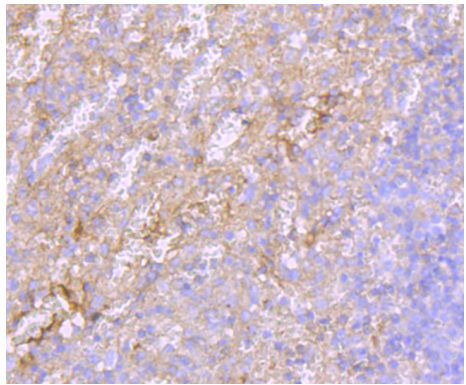
Western blot analysis of Albumin on HeLa cells lysates using anti-Albumin antibody at 1/1,000 dilution.



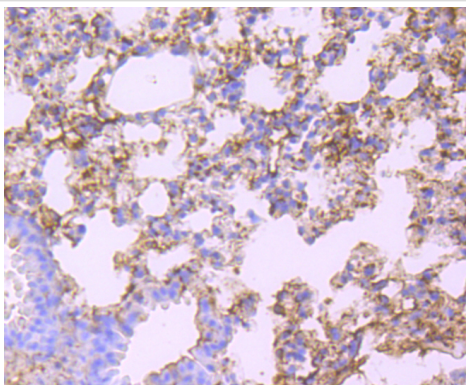
Immunohistochemical analysis of paraffin-embedded human lung tissue using anti-Albumin antibody. Counter stained with hematoxylin.



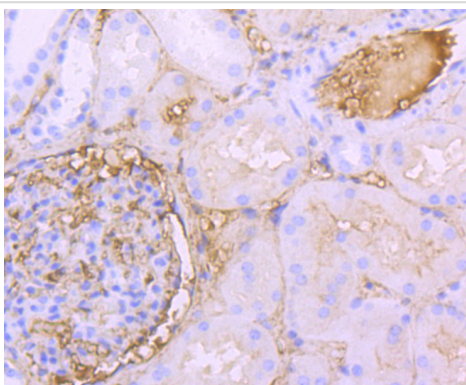
Immunohistochemical analysis of paraffin-embedded human liver tissue using anti-Albumin antibody. Counter stained with hematoxylin.



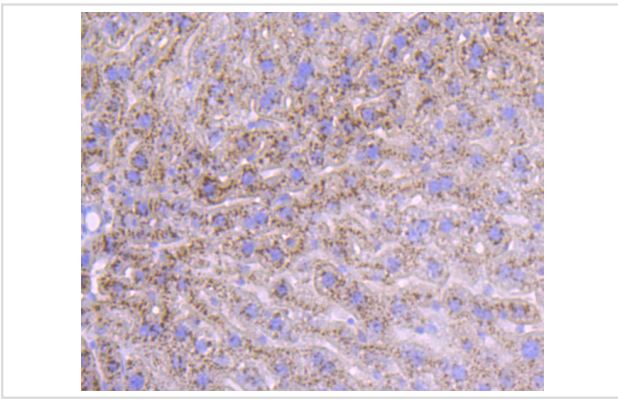
Immunohistochemical analysis of paraffin-embedded human spleen tissue using anti-Albumin antibody. Counter stained with hematoxylin.



Immunohistochemical analysis of paraffin-embedded mouse lung tissue using anti-Albumin antibody. Counter stained with hematoxylin.



Immunohistochemical analysis of paraffin-embedded human kidney tissue using anti-Albumin antibody. Counter stained with hematoxylin.



Immunohistochemical analysis of paraffin-embedded mouse liver tissue using anti-Albumin antibody. Counter stained with hematoxylin.

Background

Serum albumin (ALB), the main protein in plasma, has a very good binding capacity for water, fatty acids, calcium, sodium, bilirubin, hormones, potassium and drugs. The primary function of ALB is to regulate the colloidal osmotic pressure of blood. Albumin is synthesized in the liver as prealbumin, which has an N-terminal peptide that is removed before the nascent protein is released from the rough endoplasmic reticulum. The product, proalbumin, is in turn cleaved in the Golgi vesicles to produce the secreted form of albumin. Mutations in the ALB gene may result in familial dysalbuminemic hyperthyroxinemia (FDH), a form of euthyroid hyperthyroxinemia that is due to increased affinity of ALB for T4. FDH is the most common cause of inherited euthyroid hyperthyroxinemia in Caucasian populations.

References

Note: This product is for in vitro research use only