

HE4 Rabbit mAb

Catalog No: #49375

Package Size: #49375-1 50ul #49375-2 100ul

Orders: order@signalwayantibody.com

Support: tech@signalwayantibody.com

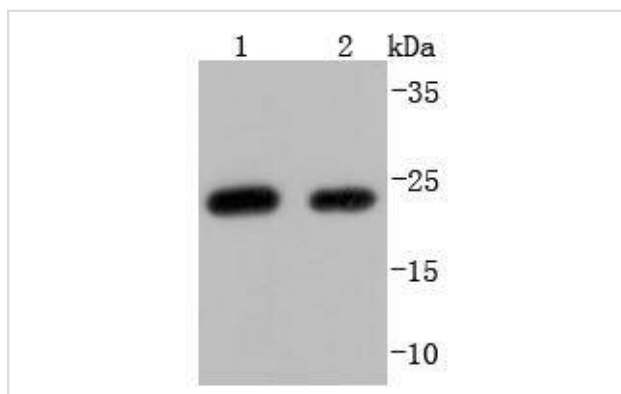
Description

Product Name	HE4 Rabbit mAb
Host Species	Recombinant Rabbit
Clonality	Monoclonal antibody
Clone No.	JF62-09
Purification	ProA affinity purified
Applications	WB, ICC/IF, IHC, IP, FC
Species Reactivity	Hu, Ms
Immunogen Description	recombinant protein
Other Names	dJ461P17.6 antibody EDDM4 antibody epididymal protein 4 antibody Epididymal secretory protein E4 antibody Epididymis specific whey acidic protein type four disulfide core antibody HE 4 antibody Major epididymis specific protein E4 antibody Major epididymis-specific protein E4 antibody MGC57529 antibody Putative protease inhibitor WAP5 antibody WAP 5 antibody WAP domain containing protein HE4 antibody WAP domain containing protein HE4 V4 antibody WAP four disulfide core domain 2 antibody WAP four disulfide core domain protein 2 antibody WAP four-disulfide core domain protein 2 antibody WAP5 antibody WFDC 2 antibody WFDC2 antibody WFDC2_HUMAN antibody
Accession No.	Swiss-Prot#:Q14508
Uniprot	Q14508
GeneID	10406;
Calculated MW	23 kDa
Formulation	1*TBS (pH7.4), 1%BSA, 40%Glycerol. Preservative: 0.05% Sodium Azide.
Storage	Store at -20°C

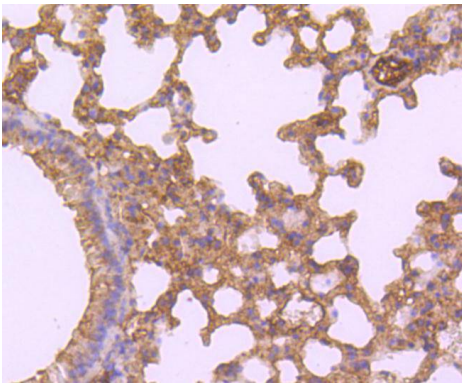
Application Details

WB: 1:1,000-1:2,000 IHC: 1:50-1:200 ICC: 1:50-1:200FC: 1:50-1:100

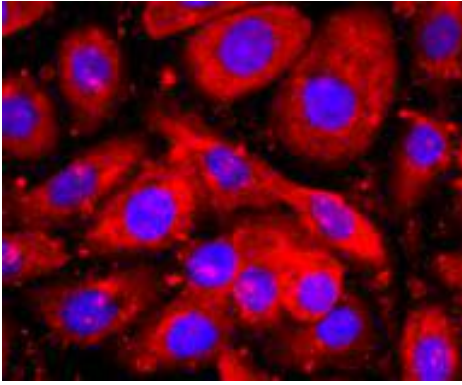
Images



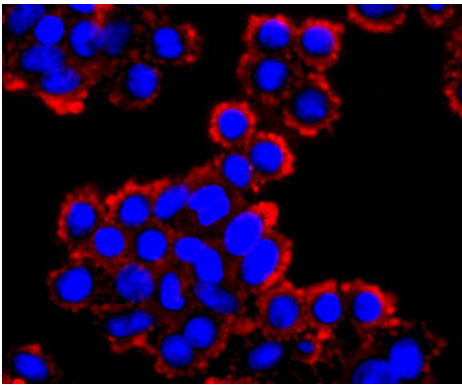
Western blot analysis of HE4 on different lysates using anti-HE4 antibody at 1/1,000 dilution. Positive control: Lane 1: SW480 Lane 2: SKOV-3



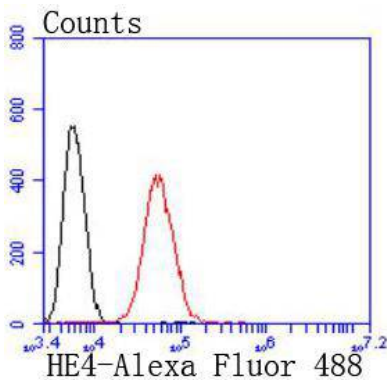
Immunohistochemical analysis of paraffin-embedded mouse lung tissue using anti-HE4 antibody. Counter stained with hematoxylin.



ICC staining HE4 in SKOV-3 cells (red). The nuclear counter stain is DAPI (blue). Cells were fixed in paraformaldehyde, permeabilised with 0.25% Triton X100/PBS.



ICC staining HE4 in SW480 cells (red). The nuclear counter stain is DAPI (blue). Cells were fixed in paraformaldehyde, permeabilised with 0.25% Triton X100/PBS.



Flow cytometric analysis of SW480 cells with HE4 antibody at 1/50 dilution (red) compared with an unlabelled control (cells without incubation with primary antibody; black). Alexa Fluor 488-conjugated goat anti rabbit IgG was used as the secondary antibody.

Background

HE4 (whey acidic protein (WAP)-type four-disulfide core-2, WFDC2) is a small secretory protein that may influence sperm maturation. HE4 gene expression is high in pulmonary epithelial cells and in some ovarian cancers. HE4 protein has a WAP motif that contains eight cysteines forming four disulfide bonds at the core of the protein. The WAP motif functions as a protease inhibitor in many of the family members that contain them.

References

Note: This product is for in vitro research use only