

DDR1 Polyclonal Antibody

Catalog No: #41546

Package Size: #41546-1 50ul #41546-2 100ul

Orders: order@signalwayantibody.comSupport: tech@signalwayantibody.com

Description

Product Name	DDR1 Polyclonal Antibody
Host Species	Rabbit
Clonality	Polyclonal
Purification	The antibody was affinity-purified from rabbit antiserum by affinity-chromatography using epitope-specific immunogen.
Applications	WB ELISA
Species Reactivity	Hu Ms Rt
Specificity	DDR1 Polyclonal Antibody detects endogenous levels of DDR1 protein.
Immunogen Type	peptide
Immunogen Description	Synthesized peptide derived from human DDR1 around the non-phosphorylation site of Y796.
Target Name	DDR1
Other Names	DDR1; CAK; EDDR1; NEP; NTRK4; PTK3A; RTK6; TRKE; Epithelial discoidin domain-containing receptor 1; Epithelial discoidin domain receptor 1; CD167 antigen-like family member A; Cell adhesion kinase; Discoidin receptor tyrosine kinase; HGK2;
Accession No.	Swiss-Prot: Q08345NCBI Gene ID: 780
Uniprot	Q08345
GeneID	780;
SDS-PAGE MW	100kd
Concentration	1mg/ml
Formulation	Liquid in PBS containing 50% glycerol, 0.5% BSA and 0.02% sodium azide.
Storage	Store at -20°C/1 year

Application Details

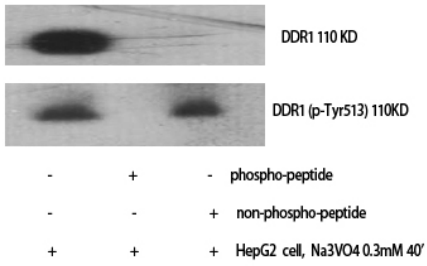
Western Blot: 1/500 - 1/2000.

ELISA: 1/10000.

Not yet tested in other applications.

Images

Western Blot analysis of HepG2+NA3VO4 cells using DDR1 Polyclonal Antibody



Note: This product is for in vitro research use only