

Neurofilament heavy polypeptide Rabbit mAb

Catalog No: #49386

Package Size: #49386-1 50ul #49386-2 100ul

Orders: order@signalwayantibody.com

Support: tech@signalwayantibody.com

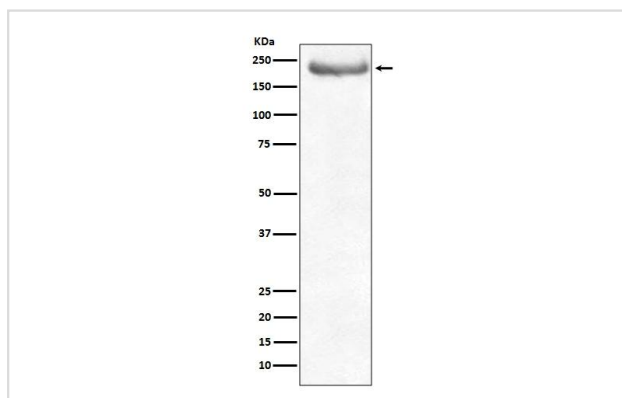
Description

Product Name	Neurofilament heavy polypeptide Rabbit mAb
Clone No.	JF99-07
Purification	Affinity-chromatography
Applications	WB, IHC
Species Reactivity	Hu, Ms, Rt
Immunogen Description	A synthesized peptide derived from human NEFH
Other Names	200 kDa neurofilament protein antibody CMT2CC antibody Nefn antibody Neurofilament heavy polypeptide 200kDa antibody Neurofilament heavy polypeptide antibody Neurofilament triplet H protein antibody NF H antibody NF-H antibody NFH antibody NFH_HUMAN antibody
Accession No.	Swiss-Prot#:P12036
Uniprot	P12036
GeneID	4744;
Calculated MW	200 kDa
Formulation	Rabbit IgG in phosphate buffered saline , pH 7.4, 150mM NaCl, 0.02% sodium azide and 50% glycerol.
Storage	Store at +4°C short term. Store at -20°C long term. Avoid freeze / thaw cycle.

Application Details

WB 1:500~1:2000 IHC 1:100~1:500

Images



Western blot analysis of NEFH expression in human brain lysate.

Background

Neurofilaments usually contain three intermediate filament proteins: L, M, and H which are involved in the maintenance of neuronal caliber. NF-H has an important function in mature axons that is not subserved by the two smaller NF proteins.

Note: This product is for in vitro research use only