

S100A9 Rabbit mAb

Catalog No: #49387

Package Size: #49387-1 50ul #49387-2 100ul

Orders: order@signalwayantibody.comSupport: tech@signalwayantibody.com

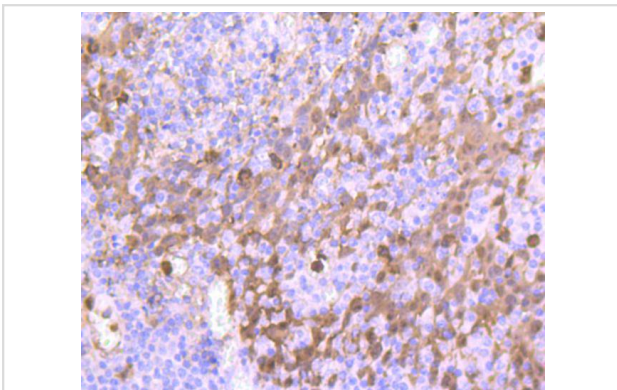
Description

Product Name	S100A9 Rabbit mAb
Host Species	Recombinant Rabbit
Clonality	Monoclonal antibody
Clone No.	JF096-8
Purification	ProA affinity purified
Applications	WB, ICC/IF, IHC
Species Reactivity	Hu
Immunogen Description	recombinant protein
Other Names	Leukocyte L1 complex heavy chain antibody 60B8AG antibody CAGB antibody Calgranulin B antibody Calgranulin-B antibody Calprotectin L1H subunit antibody CFAG antibody CGLB antibody Cystic fibrosis antigen B antibody L1AG antibody Leukocyte L1 complex heavy chain antibody LIAG antibody MAC387 antibody MIF antibody Migration inhibitory factor related protein 14 antibody Migration inhibitory factor-related protein 14 antibody MRP 14 antibody MRP-14 antibody MRP14 antibody Myeloid-related protein 14 antibody NIF antibody OTTHUMP0000015331 antibody p14 antibody Protein S100-A9 antibody S100 A9 antibody S100 calcium binding protein A9 antibody S100 calcium binding protein A9 calgranulin B antibody S100 calcium-binding protein A9 antibody S100A9 antibody S10A9_HUMAN antibody
Accession No.	Swiss-Prot#:P06702
Uniprot	P06702
GeneID	6280;
Calculated MW	14 kDa
Formulation	1*TBS (pH7.4), 1%BSA, 40%Glycerol. Preservative: 0.05% Sodium Azide.
Storage	Store at -20°C

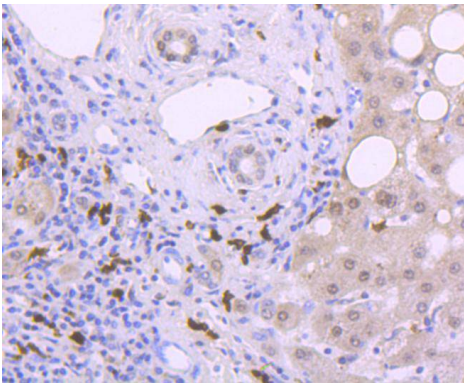
Application Details

WB: 1:1,000 IHC: 1:50-1:200 ICC: 1:50-1:200

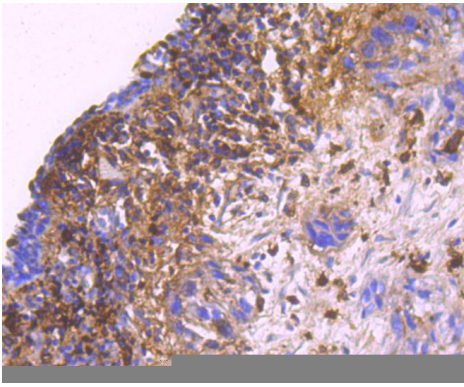
Images



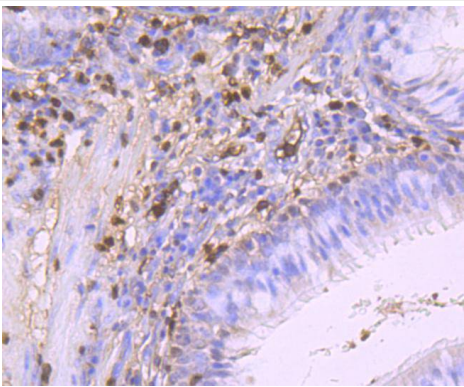
Immunohistochemical analysis of paraffin-embedded human tonsil tissue using anti-S100A9 antibody. Counter stained with hematoxylin.



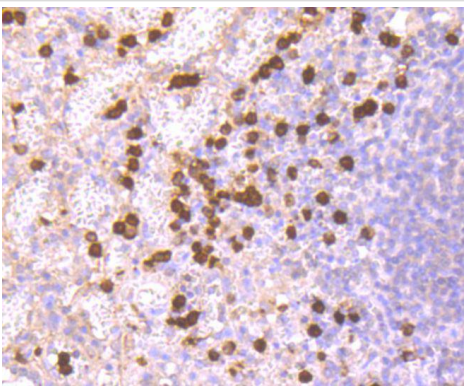
Immunohistochemical analysis of paraffin-embedded human liver cancer tissue using anti-S100A9 antibody. Counter stained with hematoxylin.



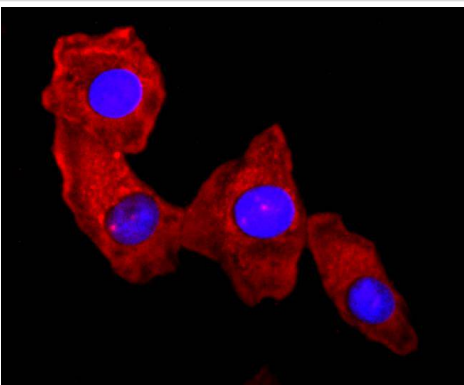
Immunohistochemical analysis of paraffin-embedded human breast carcinoma tissue using anti-S100A9 antibody. Counter stained with hematoxylin.



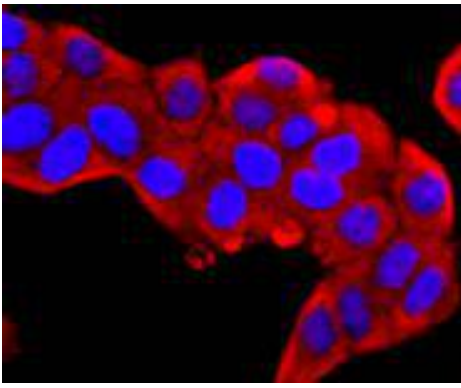
Immunohistochemical analysis of paraffin-embedded human lung cancer tissue using anti-S100A9 antibody. Counter stained with hematoxylin.



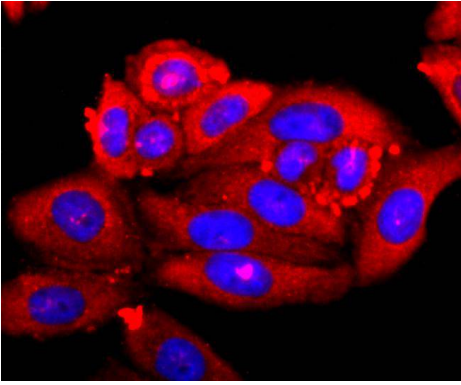
Immunohistochemical analysis of paraffin-embedded human spleen tissue using anti-S100A9 antibody. Counter stained with hematoxylin.



ICC staining S100A9 in A549 cells (red). The nuclear counter stain is DAPI (blue). Cells were fixed in paraformaldehyde, permeabilised with 0.25% Triton X100/PBS.



ICC staining S100A9 in HeLa cells (red). The nuclear counter stain is DAPI (blue). Cells were fixed in paraformaldehyde, permeabilised with 0.25% Triton X100/PBS.



ICC staining S100A9 in HepG2 cells (red). The nuclear counter stain is DAPI (blue). Cells were fixed in paraformaldehyde, permeabilised with 0.25% Triton X100/PBS.

Background

The family of EF-hand type Ca²⁺-binding proteins includes Calbindin (previously designated vitamin D-dependent Ca²⁺-binding protein), S-100 α and β , Calgranulin A (also designated MRP8), Calgranulin B (also designated MRP14) and Calgranulin C (S-100 like protein), and the parvalbumin family members, including parvalbumin α and parvalbumin β (also designated oncomodulin). Calbindin, S-100 proteins and parvalbumin proteins are each expressed in neural tissues. In addition, S-100 α and β are present in a variety of other tissues, and Calbindin is present in intestine and kidney. Parvalbumin α is also found in fast-contracting/relaxing skeletal muscle fibers and parvalbumin β is found in many tumor tissues as well as in the organ of Corti. Calbindin, S-100 proteins and parvalbumins have all been detected in leydig cells and testis. These proteins are thought to play a role in hormone production and spermatogenesis. Calgranulin is expressed in macrophages and epithelial cells.

References

Note: This product is for in vitro research use only