

Ctip2 Rabbit mAb

Catalog No: #49390

Package Size: #49390-1 50ul #49390-2 100ul

Orders: order@signalwayantibody.comSupport: tech@signalwayantibody.com

Description

Product Name	Ctip2 Rabbit mAb
Host Species	Recombinant Rabbit
Clonality	Monoclonal antibody
Clone No.	JF09-90
Purification	ProA affinity purified
Applications	WB, ICC, IHC, FC
Species Reactivity	Hu
Immunogen Description	recombinant protein
Other Names	ATL1 alpha antibody ATL1 antibody ATL1 beta antibody ATL1 gamma antibody ATL1-delta antibody B cell CLL/lymphoma 11B/T cell receptor delta constant region fusion protein antibody B cell lymphoma/leukemia 11B antibody B-cell CLL/lymphoma 11B (zinc finger protein) antibody B-cell CLL/lymphoma 11B antibody B-cell lymphoma/leukemia 11B antibody BC11B_HUMAN antibody BCL-11B antibody Bcl11b antibody BCL11B/TRDC fusion antibody COUP TF interacting protein 2 antibody COUP-TF interacting protein 2 antibody COUP-TF-interacting protein 2 antibody Ctip 2 antibody CTIP-2 antibody CTIP2 antibody hRIT1 alpha antibody hRit1 antibody Radiation induced tumor suppressor gene 1 antibody Radiation induced tumor suppressor gene 1 protein antibody Radiation-induced tumor suppressor gene 1 protein antibody Rit 1 antibody Rit1 antibody zinc finger protein hRit1 alpha antibody ZNF856B antibody
Accession No.	Swiss-Prot#:Q9C0K0
Uniprot	Q9C0K0
GeneID	64919;
Calculated MW	100/110kDa
Formulation	1*TBS (pH7.4), 1%BSA, 40%Glycerol. Preservative: 0.05% Sodium Azide.
Storage	Store at -20°C

Application Details

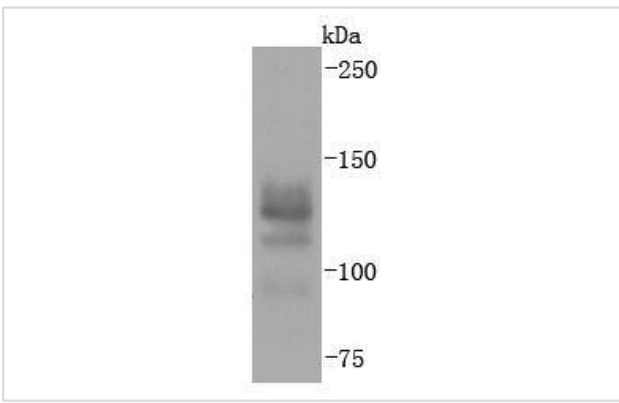
WB: 1:1,000

IHC: 1:50-1:200

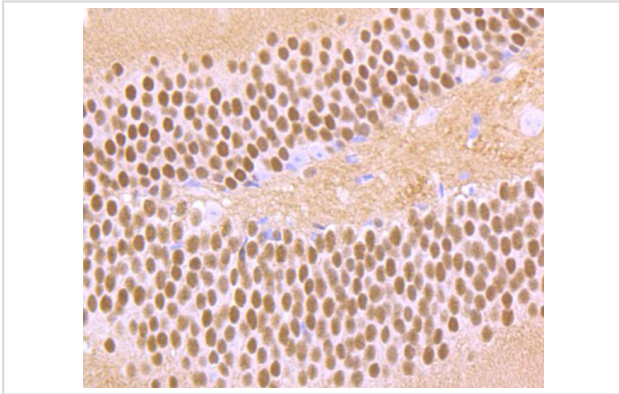
ICC: 1:50-1:200

FC: 1:50-1:100

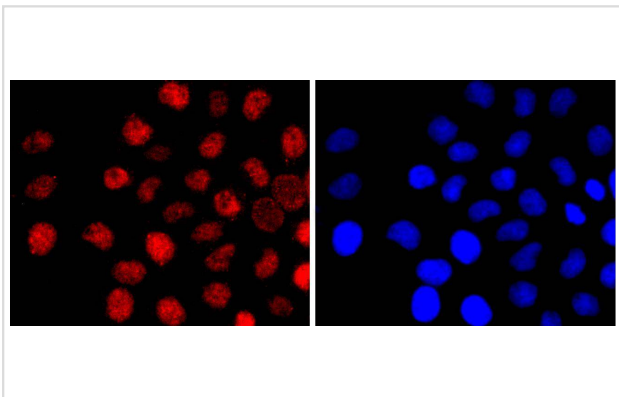
Images



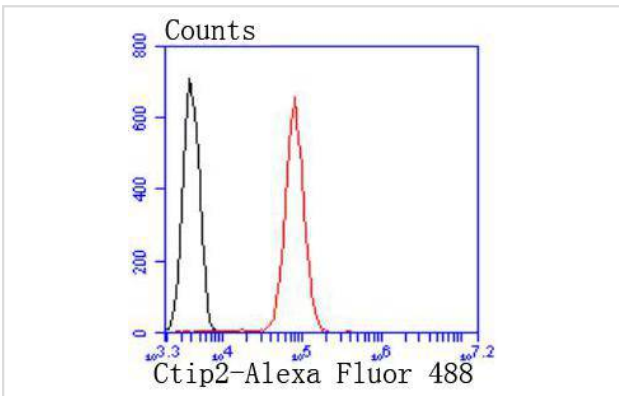
Western blot analysis of Ctip2 on THP-1 cells lysates using anti-Ctip2 antibody at 1/1,000 dilution.



Immunohistochemical analysis of paraffin-embedded mouse brain tissue using anti-Ctip2 antibody. Counter stained with hematoxylin.



ICC staining Ctip2 in LO2 cells (red). The nuclear counter stain is DAPI (blue). Cells were fixed in paraformaldehyde, permeabilised with 0.25% Triton X100/PBS.



Flow cytometric analysis of Jurkat cells with Ctip2 antibody at 1/50 dilution (red) compared with an unlabelled control (cells without incubation with primary antibody; black). Alexa Fluor 488-conjugated goat anti rabbit IgG was used as the secondary antibody

Background

Bcl-11a (CtIP-1, EVI9, B cell chronic lymphocytic leukemia (CLL)/lymphoma 11A) and Bcl-11b (CtIP-2, RIT1, B cell CLL/lymphoma 11B) genes play crucial roles in lymphopoiesis and influence the progression of hematopoietic malignancies. Disruption of the Bcl-11b locus is linked to T cell acute lymphoblastic leukemia, and the loss of heterozygosity in mice results in T cell lymphoma. Bcl-11 proteins are related C2H2 zinc-finger transcription factors that act as transcriptional repressors. Bcl-11b can interact with the metastasis-associated proteins MTA1 and MTA2 through the amino-terminal region. Bcl-11a is essential for postnatal development and normal lymphopoiesis. The Bcl-11a mouse gene is a common site of retroviral integration in myeloid leukemia, and may function as a leukemia disease gene, in part, through its interaction with Bcl-6.

References

Note: This product is for in vitro research use only