

## NEDD8 Rabbit mAb

Catalog No: #49398

Package Size: #49398-1 50ul #49398-2 100ul

Orders: [order@signalwayantibody.com](mailto:order@signalwayantibody.com)Support: [tech@signalwayantibody.com](mailto:tech@signalwayantibody.com)

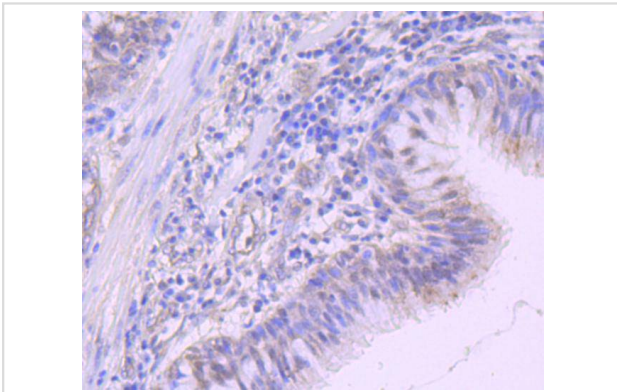
## Description

Product Name	NEDD8 Rabbit mAb
Host Species	Recombinant Rabbit
Clonality	Monoclonal antibody
Clone No.	JF69-09
Purification	ProA affinity purified
Applications	WB, ICC/IF, IHC, IP
Species Reactivity	Hu, Ms, Rt
Immunogen Description	recombinant protein
Other Names	FLJ43224 antibody MGC104393 antibody MGC125896 antibody MGC125897 antibody NED8 antibody NEDD8 antibody NEDD-8 antibody Nedd8 antibody NEDD8_HUMAN antibody Neddylin antibody Neural precursor cell expressed developmentally down regulated 8 antibody Neural precursor cell expressed developmentally down regulated gene 8 antibody Neural precursor cell expressed developmentally down-regulated protein 8 antibody Rub1 antibody Ubiquitin like protein Nedd 8 antibody Ubiquitin like protein Nedd8 antibody Ubiquitin-like protein Nedd8 antibody
Accession No.	Swiss-Prot#:Q15843
Uniprot	Q15843
GeneID	4738;
Calculated MW	9 kDa
Formulation	1*TBS (pH7.4), 1%BSA, 40%Glycerol. Preservative: 0.05% Sodium Azide.
Storage	Store at -20°C

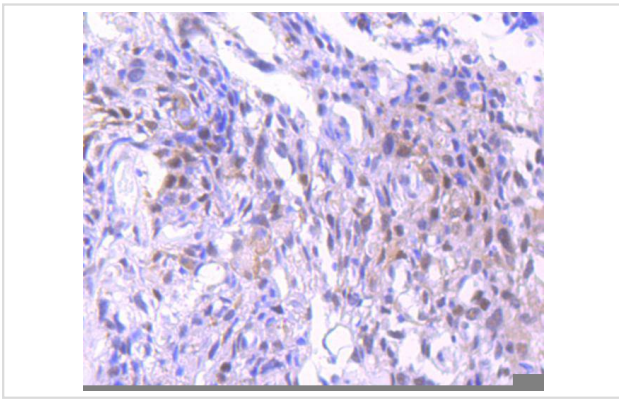
## Application Details

WB: 1:500-1:1000 IHC: 1:50-1:100 ICC: 1:50-1:200 IP: 1:50

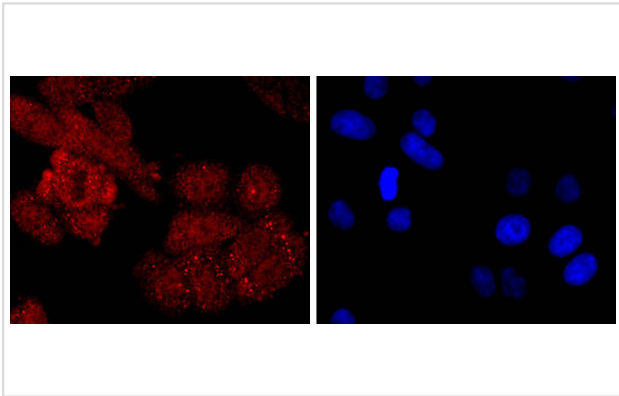
## Images



Immunohistochemical analysis of paraffin-embedded human lung cancer tissue using anti-NEDD8 antibody. Counter stained with hematoxylin.



Immunohistochemical analysis of paraffin-embedded human breast carcinoma tissue using anti-NEDD8 antibody. Counter stained with hematoxylin.



ICC staining NEDD8 in HepG2 cells (red). The nuclear counter stain is DAPI (blue). Cells were fixed in paraformaldehyde, permeabilised with 0.25% Triton X100/PBS.

## Background

NEDD8 is a ubiquitin (Ub)-like molecule that shares 80% homology with ubiquitin, a protein known to modify and target various proteins for proteolytic degradation. NEDD8 and the corresponding yeast homolog Rub1 are activated by the E1 ubiquitin activating enzyme UBA2, which forms isopeptide linkages between thio esters. Similar to the Ub-mediated proteolytic pathway, NEDD8 is covalently coupled to an E3 Ub ligase by the E2 conjugating enzyme, Ubc12. NEDD8 preferentially associates with the CUL-2 protein in the E3 ligase complex CBCVHL, which consists of cullin proteins associating with elongin B/C and the tumor suppressor F-box protein, von Hippel Lindau (VHL). NEDD8 is predominantly localized to the nucleus and is highly expressed in adult heart and skeletal muscle. In vitro studies indicate that NEDD8 tetramers are also able to bind to the 26S Proteasome, and that they assemble into complexes with conserved Ub-like moieties, suggesting that NEDD8 may regulate proteolysis of intracellular proteins similar to other Ub-mediated pathways.

## References

Note: This product is for in vitro research use only