

THY1 Rabbit mAb

Catalog No: #49406

Package Size: #49406-1 50ul #49406-2 100ul

Orders: order@signalwayantibody.com

Support: tech@signalwayantibody.com

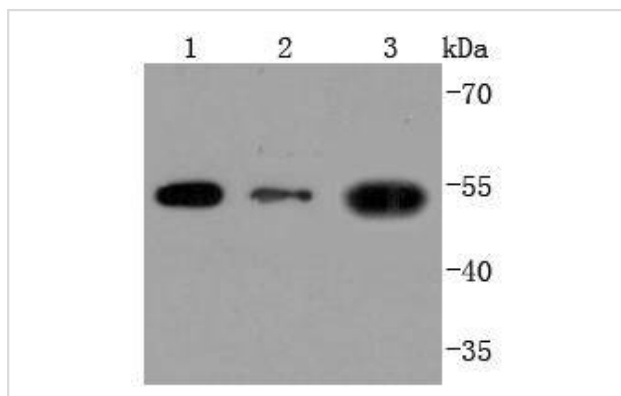
Description

Product Name	THY1 Rabbit mAb
Host Species	Recombinant Rabbit
Clonality	Monoclonal antibody
Clone No.	JF10-09
Purification	ProA affinity purified
Applications	WB, ICC/IF, IHC
Species Reactivity	Hu
Immunogen Description	recombinant protein
Other Names	CD7 antibody CD90 antibody CD90 antigen antibody CDw90 antibody FLJ33325 antibody MGC128895 antibody T25 antibody Theta antigen antibody Thy 1 antibody Thy 1 cell surface antigen antibody Thy 1 membrane glycoprotein antibody Thy 1 T cell antigen antibody Thy 1.2 antibody Thy-1 antigen antibody Thy-1 membrane glycoprotein antibody Thy1 antibody Thy1 antigen antibody Thy1 T cell antigen antibody Thy1.1 antibody Thy1.2 antibody THY1_HUMAN antibody Thymus cell antigen 1, theta antibody
Accession No.	Swiss-Prot#:P04216
Uniprot	P04216
GeneID	7070;
Calculated MW	45 kDa
Formulation	1*TBS (pH7.4), 1%BSA, 40%Glycerol. Preservative: 0.05% Sodium Azide.
Storage	Store at -20°C

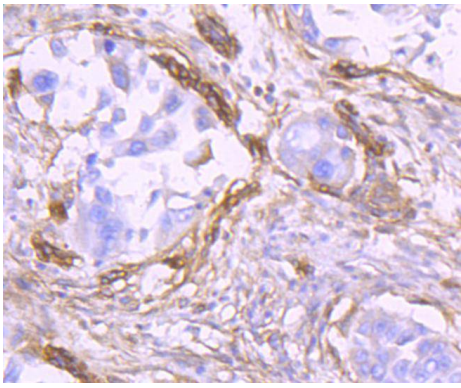
Application Details

WB: 1:1,000-5,000 IHC: 1:50-1:200 ICC: 1:50-1:200

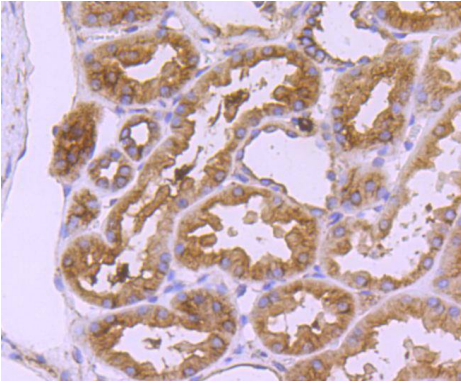
Images



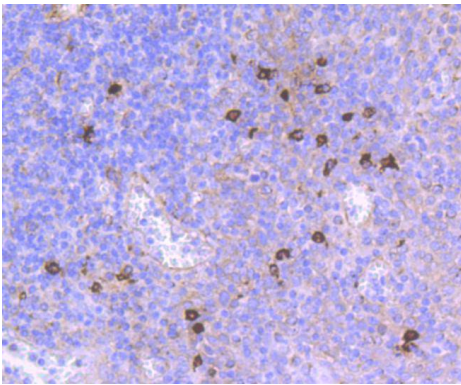
Western blot analysis of THY1 on different lysates using anti-THY1 antibody at 1/1,000 dilution. Positive control: Lane 1: Hela Lane 2: HepG2 Lane 3: HUVEC



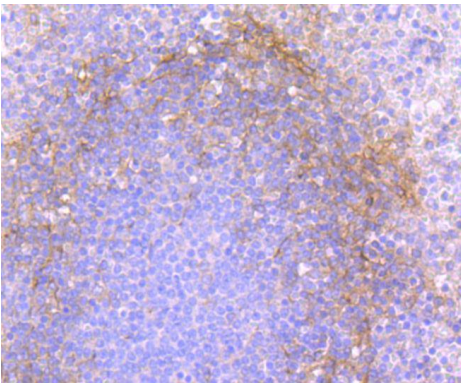
Immunohistochemical analysis of paraffin-embedded human lung cancer tissue using anti-THY1 antibody. Counter stained with hematoxylin.



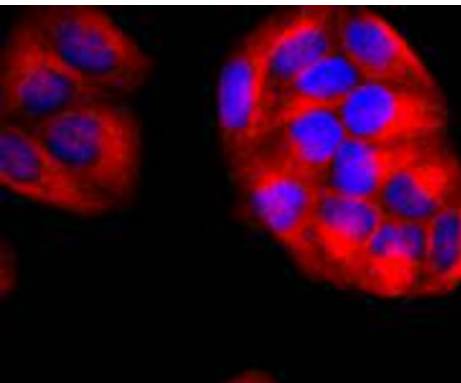
Immunohistochemical analysis of paraffin-embedded human kidney tissue using anti-THY1 antibody. Counter stained with hematoxylin.



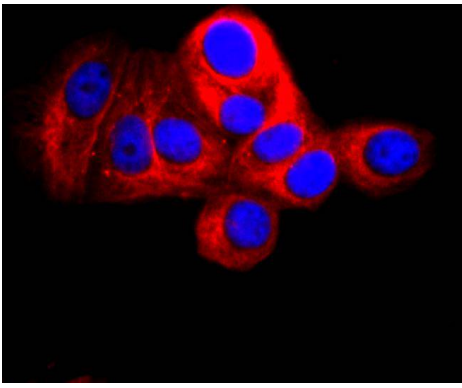
Immunohistochemical analysis of paraffin-embedded human tonsil tissue using anti-THY1 antibody. Counter stained with hematoxylin.



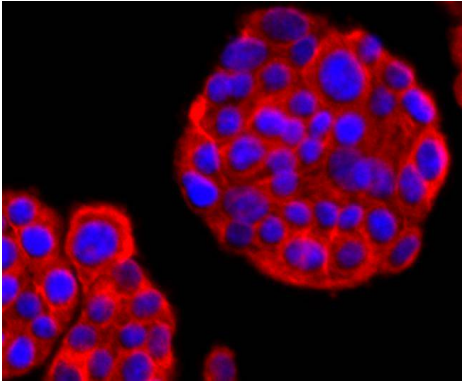
Immunohistochemical analysis of paraffin-embedded human spleen tissue using anti-THY1 antibody. Counter stained with hematoxylin.



ICC staining THY1 in Hela cells (red). The nuclear counter stain is DAPI (blue). Cells were fixed in paraformaldehyde, permeabilised with 0.25% Triton X100/PBS.



ICC staining THY1 in MCF-7 cells (red). The nuclear counter stain is DAPI (blue). Cells were fixed in paraformaldehyde, permeabilised with 0.25% Triton X100/PBS.



ICC staining THY1 in PC-12 cells (red). The nuclear counter stain is DAPI (blue). Cells were fixed in paraformaldehyde, permeabilised with 0.25% Triton X100/PBS.

Background

Over 100 cell surface markers have been identified through the use of monoclonal antibodies. Many of these markers have proven useful in identifying specific subpopulations of cells within mixed colonies. Accordingly, these molecules have been assigned a "cluster of differentiation" (CD) designation. One such marker, designated Thy-1 (also referred to as CDw90), is a phosphatidyl-anchored cell surface glycoprotein which, when coexpressed with CD34 on cells from normal human bone marrow, identifies a subpopulation that includes putative hematopoietic, pluripotent stem cells. Thy-1+ cells from bone marrow have been implicated in syngeneic graft versus host disease and may serve to regulate autoreactivity after bone marrow transplant.

References

Note: This product is for in vitro research use only