

α -SMA Polyclonal Antibody

Catalog No: #41550

Package Size: #41550-1 50ul #41550-2 100ul

Orders: order@signalwayantibody.comSupport: tech@signalwayantibody.com

Description

Product Name	α -SMA Polyclonal Antibody
Host Species	Rabbit
Clonality	Polyclonal
Purification	The antibody was affinity-purified from rabbit antiserum by affinity-chromatography using epitope-specific immunogen.
Applications	WB IHC ELISA IF
Species Reactivity	Hu Ms Rt
Specificity	α -SMA Polyclonal Antibody detects endogenous levels of α -SMA protein.
Immunogen Description	Synthesized peptide derived from the N-terminal region of human α -SMA.
Target Name	α -SMA
Other Names	ACTA2; ACTSA; ACTVS; GIG46; Actin; aortic smooth muscle; Alpha-actin-2; Cell growth-inhibiting gene 46 protein
Accession No.	Swiss-Prot: P62736NCBI Gene ID: 59
Uniprot	P62736
GeneID	59;
SDS-PAGE MW	42kd
Concentration	1mg/ml
Formulation	Liquid in PBS containing 50% glycerol, 0.5% BSA and 0.02% sodium azide.
Storage	Store at -20°C/1 year

Application Details

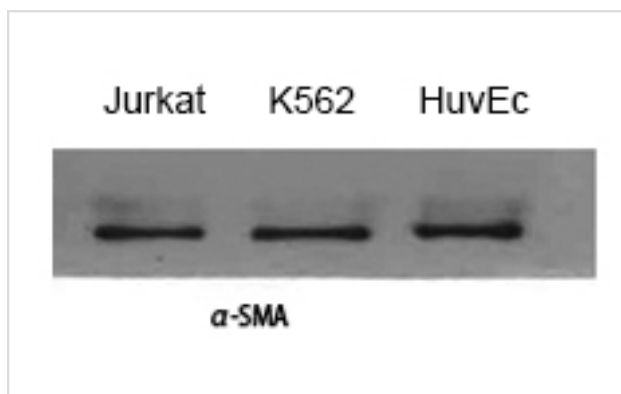
Western Blot: 1/500 - 1/2000.

Immunohistochemistry: 1/100 - 1/300.

ELISA: 1/20000.

Not yet tested in other applications.

Images



Western Blot analysis of Jurkat K562 HuvEc cells using α -SMA Polyclonal Antibody

Note: This product is for in vitro research use only