

HA-Tag(HRP conjugated) Rabbit mAb

Catalog No: #49425

Package Size: #49425-1 50ul #49425-2 100ul

Orders: order@signalwayantibody.com

Support: tech@signalwayantibody.com

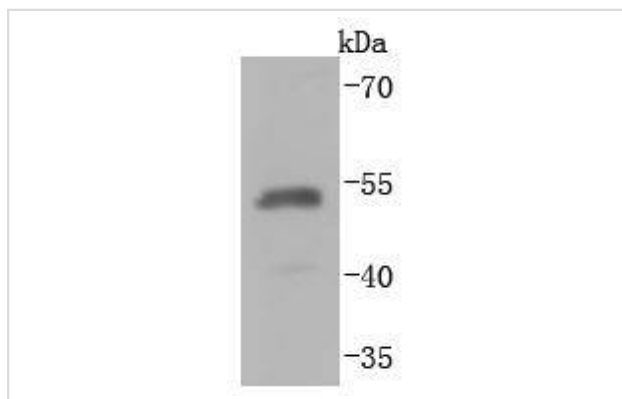
Description

Product Name	HA-Tag(HRP conjugated) Rabbit mAb
Host Species	Recombinant Rabbit
Clonality	Monoclonal antibody
Clone No.	JM10-56
Purification	ProA affinity purified
Applications	WB
Immunogen Description	recombinant protein
Conjugates	HRP conjugated
Other Names	HA epitope tag antibody HA1 antibody HA2 antibody hemagglutinin antibody Hemagglutinin HA1 chain antibody Hemagglutinin HA2 chain antibody
Accession No.	Swiss-Prot#:
Formulation	1*TBS (pH7.4), 1%BSA, 40%Glycerol. Preservative: 0.05% Sodium Azide.
Storage	Store at -20°C

Application Details

WB: 1:5,000-1:10,000

Images



Western blot analysis of HA-tag on HA-tag recombinant protein lysates using anti-HA-tag antibody at 1/10,000 dilution.

Background

Human influenza hemagglutinin (HA) is a surface glycoprotein required for the infectivity of the human virus. The HA tag is derived from the HA molecule corresponding to amino acids 98-106. This antibody is used to detect proteins that are tagged with HA epitope (YPYDVPDYA) and are expressed in prokaryotic and eukaryotic cells.

References

Note: This product is for in vitro research use only