

## Laminin beta 1 Rabbit mAb

Catalog No: #49427

Package Size: #49427-1 50ul #49427-2 100ul

Orders: order@signalwayantibody.com

Support: tech@signalwayantibody.com

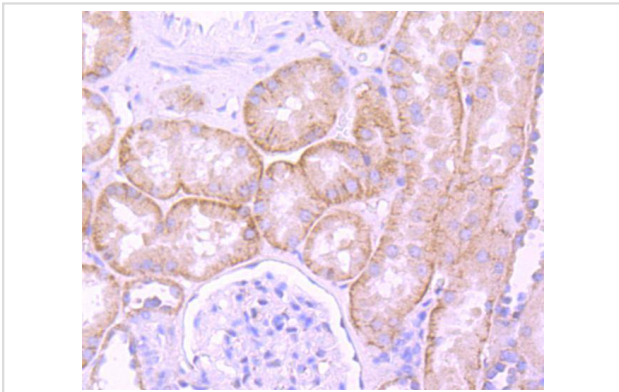
## Description

Product Name	Laminin beta 1 Rabbit mAb
Host Species	Recombinant Rabbit
Clonality	Monoclonal antibody
Clone No.	JM099-03
Purification	ProA affinity purified
Applications	WB, IHC, FC
Species Reactivity	Hu, Ms, Rt
Immunogen Description	recombinant protein
Other Names	CLM antibody Cutis laxa with marfanoid phenotype antibody LAM B1 antibody LAMB 1 antibody LAMB1 antibody LAMB1_HUMAN antibody Laminin B1 antibody Laminin B1 chain antibody Laminin beta 1 chain antibody Laminin beta 1 chain precursor antibody Laminin beta1 antibody Laminin subunit beta 1 antibody Laminin subunit beta-1 antibody Laminin-1 subunit beta antibody Laminin-10 subunit beta antibody Laminin-12 subunit beta antibody Laminin-2 subunit beta antibody Laminin-6 subunit beta antibody Laminin-8 subunit beta antibody LIS5 antibody MGC142015 antibody
Accession No.	Swiss-Prot#:P07942
Uniprot	P07942
GenelD	3912;
Calculated MW	198 kDa
Formulation	1*TBS (pH7.4), 1%BSA, 40%Glycerol. Preservative: 0.05% Sodium Azide.
Storage	Store at -20°C

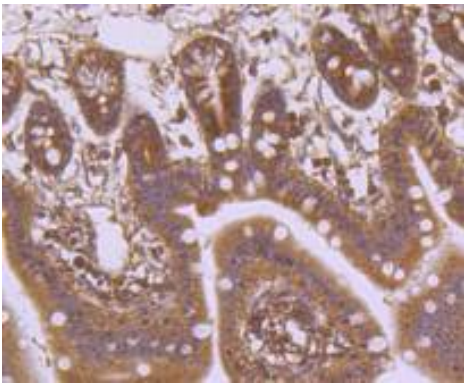
## Application Details

WB: 1:1,000IHC: 1:100-1:500FC: 1:50-1:100

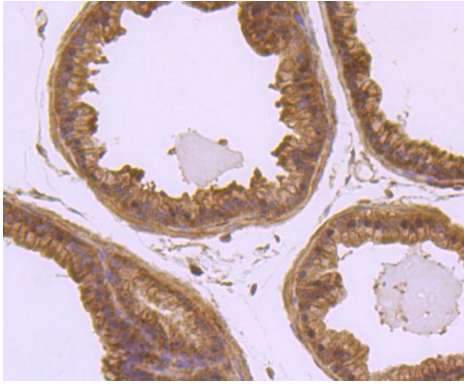
## Images



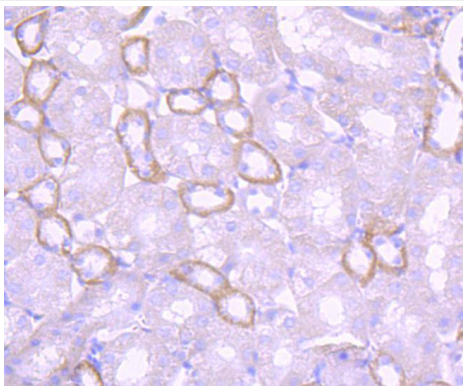
Immunohistochemical analysis of paraffin-embedded human kidney tissue using anti-Laminin beta 1 antibody. Counter stained with hematoxylin.



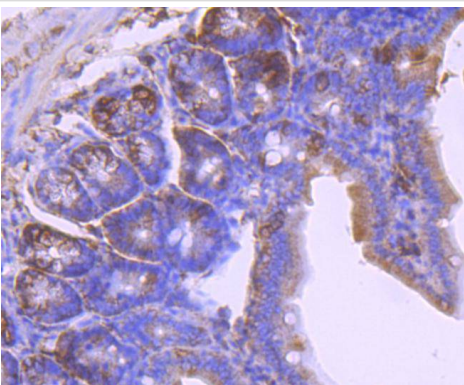
Immunohistochemical analysis of paraffin-embedded mouse colon tissue using anti-Laminin beta 1 antibody. Counter stained with hematoxylin.



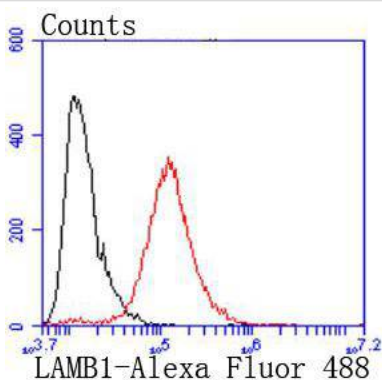
Immunohistochemical analysis of paraffin-embedded mouse prostate tissue using anti-Laminin beta 1 antibody. Counter stained with hematoxylin.



Immunohistochemical analysis of paraffin-embedded mouse kidney tissue using anti-Laminin beta 1 antibody. Counter stained with hematoxylin.



Immunohistochemical analysis of paraffin-embedded mouse small intestine tissue using anti-Laminin beta 1 antibody. Counter stained with hematoxylin.



Flow cytometric analysis of A431 cells with Laminin beta 1 antibody at 1/50 dilution (red) compared with an unlabelled control (cells without incubation with primary antibody; black). Alexa Fluor 488-conjugated goat anti rabbit IgG was used as the

## Background

---

Laminins are essential and abundant structural non-collagenous glyco- proteins localizing to basement membranes. Basement membranes (cell-associated extracellular matrices (ECMs)) are polymers of laminins with stabilizing type IV collagen networks, nidogen, and several proteoglycans. Basement membranes are found under epithelial layers, around the endothelium of blood vessels, and surrounding muscle, peripheral nerve, and fat cells. Formation of basement membranes influences cell proliferation, phenotype, migration, gene expression, and tissue architecture. Each laminin is a heterotrimer of  $\alpha$ ,  $\beta$ , and  $\gamma$  chain subunits that undergoes cell-secretion and incorporation into the ECM. Laminins can self-assemble, bind to other matrix macromolecules, and have unique and shared cell interactions mediated by integrins, dystroglycan, and cognate laminin receptors. The human Laminin  $\beta$ -1 gene maps to chromosome 7q22 and is ubiquitously expressed in tissues that produce basement membranes.

## References

---

---

Note: This product is for in vitro research use only