

Parvalbumin Rabbit mAb

Catalog No: #49428

Package Size: #49428-1 50ul #49428-2 100ul

Orders: order@signalwayantibody.comSupport: tech@signalwayantibody.com

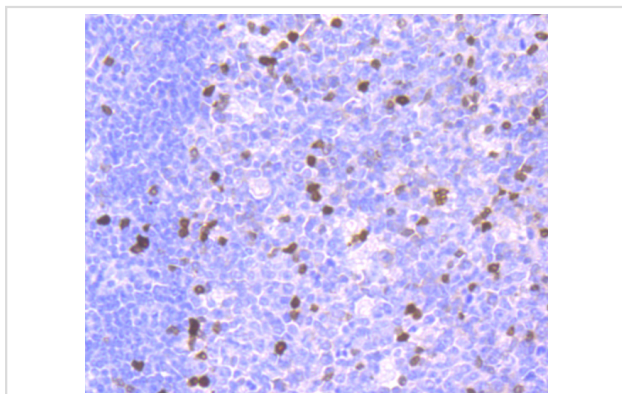
Description

Product Name	Parvalbumin Rabbit mAb
Host Species	Recombinant Rabbit
Clonality	Monoclonal antibody
Clone No.	JM100-08
Purification	ProA affinity purified
Applications	WB, IHC, IP
Species Reactivity	Hu
Immunogen Description	recombinant protein
Other Names	D22S749 antibody MGC116759 antibody Parvalbumin alpha antibody PRVA_HUMAN antibody PVALB antibody
Accession No.	Swiss-Prot#:P20472
Uniprot	P20472
GeneID	5816;
Calculated MW	12 kDa
Formulation	1*TBS (pH7.4), 1%BSA, 40%Glycerol. Preservative: 0.05% Sodium Azide.
Storage	Store at -20°C

Application Details

WB: 1:500-1:1000 IHC: 1:50-1:200

Images



Immunohistochemical analysis of paraffin-embedded human tonsil tissue using anti-Parvalbumin antibody. Counter stained with hematoxylin.

Background

Parvalbumin (PV) is a calcium binding protein expressed in specific muscle fibers and fast-firing neurons. PV consists of a single, unbranched chain of linked amino acids and belongs to a larger group of EF hand proteins. Studies have demonstrated that parvalbumin acts in the decay of calcium in the contraction/ relaxation cycle of fast twitch muscles. This data has shown a positive correlation between the rate of relaxation and the concentration of

parvalbumin. Parvalbumin is also expressed in a specific population of GABAergic interneurons which are thought to play a role in maintaining the balance between excitation and inhibition in the cortex as well as the hippocampus. In amyotrophic lateral sclerosis (ALS) patients, parvalbumin immunoreactivity is specifically absent from neuron populations lost early in ALS.

References

Note: This product is for in vitro research use only