

NG2 Rabbit mAb

Catalog No: #49429

Package Size: #49429-1 50ul #49429-2 100ul

Orders: order@signalwayantibody.comSupport: tech@signalwayantibody.com

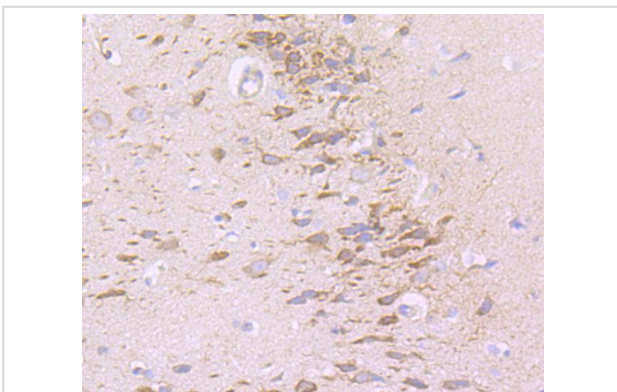
Description

Product Name	NG2 Rabbit mAb
Host Species	Recombinant Rabbit
Clonality	Monoclonal antibody
Clone No.	JM10-13
Purification	ProA affinity purified
Applications	WB, IHC, FC
Species Reactivity	Hu
Immunogen Description	recombinant protein
Other Names	4732461B14Rik antibody AN2 antibody AN2 proteoglycan antibody Chondroitin sulfate proteoglycan 4 (melanoma-associated) antibody Chondroitin sulfate proteoglycan 4 antibody Chondroitin sulfate proteoglycan NG2 antibody Cspg4 antibody Cspg4 chondroitin sulfate proteoglycan 4 antibody CSPG4_HUMAN antibody HMW-MAA antibody HSN tumor-specific antigen antibody Kiaa4232 antibody MCSP antibody MCSPG antibody MEL-CSPG antibody Melanoma chondroitin sulfate proteoglycan antibody Melanoma-associated chondroitin sulfate proteoglycan antibody MELCSPG antibody MSK16 antibody NG2 antibody
Accession No.	Swiss-Prot#:Q6UVK1
Uniprot	Q6UVK1
GeneID	1464;
Calculated MW	251 kDa
Formulation	1*TBS (pH7.4), 1%BSA, 40%Glycerol. Preservative: 0.05% Sodium Azide.
Storage	Store at -20°C

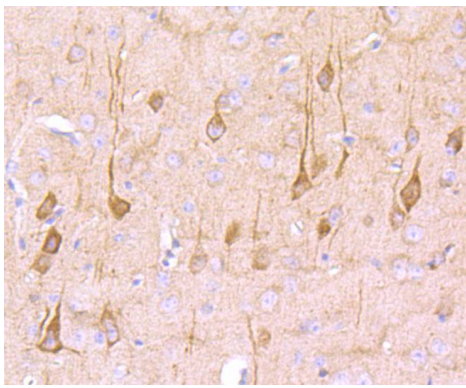
Application Details

WB: 1:500-1:1,000 IHC: 1:50-1:200FC: 1:50-1:100

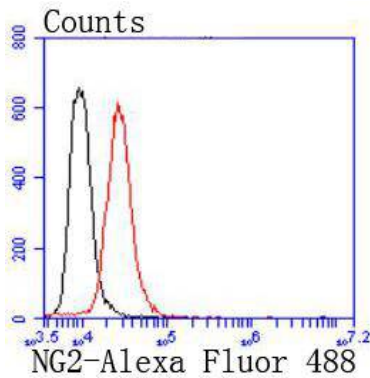
Images



Immunohistochemical analysis of paraffin-embedded rat brain tissue using anti-NG2 antibody. Counter stained with hematoxylin.



Immunohistochemical analysis of paraffin-embedded mouse brain tissue using anti-NG2 antibody. Counter stained with hematoxylin.



Flow cytometric analysis of SHG-44 cells with NG2 antibody at 1/50 dilution (red) compared with an unlabelled control (cells without incubation with primary antibody; black). Alexa Fluor 488-conjugated goat anti rabbit IgG was used as the secondary antibody.

Background

NG2 (also known as melanoma-associated chondroitin sulfate proteoglycan 4, MCSP, MCSPG, MSK16 and MEL-CSPG) stabilizes cell-substratum interactions during early events of melanoma cell spreading on endothelial basement membranes. NG2 may facilitate primary melanoma progression by enhancing the activation of key signaling pathways important for tumor invasion and growth. Threonine 2256 phosphorylation of rat NG2 (Threonine 2252 phosphorylation of human NG2) leads to redistribution of NG2 on the surface of astrocytomas, polarization of the cell and a significant increase in cell motility. NG2 acts as a co-receptor for spreading and focal contact formation in association with $\alpha 4 \beta 1$ integrin in malignant melanoma cells. NG2 is present on blood vessels throughout the rat embryo. Microvessels within the rat CNS express NG2 on endothelial cells, and outside the CNS, NG2 is present on smooth muscle cells. NG2 is a novel marker for epidermal stem cells that contributes to their patterned distribution by promoting stem cell clustering.

References

Note: This product is for in vitro research use only