

PGP9.5 Rabbit mAb

Catalog No: #49435

Package Size: #49435-1 50ul #49435-2 100ul

Orders: order@signalwayantibody.comSupport: tech@signalwayantibody.com

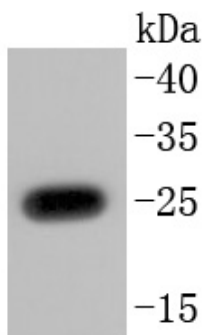
Description

| | |
|-----------------------|--|
| Product Name | PGP9.5 Rabbit mAb |
| Host Species | Recombinant Rabbit |
| Clonality | Monoclonal antibody |
| Clone No. | JM10-59 |
| Purification | ProA affinity purified |
| Applications | WB, ICC/IF, IHC, IP |
| Species Reactivity | Hu, Ms, Rt |
| Immunogen Description | recombinant protein |
| Other Names | Epididymis luminal protein 117 antibody Epididymis secretory protein Li 53 antibody HEL 117 antibody HEL S 53 antibody NDGOA antibody Neuron cytoplasmic protein 9.5 antibody OTTHUMP00000218137 antibody OTTHUMP00000218139 antibody OTTHUMP00000218140 antibody OTTHUMP00000218141 antibody Park 5 antibody PARK5 antibody PGP 9.5 antibody PGP9.5 antibody PGP95 antibody Protein gene product 9.5 antibody Ubiquitin C terminal esterase L1 antibody Ubiquitin C terminal hydrolase antibody Ubiquitin C terminal hydrolase L1 antibody Ubiquitin carboxyl terminal esterase L1 antibody Ubiquitin carboxyl terminal hydrolase isozyme L1 antibody Ubiquitin carboxyl-terminal hydrolase isozyme L1 antibody Ubiquitin thioesterase L1 antibody Ubiquitin thioesterase antibody Ubiquitin thioesterase L1 antibody UCH-L1 antibody UCHL1 antibody UCHL1_HUMAN antibody |
| Accession No. | Swiss-Prot#:P09936 |
| Uniprot | P09936 |
| GeneID | 7345; |
| Calculated MW | 25 kDa |
| Formulation | 1*TBS (pH7.4), 1%BSA, 40%Glycerol. Preservative: 0.05% Sodium Azide. |
| Storage | Store at -20°C |

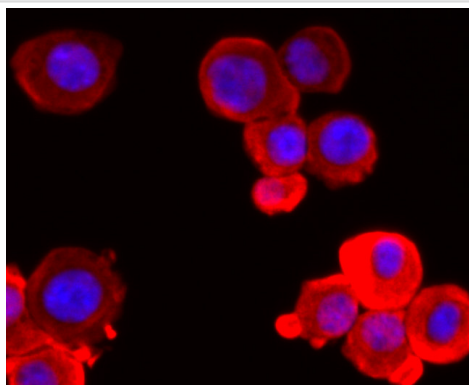
Application Details

WB: 1:500-1:1,000 IHC: 1:50-1:200 ICC: 1:100-1:500IP: 1:50-1:100

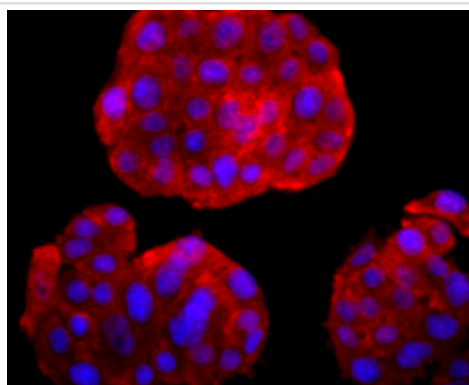
Images



Western blot analysis of PGP9.5 on A549 cell lysates using anti-PGP9.5 antibody at 1/1,000 dilution.



ICC staining PGP9.5 in N2A cells (red). The nuclear counter stain is DAPI (blue). Cells were fixed in paraformaldehyde, permeabilised with 0.25% Triton X100/PBS.



ICC staining PGP9.5 in PC-12 cells (red). The nuclear counter stain is DAPI (blue). Cells were fixed in paraformaldehyde, permeabilised with 0.25% Triton X100/PBS.

Background

UCH-L1 (ubiquitin C-terminal hydrolase) is a member of a gene family whose products hydrolyze small C-terminal adducts of ubiquitin to generate the ubiquitin monomer. Expression of UCH-L1 is highly specific to neurons and to cells of the diffuse neuroendocrine system and their tumors. UCH-L1 is expressed in brain neurons. Examination of specific brain regions reveals expression in all areas tested, particularly in the substantia nigra. UCH-L1 represents 1-2% of total soluble brain protein. Its occurrence in Lewy bodies and its function in the proteasome pathway make it a compelling candidate gene in Parkinson disease. The gene which encodes UCH-L1 maps to human chromosome 4p13. The 230 amino acid human UCH-L3 protein is 54% identical to that of UCH-L1. UCH-L3 is the predominant thiol protease and has high-affinity binding sites for ubiquitin.

References

Note: This product is for in vitro research use only