

ATPB Rabbit mAb

Catalog No: #49442

Package Size: #49442-1 50ul #49442-2 100ul

Orders: order@signalwayantibody.com

Support: tech@signalwayantibody.com

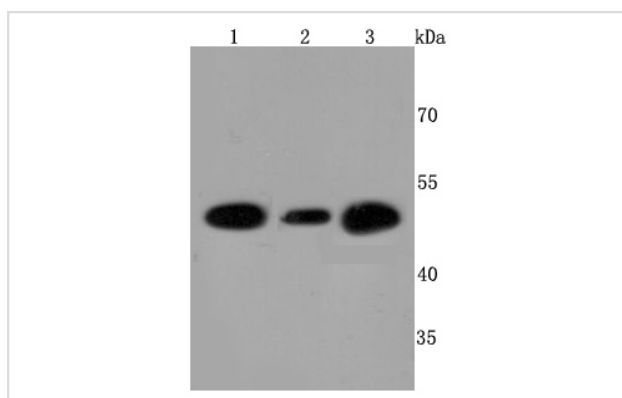
Description

Product Name	ATPB Rabbit mAb
Host Species	Recombinant Rabbit
Clonality	Monoclonal antibody
Clone No.	JM10-90
Purification	ProA affinity purified
Applications	WB, IP, ICC/IF, IHC
Species Reactivity	Hu, Ms, Rt, Zebrafish
Immunogen Description	recombinant protein
Other Names	ATP 5B antibody ATP synthase H ⁺ transporting mitochondrial F1 complex beta polypeptide antibody ATP synthase subunit beta mitochondrial antibody ATP synthase subunit beta, mitochondrial antibody atp5b antibody ATPB antibody ATPB_HUMAN antibody ATPMB antibody ATPSB antibody Epididymis secretory protein Li 271 antibody HEL-S-271 antibody Mitochondrial ATP synthase beta subunit antibody Mitochondrial ATP Synthase Subunit Beta antibody Mitochondrial ATP synthetase beta subunit antibody
Accession No.	Swiss-Prot#:P06576
Uniprot	P06576
GeneID	506;
Calculated MW	53 kDa
Formulation	1*TBS (pH7.4), 1%BSA, 40%Glycerol. Preservative: 0.05% Sodium Azide.
Storage	Store at -20°C

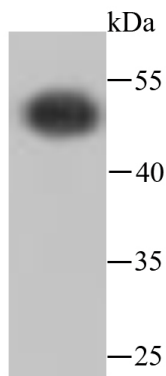
Application Details

WB: 1:1,000-5,000 IHC: 1:50-1:200 ICC: 1:100-1:500 IP: 1:10-1:50

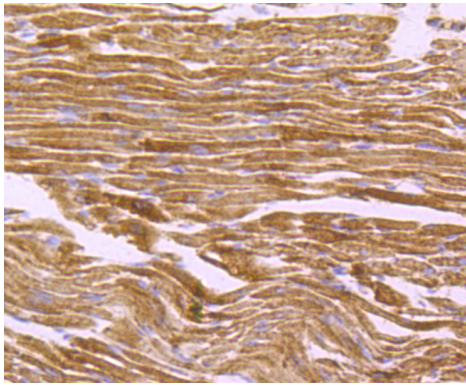
Images



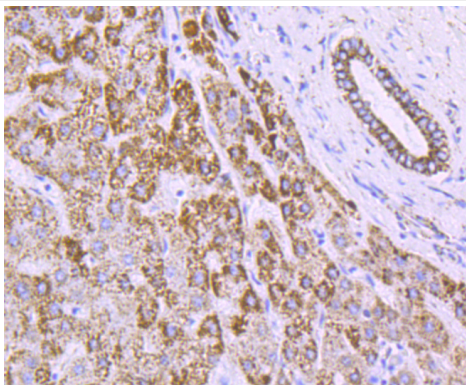
Western blot analysis of ATPB on different cells lysates using anti-ATPB antibody at 1/500 dilution. Positive control: Line1: Hela Line2: HepG2 Line3: 293T



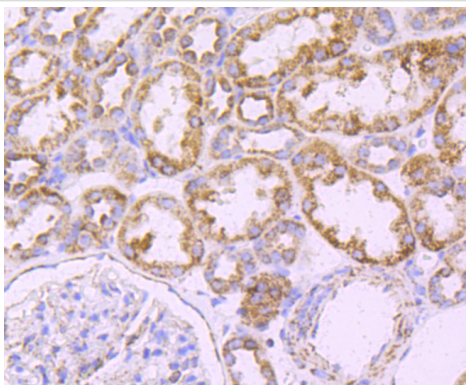
Western blot analysis of ATPB on Zebrafish cells lysates using anti-ATPB antibody at 1/500 dilution.



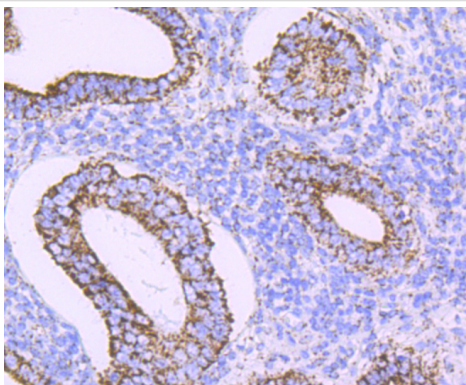
Immunohistochemical analysis of paraffin-embedded mouse heart tissue using anti-ATPB antibody. Counter stained with hematoxylin.



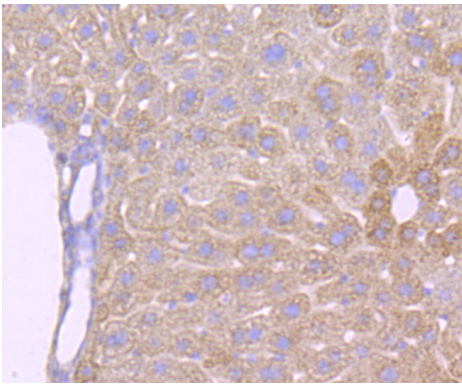
Immunohistochemical analysis of paraffin-embedded human liver tissue using anti-ATPB antibody. Counter stained with hematoxylin.



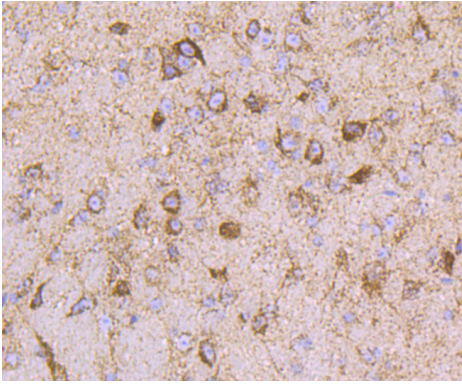
Immunohistochemical analysis of paraffin-embedded human kidney tissue using anti-ATPB antibody. Counter stained with hematoxylin.



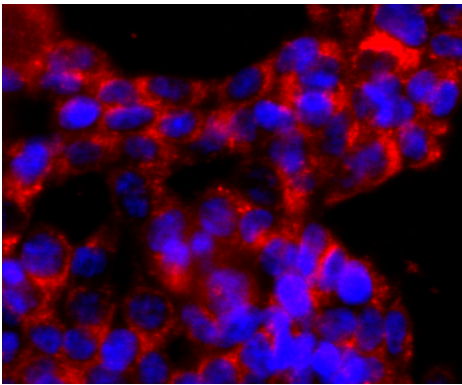
Immunohistochemical analysis of paraffin-embedded human uterus tissue using anti-ATPB antibody. Counter stained with hematoxylin.



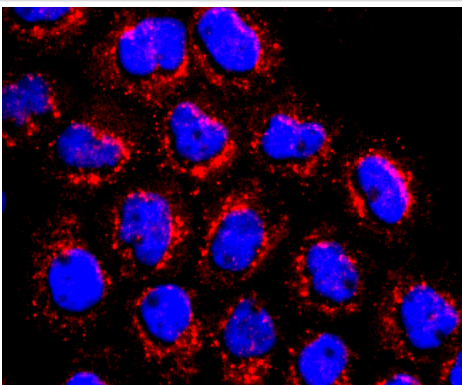
Immunohistochemical analysis of paraffin-embedded mouse liver tissue using anti-ATPB antibody. Counter stained with hematoxylin.



Immunohistochemical analysis of paraffin-embedded mouse brain tissue using anti-ATPB antibody. Counter stained with hematoxylin.



ICC staining ATPB in 293T cells (red). The nuclear counter stain is DAPI (blue). Cells were fixed in paraformaldehyde, permeabilised with 0.25% Triton X100/PBS.



ICC staining ATPB in A431 cells (red). The nuclear counter stain is DAPI (blue). Cells were fixed in paraformaldehyde, permeabilised with 0.25% Triton X100/PBS.

Background

Mitochondrial membrane ATP synthase (F(1)F(0) ATP synthase or Complex V) produces ATP from ADP in the presence of a proton gradient across the membrane which is generated by electron transport complexes of the respiratory chain. F-type ATPases consist of two structural domains, F(1) - containing the extramembraneous catalytic core, and F(0) - containing the membrane proton channel, linked together by a central stalk and a peripheral stalk. During catalysis, ATP synthesis in the catalytic domain of F(1) is coupled via a rotary mechanism of the central stalk subunits to proton translocation. Subunits alpha and beta form the catalytic core in F(1). Rotation of the central stalk against the surrounding alpha(3)beta(3) subunits leads to hydrolysis of ATP in three separate catalytic sites on the beta subunits.

References

Note: This product is for in vitro research use only