

Catalase Rabbit mAb

Catalog No: #49444

Package Size: #49444-1 50ul #49444-2 100ul

Orders: order@signalwayantibody.com

Support: tech@signalwayantibody.com

Description

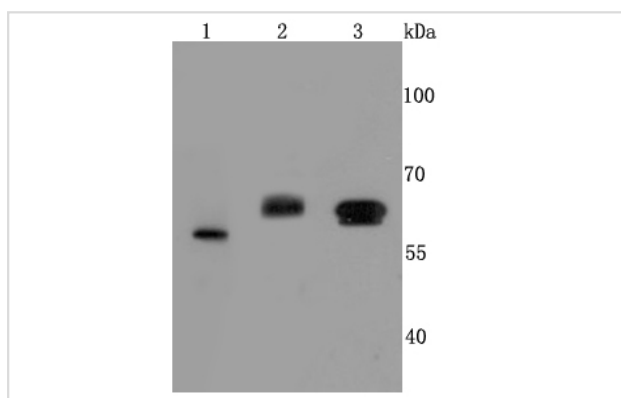
Product Name	Catalase Rabbit mAb
Host Species	Recombinant Rabbit
Clonality	Monoclonal antibody
Clone No.	JM11-12
Purification	ProA affinity purified
Applications	WB, IHC
Species Reactivity	Hu, Ms, RtZebrafish
Immunogen Description	recombinant protein
Other Names	Cas1 antibody CAT antibody CATA_HUMAN antibody Catalase antibody Cs1 antibody MGC138422 antibody MGC138424 antibody
Accession No.	Swiss-Prot#:P04040
Uniprot	P04040
GeneID	847;
Calculated MW	60 kDa
Formulation	1*TBS (pH7.4), 1%BSA, 40%Glycerol. Preservative: 0.05% Sodium Azide.
Storage	Store at -20°C

Application Details

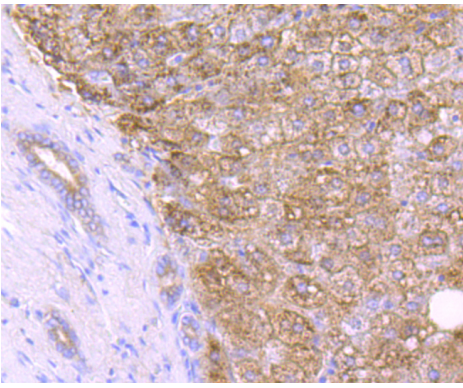
WB: 1:1,000-1:2,000

IHC: 1:50-1:200

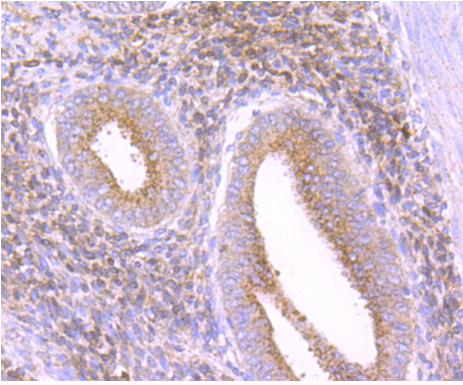
Images



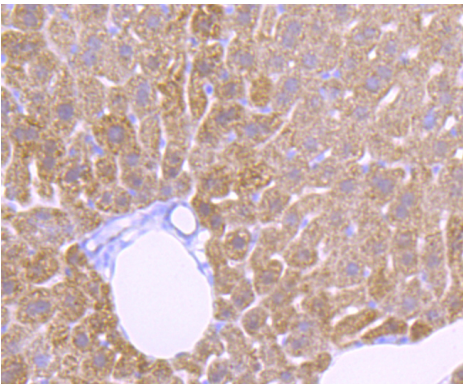
Western blot analysis of Catalase on Jurkat cells lysates using anti-Catalase antibody at 1/500 dilution. Positive control
Line 1: mouse brain Line 2: HepG2



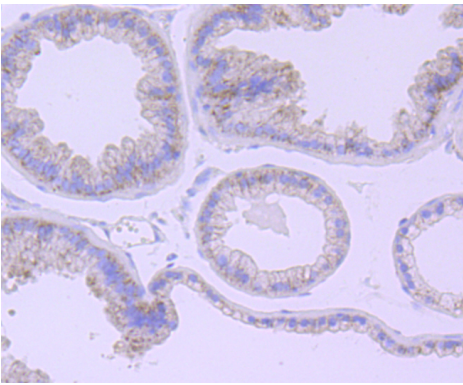
Immunohistochemical analysis of paraffin-embedded human liver tissue using anti-Catalase antibody. Counter stained with hematoxylin.



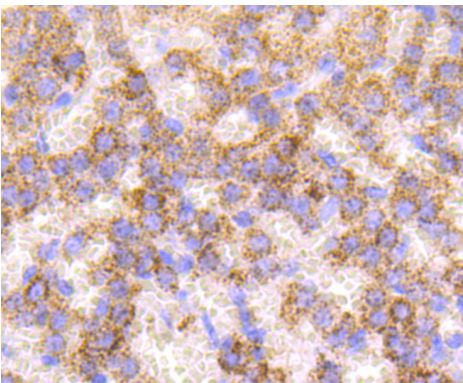
Immunohistochemical analysis of paraffin-embedded human uterus tissue using anti-Catalase antibody. Counter stained with hematoxylin.



Immunohistochemical analysis of paraffin-embedded mouse liver tissue using anti-Catalase antibody. Counter stained with hematoxylin.

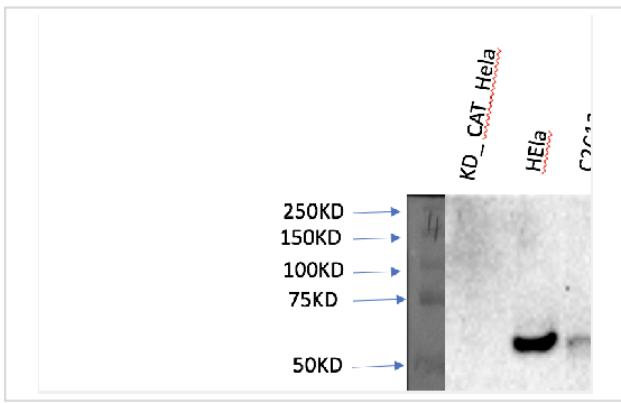


Immunohistochemical analysis of paraffin-embedded mouse prostate tissue using anti-Catalase antibody. Counter stained with hematoxylin.



Immunohistochemical analysis of paraffin-embedded rat adrenal gland tissue using anti-Catalase antibody. Counter stained with hematoxylin.

Western blotting analysis using Catalase Antibody #49444.



Background

Catalase is a peroxisome specific marker protein belonging to the catalase family. Defects in the gene encoding for the catalase protein can cause acatalasia, a disease characterized by the absence of catalase activity in red cells and associated with ulcerating oral lesions. Catalase is also an important regulator of oxidative stress and inflammation, and may contribute to the development of rheumatoid arthritis. Catalase, which can form a homotetramer, is found in all nearly all aerobically respiring organisms and functions in protecting cells from the toxic effects of hydrogen peroxide.

Note: This product is for in vitro research use only