

GBA Rabbit mAb

Catalog No: #49445

Package Size: #49445-1 50ul #49445-2 100ul

Orders: order@signalwayantibody.comSupport: tech@signalwayantibody.com

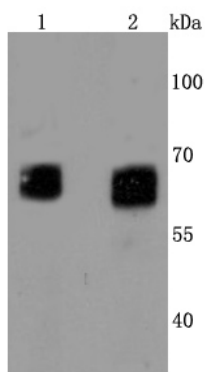
Description

Product Name	GBA Rabbit mAb
Host Species	Recombinant Rabbit
Clonality	Monoclonal antibody
Clone No.	JM10-76
Purification	ProA affinity purified
Applications	WB, IHC
Species Reactivity	Hu, Rt
Immunogen Description	recombinant protein
Other Names	Acid beta glucosidase antibody Acid beta-glucosidase antibody Alglucerase antibody Beta glucocerebrosidase antibody BETA GLUCOSIDASE, ACID antibody Beta-glucocerebrosidase antibody betaGC antibody D glucosyl N acylsphingosine glucohydrolase antibody D-glucosyl-N-acylsphingosine glucohydrolase antibody EC 3.2.1.45 antibody GBA antibody Gba protein antibody GBA1 antibody GC antibody GCase antibody GCB antibody GLCM_HUMAN antibody GLUC antibody Glucocerebrosidase (alt.) antibody Glucocerebrosidase antibody GLUCOCEREBROSIDASE PSEUDOGENE antibody Glucosidase beta antibody Glucosidase, beta, acid antibody Glucosidase, beta; acid (includes glucosylceramidase) antibody Glucosylceramidase antibody Imiglucerase antibody Lysosomal glucocerebrosidase antibody OTTHUMP00000033992 antibody OTTHUMP00000033993 antibody
Accession No.	Swiss-Prot#:P04062
Uniprot	P04062
GeneID	2629;
Calculated MW	60 kDa
Formulation	1*TBS (pH7.4), 1%BSA, 40%Glycerol. Preservative: 0.05% Sodium Azide.
Storage	Store at -20°C

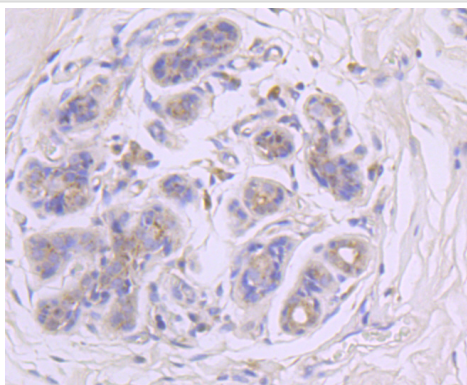
Application Details

WB: 1:1,000-5,000 IHC: 1:50-1:200

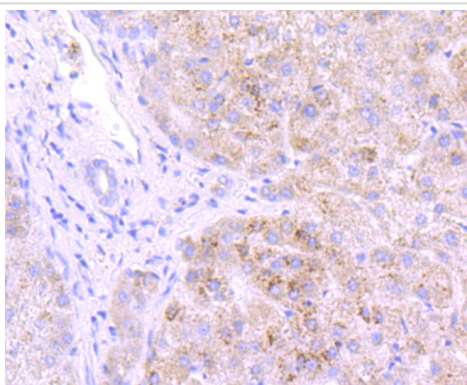
Images



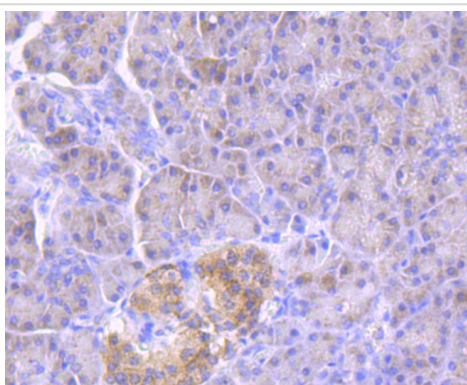
Western blot analysis of GBA on different cells lysates using anti-GBA antibody at 1/1,000 dilution. Positive control: Lane 1: HepG2 Lane 2: 293T



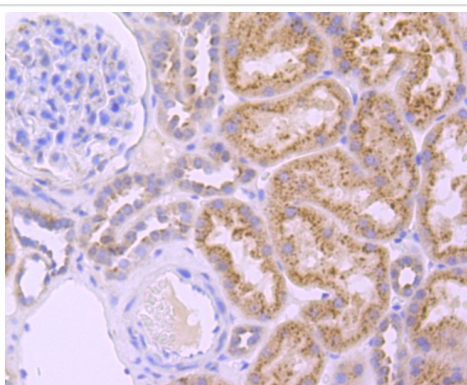
Immunohistochemical analysis of paraffin-embedded human breast carcinoma tissue using anti-GBA antibody. Counter stained with hematoxylin.



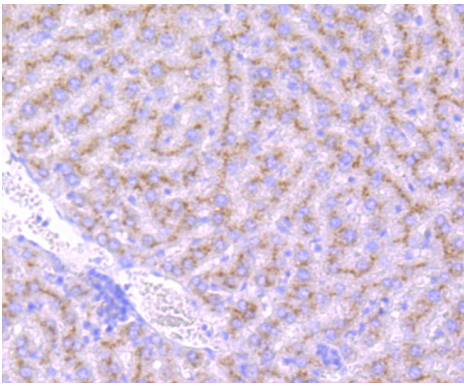
Immunohistochemical analysis of paraffin-embedded human liver tissue using anti-GBA antibody. Counter stained with hematoxylin.



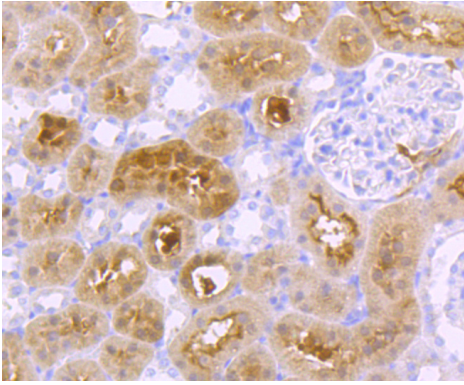
Immunohistochemical analysis of paraffin-embedded human pancreas tissue using anti-GBA antibody. Counter stained with hematoxylin.



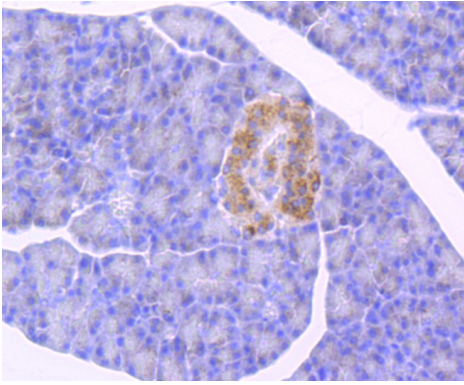
Immunohistochemical analysis of paraffin-embedded human kidney tissue using anti-GBA antibody. Counter stained with hematoxylin.



Immunohistochemical analysis of paraffin-embedded rat liver tissue using anti-GBA antibody. Counter stained with hematoxylin.



Immunohistochemical analysis of paraffin-embedded rat kidney tissue using anti-GBA antibody. Counter stained with hematoxylin.



Immunohistochemical analysis of paraffin-embedded mouse pancreas tissue using anti-GBA antibody. Counter stained with hematoxylin.

References

Note: This product is for in vitro research use only