

## SDHA Rabbit mAb

Catalog No: #49453



Package Size: #49453-1 50ul #49453-2 100ul

Orders: [order@signalwayantibody.com](mailto:order@signalwayantibody.com)Support: [tech@signalwayantibody.com](mailto:tech@signalwayantibody.com)

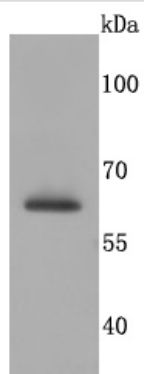
## Description

Product Name	SDHA Rabbit mAb
Host Species	Recombinant Rabbit
Clonality	Monoclonal antibody
Clone No.	JM10-83
Purification	ProA affinity purified
Applications	WB, ICC/IF, IHC, FC
Species Reactivity	Hu, Ms, Rt, Zebrafish
Immunogen Description	recombinant protein
Other Names	CMD1GG antibody DHSA_HUMAN antibody Flavoprotein subunit of complex II antibody Fp antibody PGL5 antibody SDH 2 antibody SDH1 antibody SDH2 antibody SDHA antibody SDHF antibody Succinate dehydrogenase [ubiquinone] flavoprotein subunit antibody Succinate dehydrogenase [ubiquinone] flavoprotein subunit mitochondrial antibody Succinate dehydrogenase [ubiquinone] flavoprotein subunit, mitochondrial antibody Succinate dehydrogenase complex flavoprotein subunit A antibody Succinate dehydrogenase complex flavoprotein subunit antibody Succinate dehydrogenase complex flavoprotein subunit precursor antibody Succinate dehydrogenase complex subunit A antibody Succinate dehydrogenase complex subunit A flavoprotein (Fp) antibody Succinate dehydrogenase complex subunit A flavoprotein antibody
Accession No.	Swiss-Prot#:P31040
Uniprot	P31040
GeneID	6389;
Calculated MW	68 kDa
Formulation	1*TBS (pH7.4), 1%BSA, 40%Glycerol. Preservative: 0.05% Sodium Azide.
Storage	Store at -20°C

## Application Details

WB: 1:500-1:1,000 IHC: 1:50-1:200 ICC: 1:50-1:200FC: 1:50-1:100

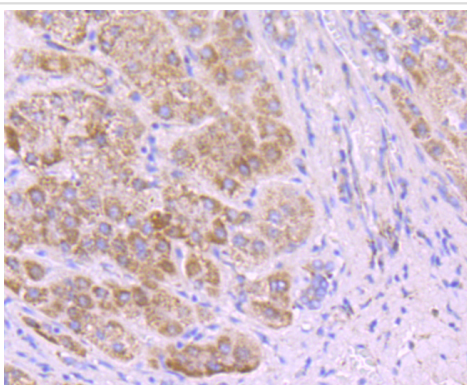
## Images



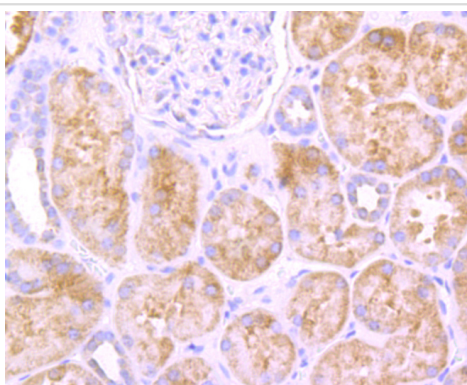
Western blot analysis of SDHA on Jurkat cells lysates using anti-SDHA antibody at 1/500 dilution.



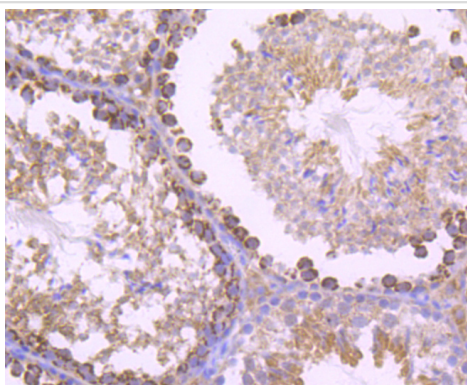
Immunohistochemical analysis of paraffin-embedded zebrafish tissue using anti-SDHA antibody. Counter stained with hematoxylin.



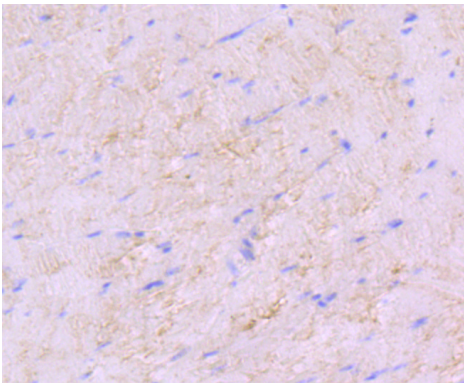
Immunohistochemical analysis of paraffin-embedded human liver tissue using anti-SDHA antibody. Counter stained with hematoxylin.



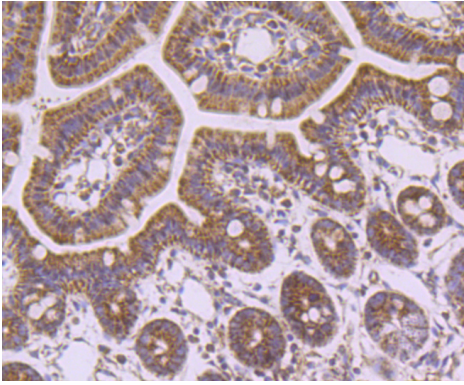
Immunohistochemical analysis of paraffin-embedded human kidney tissue using anti-SDHA antibody. Counter stained with hematoxylin.



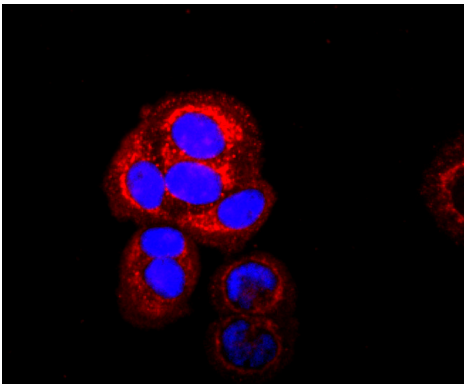
Immunohistochemical analysis of paraffin-embedded mouse testis tissue using anti-SDHA antibody. Counter stained with hematoxylin.



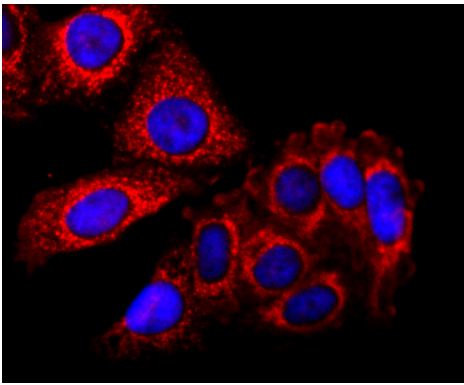
Immunohistochemical analysis of paraffin-embedded mouse skeletal muscle tissue using anti-SDHA antibody. Counter stained with hematoxylin.



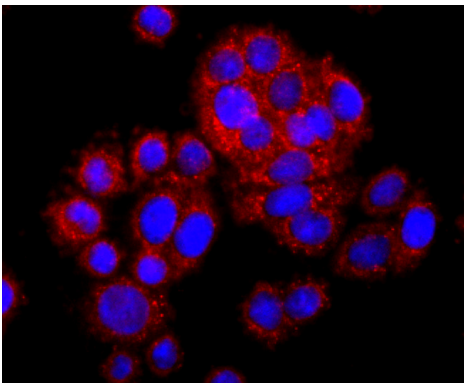
Immunohistochemical analysis of paraffin-embedded mouse colon tissue using anti-SDHA antibody. Counter stained with hematoxylin.



ICC staining SDHA in MCF-7 cells (red). The nuclear counter stain is DAPI (blue). Cells were fixed in paraformaldehyde, permeabilised with 0.25% Triton X100/PBS.



ICC staining SDHA in HepG2 cells (red). The nuclear counter stain is DAPI (blue). Cells were fixed in paraformaldehyde, permeabilised with 0.25% Triton X100/PBS.



ICC staining SDHA in NIH-3T3 cells (red). The nuclear counter stain is DAPI (blue). Cells were fixed in paraformaldehyde, permeabilised with 0.25% Triton X100/PBS.

## Background

In aerobic respiration reactions, succinate dehydrogenase (SDH) catalyzes the oxidation of succinate and ubiquinone to fumarate and ubiquinol. Four subunits comprise the SDH protein complex: a flavochrome subunit (SDHA), an iron-sulfur protein (SDHB), and two membrane-bound subunits (SDHC and SDHD) anchored to the inner mitochondrial membrane. Mutations to these subunits cause mitochondrial dysfunction, corresponding to several distinct disorders. Mutations in the membrane bound components may cause hereditary paraganglioma, while SDHA mutations are associated with juvenile encephalopathy as well as Leigh Syndrome, a severe neurological disorder. Inactivating mutations in SDHB correlate with inherited, but not necessarily sporadic, cases of pheochromocytoma.

## References

Note: This product is for in vitro research use only