

## CYP2E1 Rabbit mAb

Catalog No: #49461

Package Size: #49461-1 50ul #49461-2 100ul

Orders: [order@signalwayantibody.com](mailto:order@signalwayantibody.com)Support: [tech@signalwayantibody.com](mailto:tech@signalwayantibody.com)

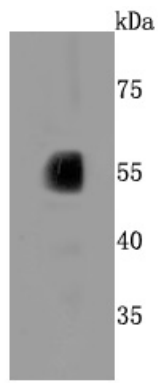
## Description

Product Name	CYP2E1 Rabbit mAb
Host Species	Recombinant Rabbit
Clonality	Monoclonal antibody
Clone No.	JM10-85
Purification	ProA affinity purified
Applications	WB, ICC/IF, IHC
Species Reactivity	Hu, Ms, Rt
Immunogen Description	recombinant protein
Other Names	4-nitrophenol 2-hydroxylase antibody CP2E1_HUMAN antibody CPE1 antibody CYP2E antibody Cyp2e1 antibody CYP1IE1 antibody Cytochrome P450 2E1 antibody Cytochrome P450 isozyme 3A antibody Cytochrome P450 LM3A antibody Cytochrome P450, family 2, subfamily e, polypeptide 1 antibody cytochrome P450, subfamily IIE (ethanol-inducible), polypeptide 1 antibody Cytochrome P450, subfamily IIE antibody Cytochrome P450-ALC antibody Cytochrome P450-J antibody Cytochrome P450RLM6 antibody EC 1.14.13.- antibody EC 1.14.13.n7 antibody Ethanol-inducible P450 antibody Flavoprotein-linked monooxygenase antibody MGC133529 antibody Microsomal monooxygenase antibody OTTHUMP00000020813 antibody OTTHUMP00000046571 antibody P450 ALC antibody P450-J antibody P450C2E antibody P450J antibody P450RLM6 antibody Xenobiotic monooxygenase antibody
Accession No.	Swiss-Prot#:P05181
Uniprot	P05181
GeneID	1571;
Calculated MW	57 kDa
Formulation	1*TBS (pH7.4), 1%BSA, 40%Glycerol. Preservative: 0.05% Sodium Azide.
Storage	Store at -20°C

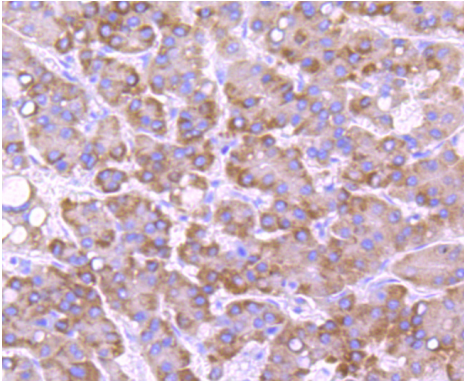
## Application Details

WB: 1:1,000-5,000 IHC: 1:50-1:200 ICC: 1:50-1:200

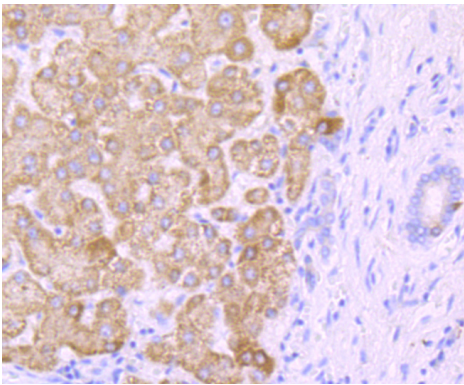
## Images



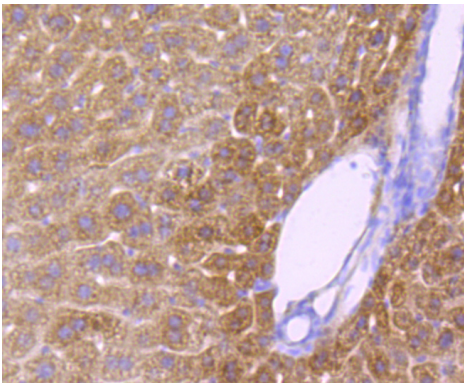
Western blot analysis of CYP2E1 on human liver cells lysates using anti-CYP2E1 antibody at 1/500 dilution.



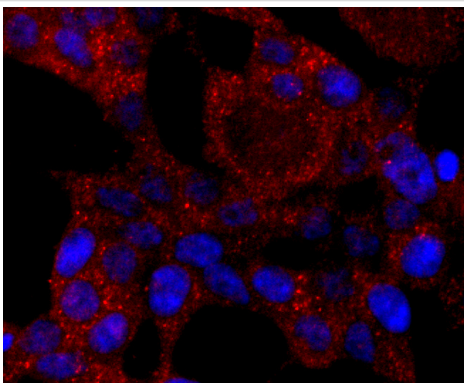
Immunohistochemical analysis of paraffin-embedded human liver cancer tissue using anti-CYP2E1 antibody. Counter stained with hematoxylin.



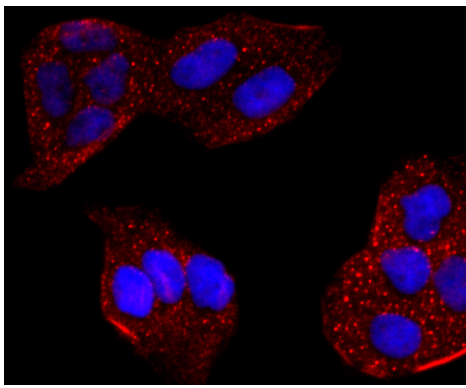
Immunohistochemical analysis of paraffin-embedded human liver tissue using anti-CYP2E1 antibody. Counter stained with hematoxylin.



Immunohistochemical analysis of paraffin-embedded mouse liver tissue using anti-CYP2E1 antibody. Counter stained with hematoxylin.



ICC staining CYP2E1 in 293-T cells (red). The nuclear counter stain is DAPI (blue). Cells were fixed in paraformaldehyde, permeabilised with 0.25% Triton X100/PBS.



ICC staining CYP2E1 in HeLa cells (red). The nuclear counter stain is DAPI (blue). Cells were fixed in paraformaldehyde, permeabilised with 0.25% Triton X100/PBS.

## Background

Metabolizes several precarcinogens, drugs, and solvents to reactive metabolites. Inactivates a number of drugs and xenobiotics and also bioactivates many xenobiotic substrates to their hepatotoxic or carcinogenic forms.

## References

Note: This product is for in vitro research use only