

CD62P Rabbit mAb

Catalog No: #49462

Package Size: #49462-1 50ul #49462-2 100ul

Orders: order@signalwayantibody.com

Support: tech@signalwayantibody.com

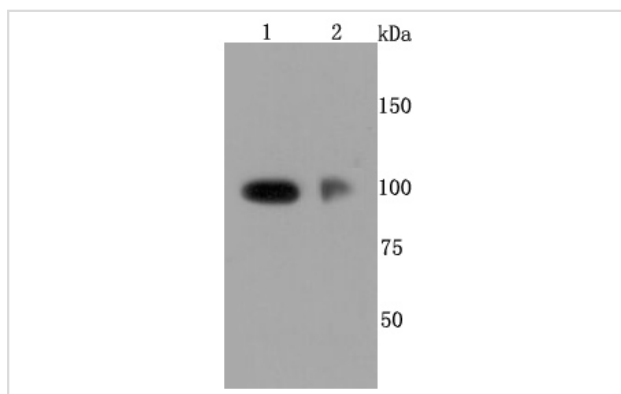
Description

Product Name	CD62P Rabbit mAb
Host Species	Recombinant Rabbit
Clonality	Monoclonal antibody
Clone No.	JM10-95
Purification	ProA affinity purified
Applications	WB, IHC
Species Reactivity	Hu
Immunogen Description	recombinant protein
Other Names	Antigen CD62 antibody CD62 antibody CD62 antigen-like family member P antibody CD62P antibody GMP 140 antibody GMP-140 antibody GMP140 antibody GMRP antibody Granule membrane protein 140 antibody Granulocyte membrane protein antibody GRMP antibody LECAM 3 antibody LECAM3 antibody Leukocyte endothelial cell adhesion molecule 3 antibody Leukocyte-endothelial cell adhesion molecule 3 antibody LYAM3_HUMAN antibody P Selectin antibody P-selectin antibody PADGEM antibody Platelet activation dependent granule-external membrane protein antibody Platelet alpha granule membrane protein antibody PSEL antibody Selectin P (granule membrane protein 140kDa, antigen CD62) antibody SELP antibody
Accession No.	Swiss-Prot#:P16109
Uniprot	P16109
GeneID	6403;
Calculated MW	100 kDa
Formulation	1*TBS (pH7.4), 1%BSA, 40%Glycerol. Preservative: 0.05% Sodium Azide.
Storage	Store at -20°C

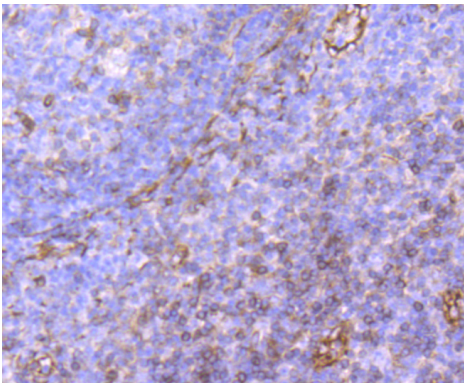
Application Details

WB: 1:1,000-1:2,000 IHC: 1:50-1:200

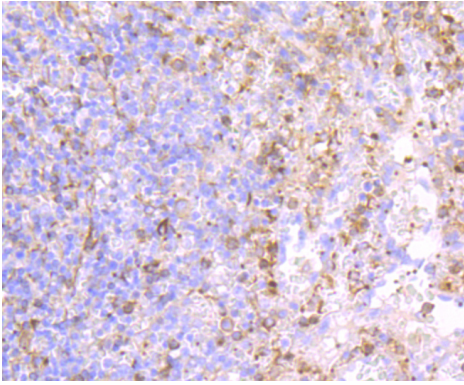
Images



Western blot analysis of CD62P on different cells lysates using anti-CD62P antibody at 1/500 dilution. Positive control:
Line1: HUVEC
Line2: Human placenta



Immunohistochemical analysis of paraffin-embedded human tonsil tissue using anti-CD62P antibody. Counter stained with hematoxylin.



Immunohistochemical analysis of paraffin-embedded human spleen tissue using anti-CD62P antibody. Counter stained with hematoxylin.

Background

Selectins, also designated CD62 antigens, comprise a family of carbohydrate-binding proteins involved in mediating cellular interactions with leukocytes. L-Selectin (also designated LECAM-1 or CD62L) is expressed on the majority of B and naive T cells and on most monocytes, neutrophils and eosinophils. L-Selectin interacts with specific carbohydrates expressed by activated endothelial cells. P-Selectin (also designated GMP-140 or CD62P), expressed on activated platelets and endothelial cells, and E-Selectin (also designated ELMA-1 or CD62E), expressed on endothelial cells, exhibit overlapping ligand specificities. Both recognize sialyl-Le (x) as a ligand and bind to specific carbohydrates on neutrophils and monocytes.

References

Note: This product is for in vitro research use only