

ATP5A1 Rabbit mAb

Catalog No: #49466

Package Size: #49466-1 50ul #49466-2 100ul

Orders: order@signalwayantibody.com

Support: tech@signalwayantibody.com

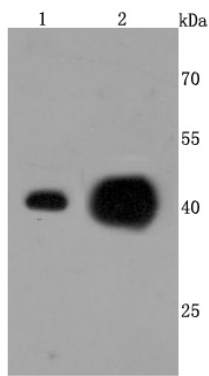
Description

Product Name	ATP5A1 Rabbit mAb
Host Species	Recombinant Rabbit
Clonality	Monoclonal antibody
Clone No.	JM110-04
Purification	ProA affinity purified
Applications	WB, ICC/IF, IHC, FC
Species Reactivity	Hu, Ms, Rt
Immunogen Description	recombinant protein
Other Names	ATP synthase alpha chain, mitochondrial antibody ATP synthase subunit alpha antibody ATP synthase subunit alpha mitochondrial antibody ATP synthase, H ⁺ transporting, mitochondrial F1 complex, alpha subunit, 1, cardiac muscle antibody ATP synthase, H ⁺ transporting, mitochondrial F1 complex, alpha subunit, 1 antibody ATP synthase, H ⁺ transporting, mitochondrial F1 complex, alpha subunit, isoform 1, cardiac muscle antibody ATP synthase, H ⁺ transporting, mitochondrial F1 complex, alpha subunit, isoform 2, non-cardiac muscle-like 2 antibody ATP sythase (F1 ATPase) alpha subunit antibody ATP5A antibody Atp5a1 antibody ATP5AL2 antibody ATPA_HUMAN antibody ATPM antibody Epididymis secretory sperm binding protein Li 123m antibody hATP1 antibody HEL-S-123m antibody MC5DN4 antibody mitochondrial antibody Mitochondrial ATP synthetase antibody Mitochondrial ATP synthetase oligomycin resistant antibody Modifier of Min 2 mouse homolog antibody Modifier of Min 2, mouse, homolog of antibody MOM2 antibody OMR antibody ORM antibody OTTHUMP00000163475 antibody
Accession No.	Swiss-Prot#:P25705
Uniprot	P25705
GeneID	498;
Calculated MW	50 kDa
Formulation	1*TBS (pH7.4), 1%BSA, 40%Glycerol. Preservative: 0.05% Sodium Azide.
Storage	Store at -20°C

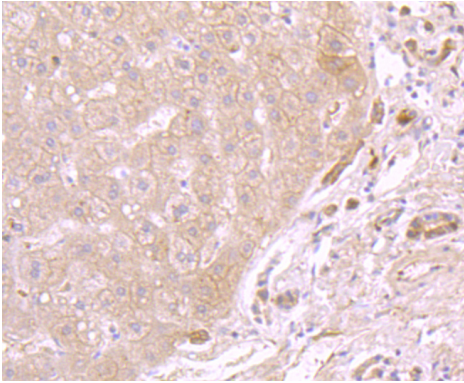
Application Details

WB: 1:1,000-5,000IHC: 1:50-1:200 ICC: 1:100-1:500FC: 1:50-1:100

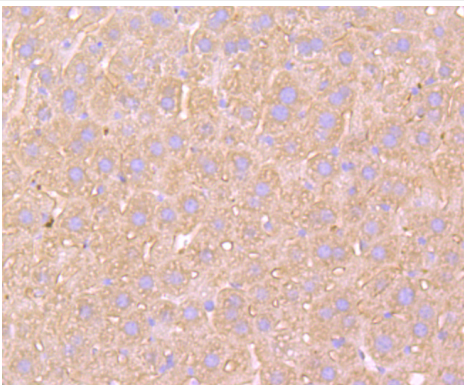
Images



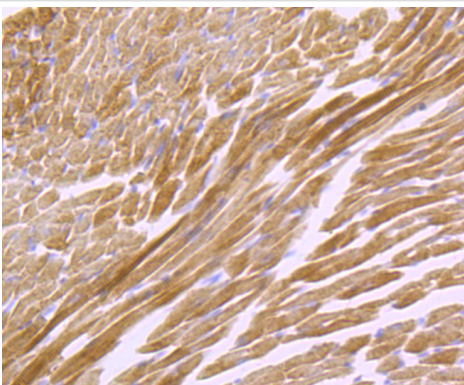
Western blot analysis of ATP5A1 on different cells lysates using anti-ATP5A1 antibody at 1/500 dilution. Positive control $\Omega\frac{1}{2}\Omega\frac{1}{2}$
 Line 1: Hela
 Line 2: MCF-7



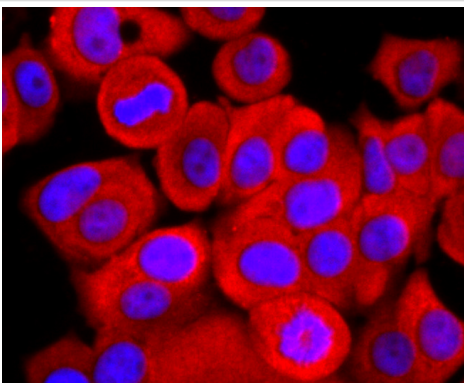
Immunohistochemical analysis of paraffin-embedded human liver tissue using anti-ATP5A1 antibody. Counter stained with hematoxylin.



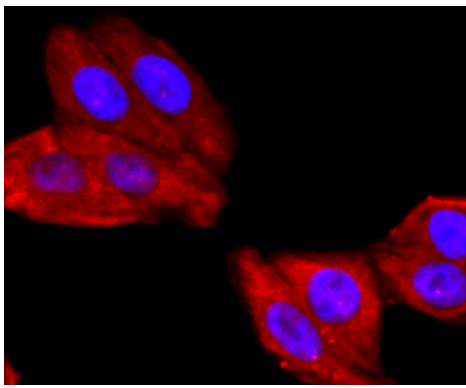
Immunohistochemical analysis of paraffin-embedded mouse liver tissue using anti-ATP5A1 antibody. Counter stained with hematoxylin.



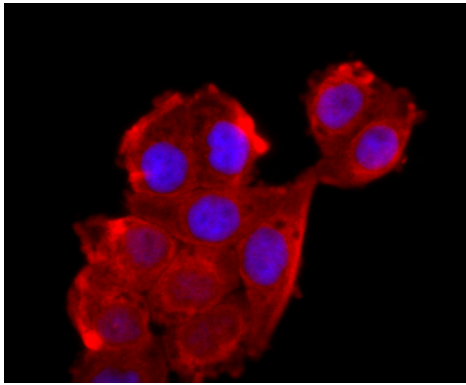
Immunohistochemical analysis of paraffin-embedded mouse heart muscle tissue using anti-ATP5A1 antibody. Counter stained with hematoxylin.



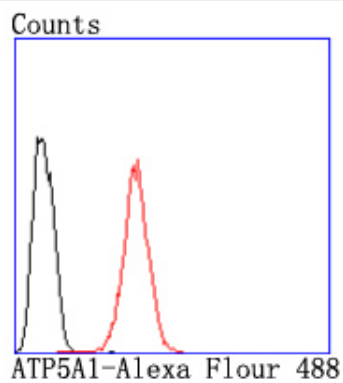
ICC staining ATP5A1 in MCF-7 cells (red). The nuclear counter stain is DAPI (blue). Cells were fixed in paraformaldehyde, permeabilised with 0.25% Triton X100/PBS.



ICC staining ATP5A1 in HepG2 cells (red). The nuclear counter stain is DAPI (blue). Cells were fixed in paraformaldehyde, permeabilised with 0.25% Triton X100/PBS.



ICC staining ATP5A1 in HeLa cells (red). The nuclear counter stain is DAPI (blue). Cells were fixed in paraformaldehyde, permeabilised with 0.25% Triton X100/PBS.



Flow cytometric analysis of HeLa cells with ATP5A1 antibody at 1/50 dilution (red) compared with an unlabelled control (cells without incubation with primary antibody; black). Alexa Fluor 488-conjugated goat anti rabbit IgG was used as the secondary antibody.

Background

Mitochondrial ATP synthases (ATPases) transduce the energy contained in membrane electrochemical proton gradients into the energy required for synthesis of high-energy phosphate bonds. ATPases contain two linked complexes: F1, the hydrophilic catalytic core; and F0, the membrane-embedded protein channel. F1 consists of three α chains and three β chains, which are weakly homologous, as well as one γ chain, one δ chain and one e chain. F0 consists of three subunits: a, b and c. The α chain of F1 is a regulatory subunit that contains 509 amino acids. Mitochondrial ATPase α chain (ATP5A) localizes to the mitochondria and catalyzes ATP synthesis.

References

Note: This product is for in vitro research use only