

VCP Rabbit mAb

Catalog No: #49469

Package Size: #49469-1 50ul #49469-2 100ul

Orders: order@signalwayantibody.com

Support: tech@signalwayantibody.com

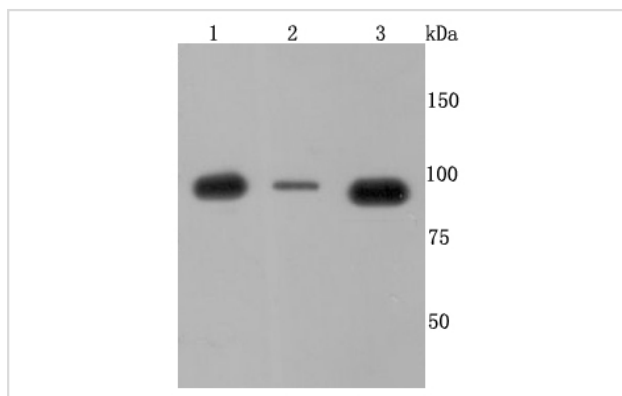
Description

Product Name	VCP Rabbit mAb
Host Species	Recombinant Rabbit
Clonality	Monoclonal antibody
Clone No.	JM11-15
Purification	ProA affinity purified
Applications	WB, ICC/IF, IHC, FC, IP
Species Reactivity	Hu, Ms, Rt, Zebrafish
Immunogen Description	recombinant protein
Other Names	15S Mg(2+) ATPase p97 subunit antibody 15S Mg(2+)-ATPase p97 subunit antibody ALS14 antibody ATPase p97 antibody CDC48 antibody IBMPFD antibody MGC131997 antibody MGC148092 antibody MGC8560 antibody p97 antibody TER ATPase antibody TERA antibody TERA_HUMAN antibody Transitional endoplasmic reticulum ATPase antibody Valosin containing protein antibody Valosin-containing protein antibody VCP antibody Yeast Cdc48p homolog antibody
Accession No.	Swiss-Prot#:P55072
Uniprot	P55072
GeneID	7415;
Calculated MW	89 kDa
Formulation	1*TBS (pH7.4), 1%BSA, 40%Glycerol. Preservative: 0.05% Sodium Azide.
Storage	Store at -20°C

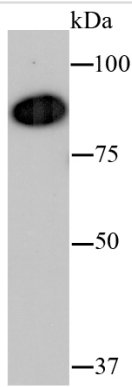
Application Details

WB: 1:1,000-5,000 IHC: 1:50-1:200 ICC: 1:50-1:200 FC: 1:50-1:100

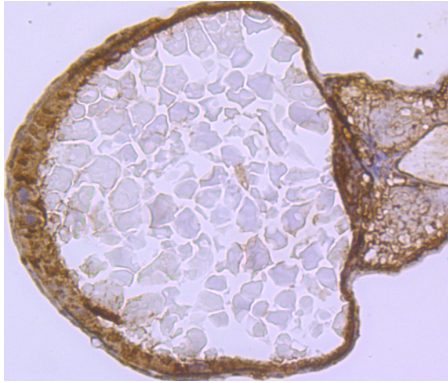
Images



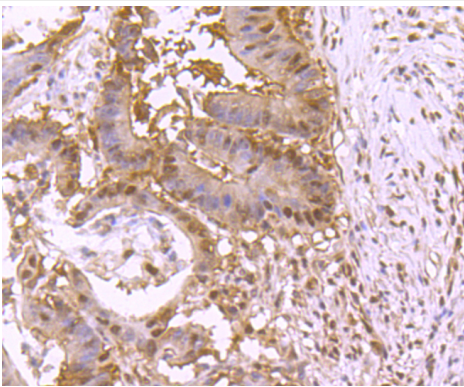
Western blot analysis of VCP on different cells lysates using anti-VCP antibody at 1/500 dilution. Positive control Ω $\frac{1}{2}$ Ω $\frac{1}{2}$
 Line 1: SH-SY5Y Line 2: HepG2 Line 3: Hela



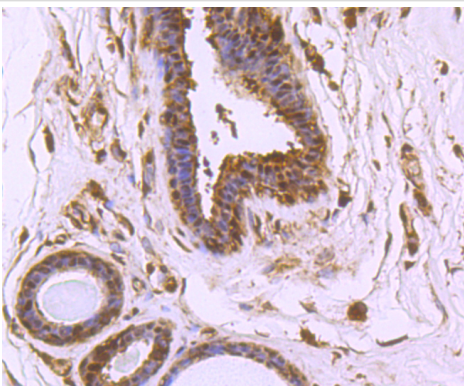
Western blot analysis of VCP on hybrid fish (crucian-carp) heart tissue lysate using anti-VCP antibody at 1/500 dilution.



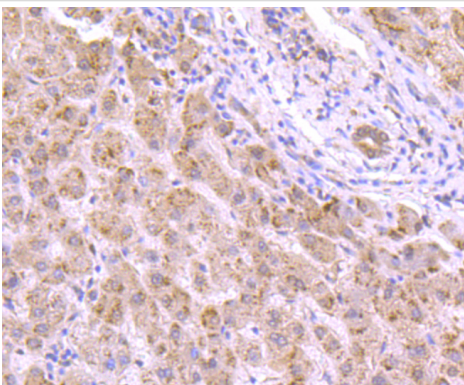
Immunohistochemical analysis of paraffin-embedded zebrafish tissue using anti-VCP antibody. Counter stained with hematoxylin.



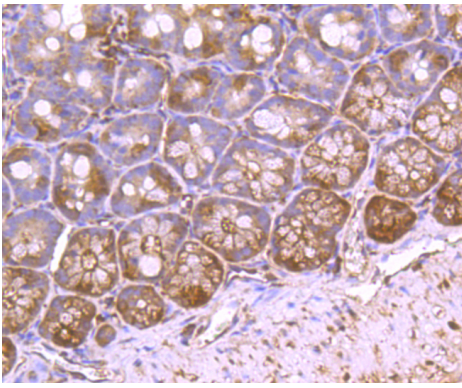
Immunohistochemical analysis of paraffin-embedded human colon cancer tissue using anti-VCP antibody. Counter stained with hematoxylin.



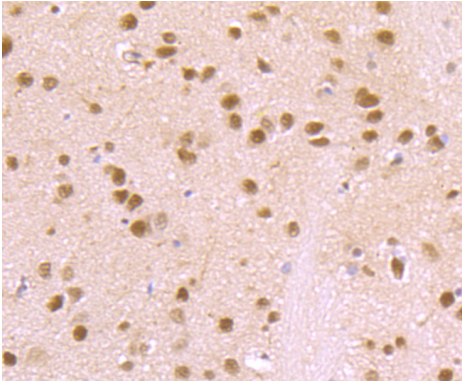
Immunohistochemical analysis of paraffin-embedded human breast cancer tissue using anti-VCP antibody. Counter stained with hematoxylin.



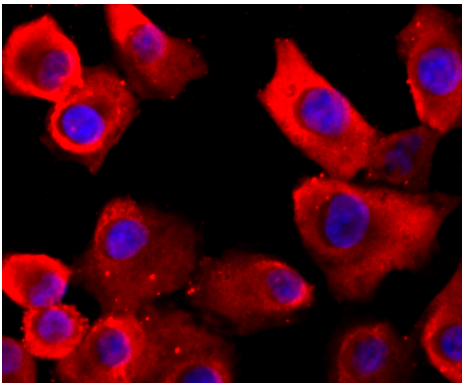
Immunohistochemical analysis of paraffin-embedded human liver tissue using anti-VCP antibody. Counter stained with hematoxylin.



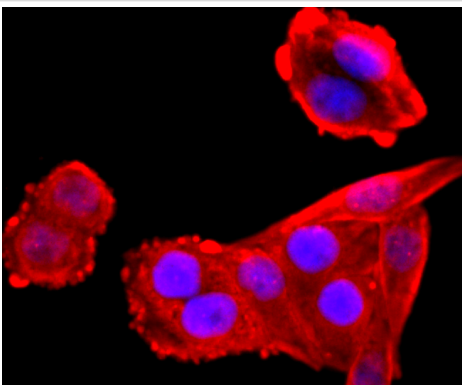
Immunohistochemical analysis of paraffin-embedded mouse colon tissue using anti-VCP antibody. Counter stained with hematoxylin.



Immunohistochemical analysis of paraffin-embedded rat brain tissue using anti-VCP antibody. Counter stained with hematoxylin.



ICC staining VCP in A549 cells (red). The nuclear counter stain is DAPI (blue). Cells were fixed in paraformaldehyde, permeabilised with 0.25% Triton X100/PBS.



ICC staining VCP in HeLa cells (red). The nuclear counter stain is DAPI (blue). Cells were fixed in paraformaldehyde, permeabilised with 0.25% Triton X100/PBS.

Background

Valosin containing protein (VCP), also designated TERA (for transitional endoplasmic reticulum ATPase) or p97, is a member of the AAA family of ATPases, which are involved in a variety of cellular activities. VCP is the mammalian homolog of *Saccharomyces cerevisiae* Cdc48, a protein essential for the completion of mitosis in yeast. VCP is thought to be involved in a variety of membrane functions and in the regulation of the cell cycle. It associates with ubiquitinated I κ B- α as well as with the 26S Proteasome, indicating a potential role for VCP in the proteasome-mediated degradation of I κ B- α .

References

Note: This product is for in vitro research use only