

AFP Polyclonal Antibody

Catalog No: #41555

Package Size: #41555-1 50ul #41555-2 100ul

Orders: order@signalwayantibody.comSupport: tech@signalwayantibody.com

Description

| | |
|-----------------------|---|
| Product Name | AFP Polyclonal Antibody |
| Host Species | Rabbit |
| Clonality | Polyclonal |
| Purification | The antibody was affinity-purified from rabbit antiserum by affinity-chromatography using epitope-specific immunogen. |
| Applications | WB ELISA |
| Species Reactivity | Hu |
| Specificity | AFP Polyclonal Antibody detects endogenous levels of AFP protein. |
| Immunogen Type | peptide |
| Immunogen Description | Synthesized peptide derived from the Internal region of human AFP. |
| Target Name | AFP |
| Other Names | AFP; HPAFP; Alpha-fetoprotein; Alpha-1-fetoprotein; Alpha-fetoglobulin |
| Accession No. | Swiss-Prot: P02771NCBI Gene ID: 174 |
| Uniprot | P02771 |
| GeneID | 174; |
| SDS-PAGE MW | 70kd |
| Concentration | 1mg/ml |
| Formulation | Liquid in PBS containing 50% glycerol, 0.5% BSA and 0.02% sodium azide. |
| Storage | Store at -20°C/1 year |

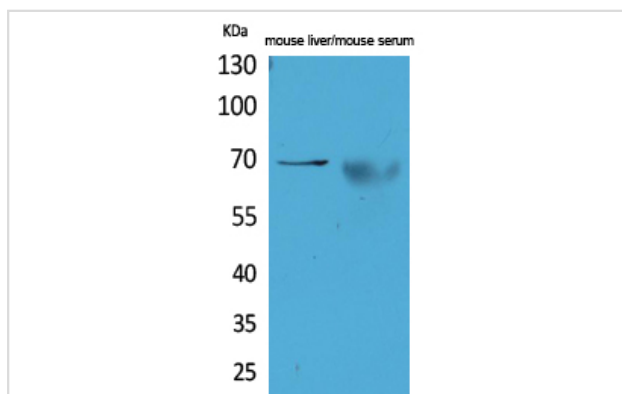
Application Details

Western Blot: 1/500 - 1/2000.

ELISA: 1/20000.

Not yet tested in other applications.

Images



Western Blot analysis of mouse liver mouse serum cells using AFP Polyclonal Antibody

Note: This product is for in vitro research use only