

Podoplanin Rabbit mAb

Catalog No: #49474



Package Size: #49474-1 50ul #49474-2 100ul

Orders: order@signalwayantibody.comSupport: tech@signalwayantibody.com

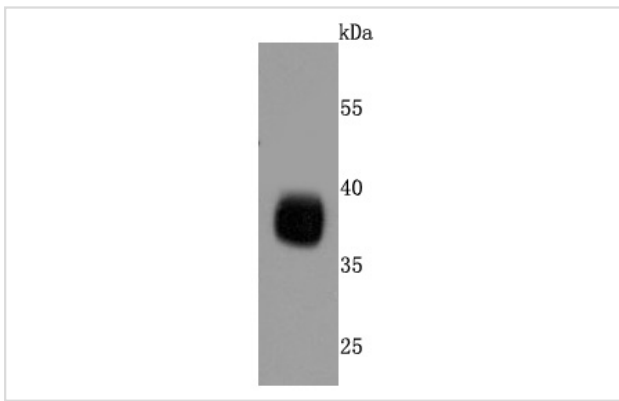
Description

Product Name	Podoplanin Rabbit mAb
Host Species	Recombinant Rabbit
Clonality	Monoclonal antibody
Clone No.	JM31-21
Purification	ProA affinity purified
Applications	WB, IHC
Species Reactivity	Hu
Immunogen Description	recombinant protein
Other Names	Aggrus antibody Glycoprotein 36 KD antibody Glycoprotein 36 antibody gp 36 antibody GP 38 antibody GP 40 antibody gp36 antibody GP38 antibody GP40 antibody HT1A 1 antibody HT1A1 antibody hT1alpha 1 antibody hT1alpha 2 antibody hT1alpha1 antibody hT1alpha2 antibody Lung type I cell membrane associated glycoprotein antibody Lung type I cell membrane associated glycoprotein isoform a antibody Lung type I cell membrane associated glycoprotein T1A 2 antibody OTS 8 antibody OTS8 antibody OTTHUMP00000009640 antibody OTTHUMP00000044504 antibody PA2.26 antibody PA2.26 antigen antibody Pdpn antibody PDPN_HUMAN antibody Podoplanin antibody PSEC0003 antibody PSEC0025 antibody T1 alpha antibody T1 ALPHA GENE antibody T1-alpha antibody T1A 2 antibody T1A antibody T1A antibody TIA 2 antibody TIA2 antibody
Accession No.	Swiss-Prot#:Q86YL7
Uniprot	Q86YL7
GeneID	10630;
Calculated MW	36 kDa
Formulation	1*TBS (pH7.4), 1%BSA, 40%Glycerol. Preservative: 0.05% Sodium Azide.
Storage	Store at -20°C

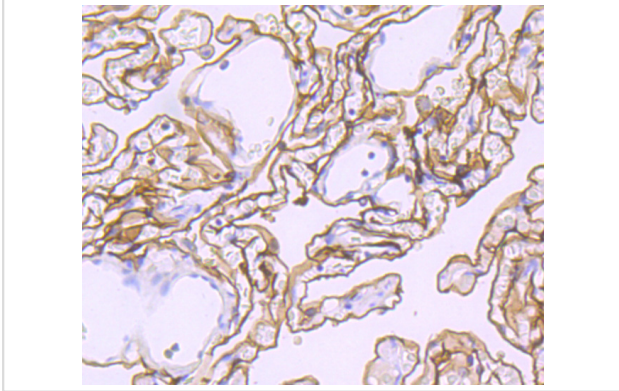
Application Details

WB: 1:2,000-1:5,000 IHC: 1:50-1:200

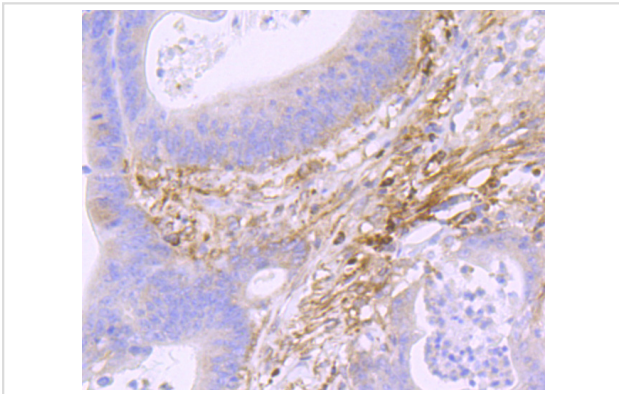
Images



Western blot analysis of Podoplanin on human lung cells lysates using anti-Podoplanin antibody at 1/500 dilution.



Immunohistochemical analysis of paraffin-embedded human lung tissue using anti-Podoplanin antibody. Counter stained with hematoxylin.



Immunohistochemical analysis of paraffin-embedded human colon cancer tissue using anti-Podoplanin antibody. Counter stained with hematoxylin.

Background

Puromycin aminonucleoside nephrosis (PAN) is a rat model for human minimal change nephropathy. During PAN, severe proteinuria is induced that is paralleled by a reduced expression of a rat podocyte protein, named podoplanin. Podoplanin, also known as glycoprotein 38 (gp38) is a type I membrane protein. Podoplanin localizes in stromal cells of peripheral lymphoid tissue and thymic epithelial cells. As a regulator of the lymphatic endothelium, podoplanin probably plays a role in maintaining the unique shape of podocytes.

References

Note: This product is for in vitro research use only