

## LY6A Rabbit mAb

Catalog No: #49480

Package Size: #49480-1 50ul #49480-2 100ul

Orders: [order@signalwayantibody.com](mailto:order@signalwayantibody.com)Support: [tech@signalwayantibody.com](mailto:tech@signalwayantibody.com)

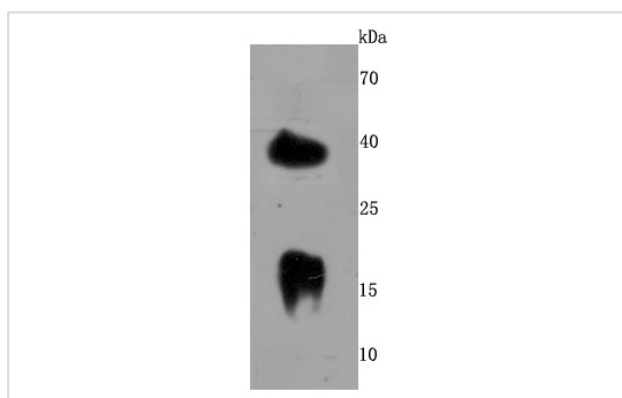
## Description

Product Name	LY6A Rabbit mAb
Host Species	Recombinant Rabbit
Clonality	Monoclonal antibody
Clone No.	JM53-11
Purification	ProA affinity purified
Applications	WB, IHC
Species Reactivity	Ms
Immunogen Description	recombinant protein
Other Names	Ly-6A.2/Ly-6E. antibody Ly-6A.2/Ly-6E.1 antibody Ly6a antibody LY6A_MOUSE antibody Ly6al antibody Lymphocyte antigen 6A-2/6E-1 antibody Lymphocyte antigen Ly 6A.2/Ly 6E.1 antibody SCA-1 antibody Stem cell antigen 1 antibody T cell activating protein antibody T-cell-activating protein antibody TAP antibody
Accession No.	Swiss-Prot#:P05533
Uniprot	P05533
GeneID	110454;
Calculated MW	14/40 kDa
Formulation	1*TBS (pH7.4), 1%BSA, 40%Glycerol. Preservative: 0.05% Sodium Azide.
Storage	Store at -20°C

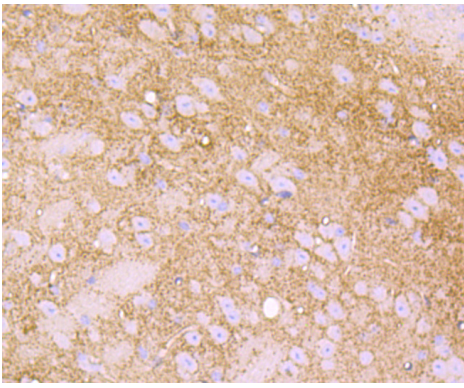
## Application Details

WB: 1:1,000-5,000 IHC: 1:50-1:200

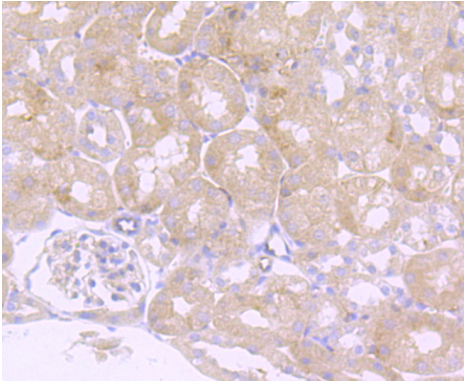
## Images



Western blot analysis of LY6A on mouse brain cells lysates using anti-LY6A antibody at 1/500 dilution.



Immunohistochemical analysis of paraffin-embedded brain mouse tissue using anti-LY6A antibody. Counter stained with hematoxylin.



Immunohistochemical analysis of paraffin-embedded mouse kidney tissue using anti-LY6A antibody. Counter stained with hematoxylin.

## References

---

Note: This product is for in vitro research use only