

Rac1-2-3 Rabbit mAb

Catalog No: #49493



Package Size: #49493-1 50ul #49493-2 100ul

Orders: order@signalwayantibody.com

Support: tech@signalwayantibody.com

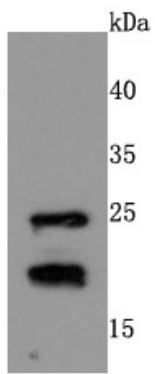
Description

Product Name	Rac1-2-3 Rabbit mAb
Host Species	Recombinant Rabbit
Clonality	Monoclonal antibody
Clone No.	JM11-29
Purification	ProA affinity purified
Applications	WB, ICC/IF, IHC
Species Reactivity	Hu, Ms, Rt
Immunogen Description	recombinant protein
Other Names	Cell migration inducing gene 5 protein antibody EN 7 antibody OTTMUSP00000004488 antibody p21 Rac3 antibody p21-Rac3 antibody Rac1B antibody RAC3 antibody RAC3_HUMAN antibody RAS related C3 botulinum substrate 3 antibody Ras related C3 botulinum toxin substrate 3 (rho family small GTP binding protein Rac3) antibody Ras related C3 botulinum toxin substrate 3 (rho family, small GTP binding protein Rac3) antibody Ras-related C3 botulinum toxin substrate 3 antibody Rho family small GTP binding protein Rac3 antibody RP23-84C12.18 antibody EN-7 antibody EN7 antibody GX antibody HSPC 022 antibody HSPC022 antibody p21 Rac 2 antibody p21 Rac2 antibody p21-Rac2 antibody p21Rac2 antibody RAC 2 antibody Rac2 antibody RAC2_HUMAN antibody Ras related C3 botulinum toxin substrate 2 (rho family, small GTP binding protein Rac2) antibody Ras related C3 botulinum toxin substrate 2 antibody Ras related C3 botulinum toxin substrate 3 (rho family, small GTP binding protein Rac2) antibody Ras related C3 botulinum toxin substrate 3 antibody Ras-related C3 botulinum toxin substrate 2 antibody Rho family small GTP binding protein Rac 2 antibody Rho family small GTP binding protein Rac2 antibody Small G protein antibody Cell migration-inducing gene 5 protein antibody MGC111543 antibody MIG5 antibody Migration inducing gene 5 antibody Migration inducing protein 5 antibody p21 Rac1 antibody p21-Rac1 antibody Rac 1 antibody RAC1 antibody RAC1_HUMAN antibody Ras like protein TC25 antibody Ras related C3 botulinum toxin substrate 1 (rho family, small GTP binding protein Rac1) antibody Ras-like protein TC25 antibody Ras-related C3 botulinum toxin substrate 1 antibody Rho family small GTP binding protein Rac1 antibody TC 25 antibody TC25 antibody
Accession No.	Swiss-Prot#:P63000
Uniprot	P63000
GenelD	5879;
Calculated MW	21/24 kDa
Formulation	1*TBS (pH7.4), 1%BSA, 40%Glycerol. Preservative: 0.05% Sodium Azide.
Storage	Store at -20°C

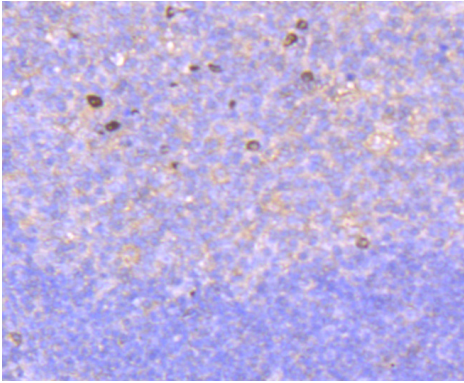
Application Details

WB: 1:500-1:2,000 IHC: 1:50-1:200 ICC: 1:50-1:200

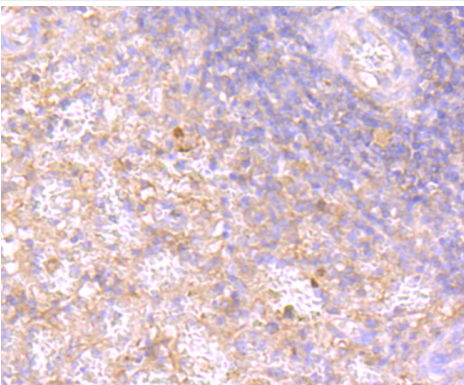
Images



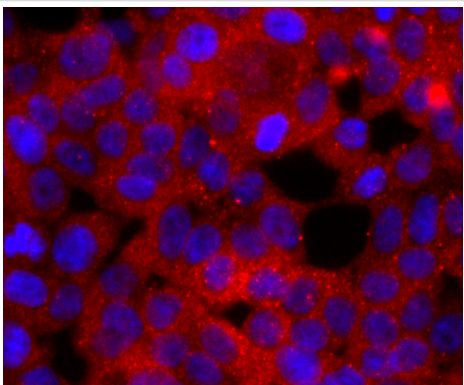
Western blot analysis of RAC1/2/3 on MCF-7 cells lysates using anti-RAC1/2/3 antibody at 1/500 dilution.



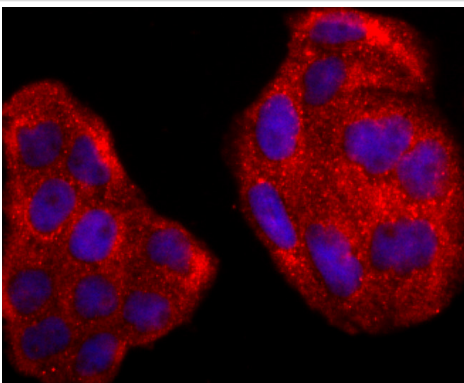
Immunohistochemical analysis of paraffin-embedded human tonsil tissue using anti-RAC1/2/3 antibody. Counter stained with hematoxylin.



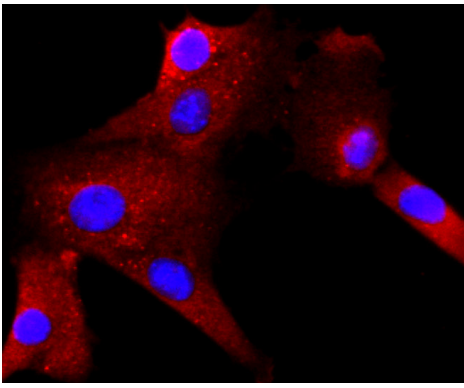
Immunohistochemical analysis of paraffin-embedded human spleen tissue using anti-RAC1/2/3 antibody. Counter stained with hematoxylin.



ICC staining RAC1/2/3 in 293T cells (red). The nuclear counter stain is DAPI (blue). Cells were fixed in paraformaldehyde, permeabilised with 0.25% Triton X100/PBS.



ICC staining RAC1/2/3 in HeLa cells (red). The nuclear counter stain is DAPI (blue). Cells were fixed in paraformaldehyde, permeabilised with 0.25% Triton X100/PBS.



ICC staining RAC1/2/3 in NIH-3T3 cells (red). The nuclear counter stain is DAPI (blue). Cells were fixed in paraformaldehyde, permeabilised with 0.25% Triton X100/PBS.

Background

Plasma membrane-associated small GTPase which cycles between active GTP-bound and inactive GDP-bound states. In its active state, binds to a variety of effector proteins to regulate cellular responses such as secretory processes, phagocytosis of apoptotic cells, epithelial cell polarization and growth-factor induced formation of membrane ruffles. Rac1 p21/rho GDI heterodimer is the active component of the cytosolic factor sigma 1, which is involved in stimulation of the NADPH oxidase activity in macrophages (By similarity). Essential for the SPATA13-mediated regulation of cell migration and adhesion assembly and disassembly. Isoform B has an accelerated GEF-independent GDP/GTP exchange and an impaired GTP hydrolysis, which is restored partially by GTPase-activating proteins. It is able to bind to the GTPase-binding domain of PAK but not full-length PAK in a GTP-dependent manner, suggesting that the insertion does not completely abolish effector interaction.

References

Note: This product is for in vitro research use only