

TTR Rabbit mAb

Catalog No: #49496

Package Size: #49496-1 50ul #49496-2 100ul

Orders: order@signalwayantibody.com

Support: tech@signalwayantibody.com

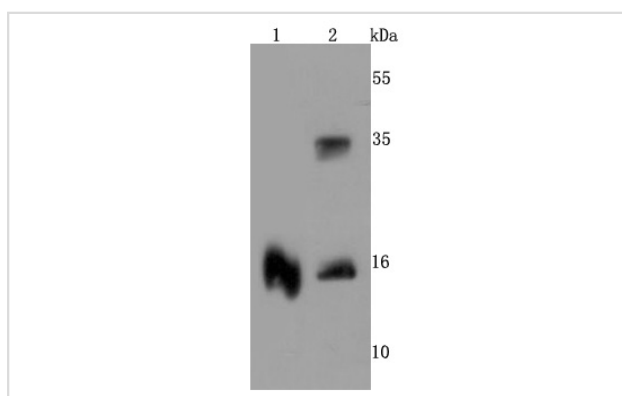
Description

Product Name	TTR Rabbit mAb
Host Species	Recombinant Rabbit
Clonality	Monoclonal antibody
Clone No.	JM11-43
Purification	ProA affinity purified
Applications	WB, IP, ICC/IF, IHC, FC
Species Reactivity	Hu
Immunogen Description	recombinant protein
Other Names	Alternative names Amyloid polyneuropathy antibody Amyloidosis I antibody ATTR antibody Carpal tunnel syndrome 1 antibody CTS antibody CTS1 antibody Dysprealbuminemic euthyroidal hyperthyroxinemia antibody Dystransthyretinemic hyperthyroxinemia antibody Epididymis luminal protein 111 antibody HEL111 antibody HsT2651 antibody PALB antibody Prealbumin amyloidosis type I antibody Prealbumin antibody Prealbumin Thyroxine-binding antibody Senile systemic amyloidosis antibody TBPA antibody Thyroxine binding prealbumin antibody Transthyretin antibody TTHY_HUMAN antibody TTR antibody TTR protein antibody
Accession No.	Swiss-Prot#:P02766
Uniprot	P02766
GeneID	7276;
Calculated MW	16 kDa
Formulation	1*TBS (pH7.4), 1%BSA, 40%Glycerol. Preservative: 0.05% Sodium Azide.
Storage	Store at -20°C

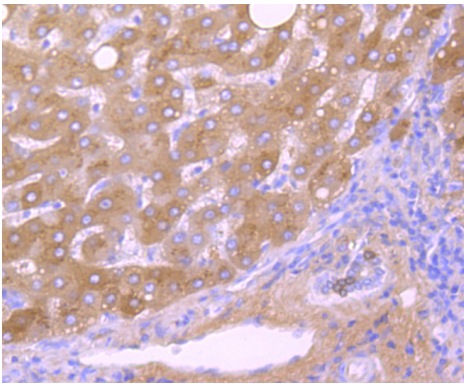
Application Details

WB: 1:500-1:2,000 IHC: 1:50-1:200 ICC: 1:50-1:200FC: 1:50-1:100

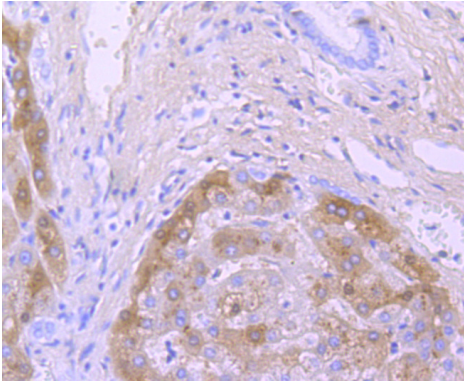
Images



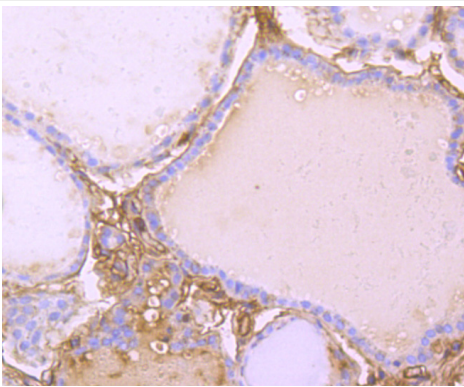
Western blot analysis of TTR on different cells lysates using anti-TTR antibody at 1/500 dilution. Positive control
 Line 1: Human brain
 Line 2: Human lung



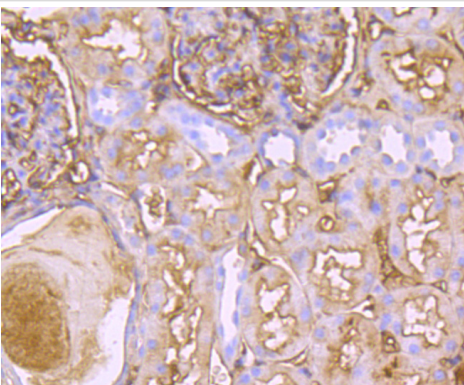
Immunohistochemical analysis of paraffin-embedded human liver cancer tissue using anti-TTR antibody. Counter stained with hematoxylin.



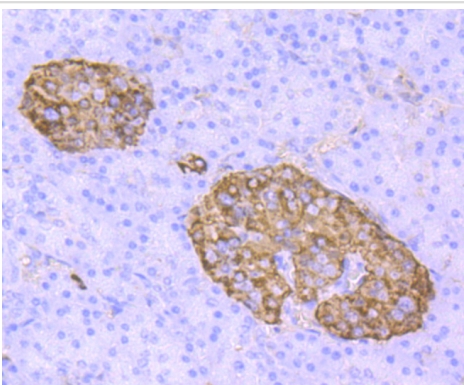
Immunohistochemical analysis of paraffin-embedded human liver tissue using anti-TTR antibody. Counter stained with hematoxylin.



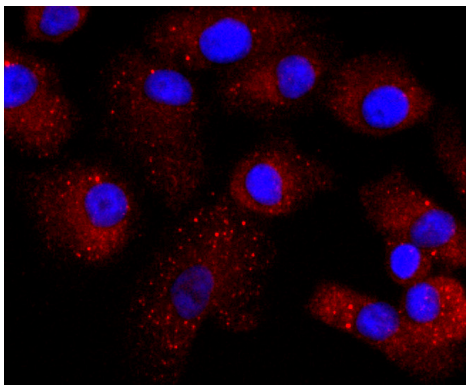
Immunohistochemical analysis of paraffin-embedded human thyroid tissue using anti-TTR antibody. Counter stained with hematoxylin.



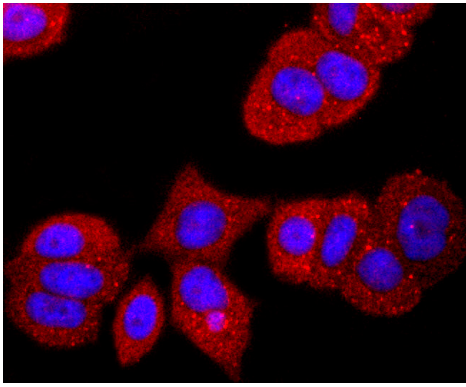
Immunohistochemical analysis of paraffin-embedded human kidney tissue using anti-TTR antibody. Counter stained with hematoxylin.



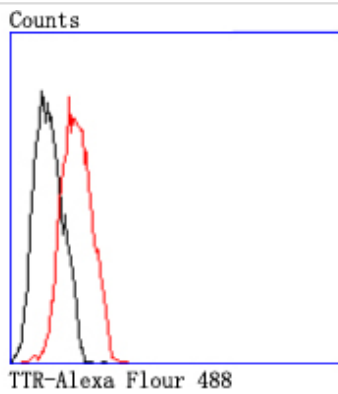
Immunohistochemical analysis of paraffin-embedded human pancreas tissue using anti-TTR antibody. Counter stained with hematoxylin.



ICC staining TTR in A549 cells (red). The nuclear counter stain is DAPI (blue). Cells were fixed in paraformaldehyde, permeabilised with 0.25% Triton X100/PBS.



ICC staining TTR in MCF-7 cells (red). The nuclear counter stain is DAPI (blue). Cells were fixed in paraformaldehyde, permeabilised with 0.25% Triton X100/PBS.



Flow cytometric analysis of MCF-7 cells with TTR antibody at 1/50 dilution (red) compared with an unlabelled control (cells without incubation with primary antibody; black). Alexa Fluor 488-conjugated goat anti rabbit IgG was used as the secondary antibody.

Background

Prealbumin, also designated transthyretin, is a major thyroid-hormone binding protein involved in transporting thyroxine from the bloodstream to the brain. Prealbumin is located in the cytoplasm and in the vesicles of developing rat brain cells, and is thought to be transported there from the cerebrospinal fluid via endocytosis. Sequence variants of this protein have been identified in amyloid fibrils from patients with familial amyloidotic polyneuropathy (FAP), the most common form of hereditary systemic amyloidosis. Although the biologically active form of Prealbumin is a tetramer, the amyloidogenic intermediate is thought to be a monomeric species. Prealbumin also binds to the retinol carrier protein RBP (retinol-binding protein). The gene encoding Prealbumin maps to human chromosome 18q12.1.

References

Note: This product is for in vitro research use only