

mGluR1 Rabbit mAb

Catalog No: #49497

Package Size: #49497-1 50ul #49497-2 100ul

Orders: order@signalwayantibody.comSupport: tech@signalwayantibody.com

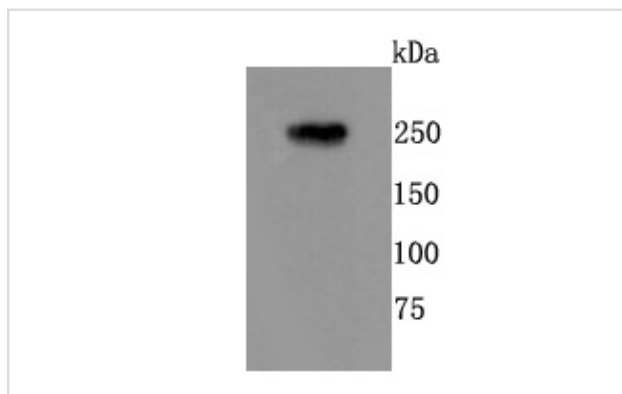
Description

Product Name	mGluR1 Rabbit mAb
Host Species	Recombinant Rabbit
Clonality	Monoclonal antibody
Clone No.	JM11-61
Purification	ProA affinity purified
Applications	WB, IHC
Species Reactivity	Hu, Ms, Rt
Immunogen Description	recombinant protein
Other Names	Glutamate receptor metabotropic 1 antibody glutamate receptor, metabotropic 1 antibody GPRC1A antibody GRM1 antibody GRM1-Alpha antibody GRM1_HUMAN antibody GRM1A antibody Metabotropic glutamate receptor 1 antibody mGlu1 antibody mGluR1 antibody MGLUR1-Alpha antibody MGLUR1A antibody SCAR13 antibody
Accession No.	Swiss-Prot#:Q13255
Uniprot	Q13255
GeneID	2911;
Calculated MW	200 kDa
Formulation	1*TBS (pH7.4), 1%BSA, 40%Glycerol. Preservative: 0.05% Sodium Azide.
Storage	Store at -20°C

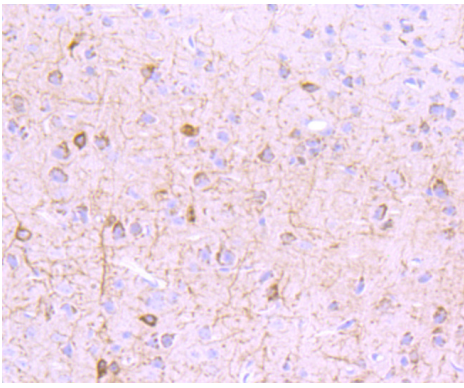
Application Details

WB: 1:500-1:1,000 IHC: 1:50-1:200

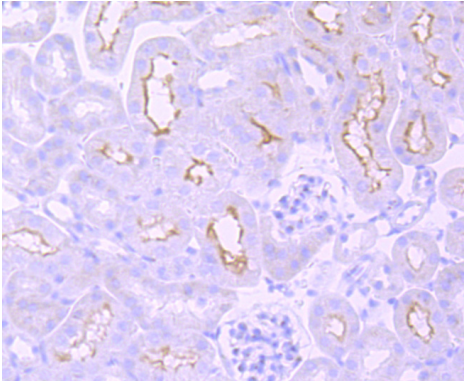
Images



Western blot analysis of mGluR1 on rat brain cells lysates using anti-mGluR1 antibody at 1/500 dilution.



Immunohistochemical analysis of paraffin-embedded mouse brain tissue using anti-mGluR1 antibody. Counter stained with hematoxylin.



Immunohistochemical analysis of paraffin-embedded mouse kidney tissue using anti-mGluR1 antibody. Counter stained with hematoxylin.

Background

G-protein coupled receptor for glutamate. Ligand binding causes a conformation change that triggers signaling via guanine nucleotide-binding proteins (G proteins) and modulates the activity of down-stream effectors. Signaling activates a phosphatidylinositol-calcium second messenger system. May participate in the central action of glutamate in the CNS, such as long-term potentiation in the hippocampus and long-term depression in the cerebellum.

References

Note: This product is for in vitro research use only