

Choline Acetyltransferase Rabbit mAb

Catalog No: #49528

Package Size: #49528-1 50ul #49528-2 100ul

Orders: order@signalwayantibody.com

Support: tech@signalwayantibody.com

Description

Product Name	Choline Acetyltransferase Rabbit mAb
Clone No.	JA67-11
Purification	Affinity-chromatography
Applications	WB, IP, ICC/IF, IHC, FC
Species Reactivity	Hu, Ms, Rt
Immunogen Description	A synthesized peptide derived from human CHAT
Other Names	Acetyl CoA choline O acetyltransferase antibody Acetyl CoA:choline O acetyltransferase antibody ChAT antibody CHOACTase antibody Choline acetylase antibody choline acetyltransferase antibody Choline O acetyltransferase antibody Choline O-acetyltransferase antibody CLAT_HUMAN antibody CMS1A antibody CMS1A2 antibody EC 2.3.1.6 antibody OTTHUMP00000019583 antibody OTTHUMP00000019584 antibody
Accession No.	Swiss-Prot#:P28329
Uniprot	P28329
GeneID	1103;
Calculated MW	82 kDa
Formulation	Rabbit IgG in 10mM phosphate buffered saline , pH 7.4, 150mM sodium chloride, 0.05% BSA, 0.02% sodium azide and 50% glycerol.
Storage	Store at +4°C for short term. Store at -20°C for long term. Avoid freeze/thaw cycle.

Application Details

WB 1:1000-1:2000

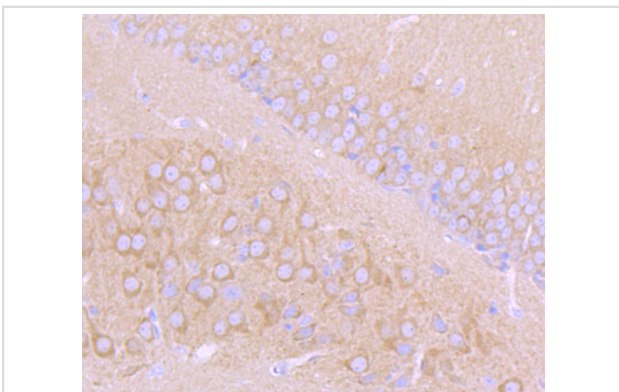
IHC 1:100-1:200

ICC/IF 1:50-1:200

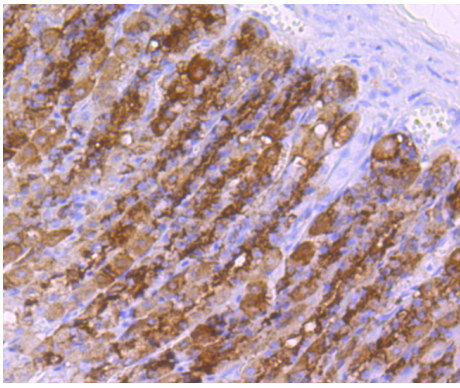
IP 1:20-1:50

FC 1:20-1:100

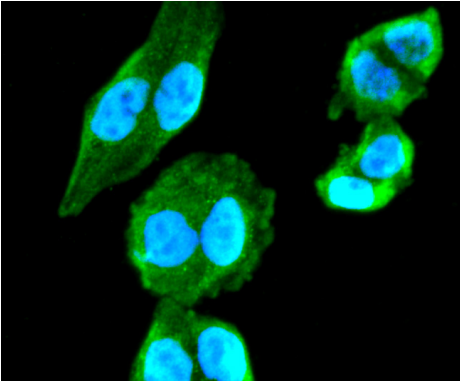
Images



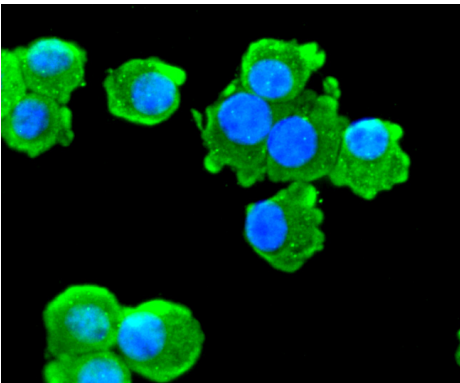
Immunohistochemical analysis of paraffin-embedded mouse brain tissue using anti- Choline Acetyltransferase antibody. Counter stained with hematoxylin.



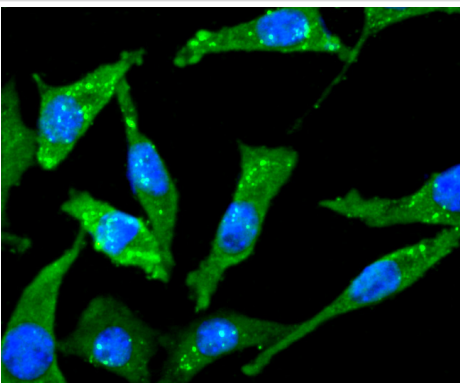
Immunohistochemical analysis of paraffin-embedded rat stomach tissue using anti- Choline Acetyltransferase antibody. Counter stained with hematoxylin.



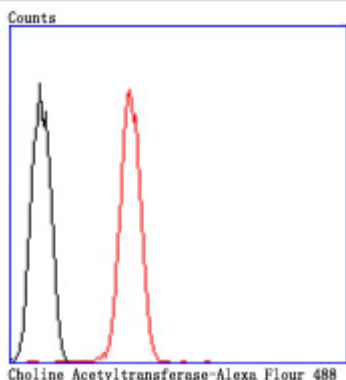
ICC staining Choline Acetyltransferase in HeLa cells (green). The nuclear counter stain is DAPI (blue). Cells were fixed in paraformaldehyde, permeabilised with 0.25% Triton X100/PBS.



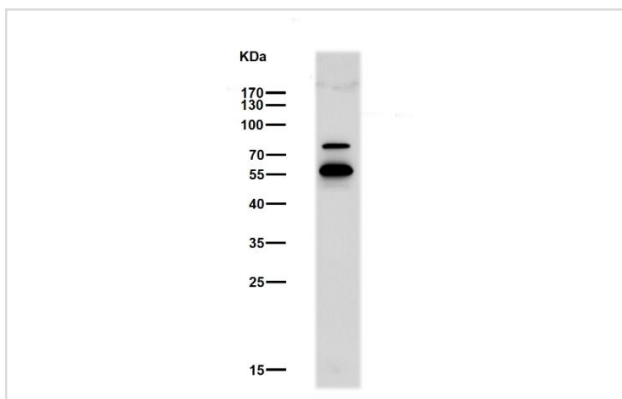
ICC staining Choline Acetyltransferase in N2A cells (green). The nuclear counter stain is DAPI (blue). Cells were fixed in paraformaldehyde, permeabilised with 0.25% Triton X100/PBS.



ICC staining Choline Acetyltransferase in SH-SY5Y cells (green). The nuclear counter stain is DAPI (blue). Cells were fixed in paraformaldehyde, permeabilised with 0.25% Triton X100/PBS.



Flow cytometric analysis of N2A cells with Choline Acetyltransferase antibody at 1/50 dilution (red) compared with an unlabelled control (cells without incubation with primary antibody; black). Alexa Fluor 488-conjugated goat anti rabbit IgG was used as the secondary antibody.



Lane1 Mouse brain tissue lysate
Use the Antibody at 1:2K dilution for 1 hour at room temperature.

Background

Catalyzes the reversible synthesis of acetylcholine (ACh) from acetyl CoA and choline at cholinergic synapses.

Note: This product is for in vitro research use only