

ADFP Rabbit mAb

Catalog No: #49529

Package Size: #49529-1 50ul #49529-2 100ul

Orders: order@signalwayantibody.com

Support: tech@signalwayantibody.com

Description

Product Name	ADFP Rabbit mAb
Clone No.	JA31-81
Purification	ProA affinity purified
Applications	WB, ICC/IF, FC
Species Reactivity	Hu, Ms, Rt
Immunogen Description	recombinant protein
Other Names	ADFP antibody Adipophilin antibody Adipose differentiation related protein antibody Adipose differentiation-related protein antibody ADRP antibody MGC10598 antibody Perilipin-2 antibody PLIN2 antibody PLIN2_HUMAN antibody
Accession No.	Swiss-Prot#:Q99541
Uniprot	Q99541
GeneID	123;
Calculated MW	48 kDa
Concentration	1.5mg/ml
Formulation	1*TBS (pH7.4), 1%BSA, 40%Glycerol. Preservative: 0.05% Sodium Azide.
Storage	Store at -20°C

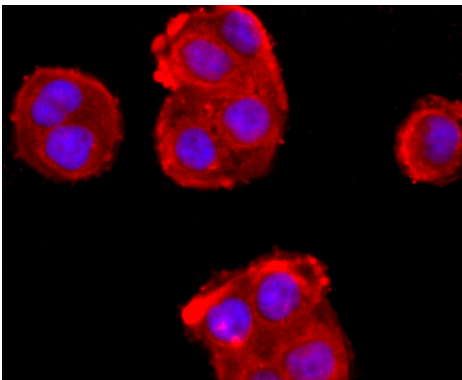
Application Details

WB: 1:500-1:1,000

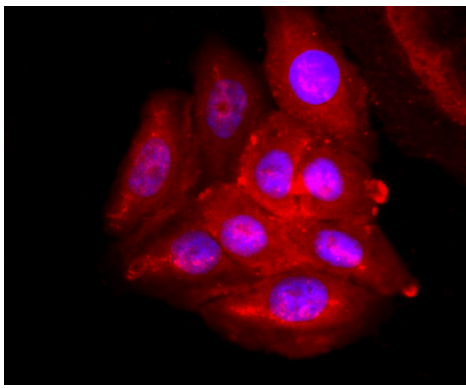
ICC: 1:50-1:200

FC: 1:50-1:100

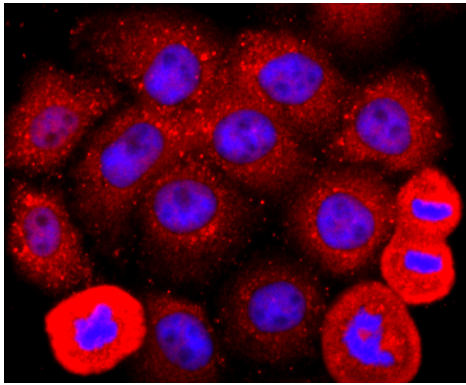
Images



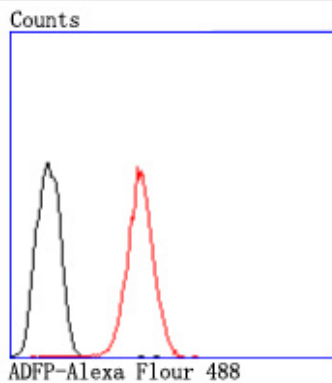
ICC staining ADFP in HeLa cells (red). The nuclear counter stain is DAPI (blue). Cells were fixed in paraformaldehyde, permeabilised with 0.25% Triton X100/PBS.



ICC staining ADFP in HepG2 cells (red). The nuclear counter stain is DAPI (blue). Cells were fixed in paraformaldehyde, permeabilised with 0.25% Triton X100/PBS.



ICC staining ADFP in JAR cells (red). The nuclear counter stain is DAPI (blue). Cells were fixed in paraformaldehyde, permeabilised with 0.25% Triton X100/PBS.



Flow cytometric analysis of HeLa cells with ADFP antibody at 1/50 dilution (red) compared with an unlabelled control (cells without incubation with primary antibody; black). Alexa Fluor 488-conjugated goat anti rabbit IgG was used as the secondary antibody.

Background

May be involved in development and maintenance of adipose tissue.

Note: This product is for in vitro research use only