

CD56 Polyclonal Antibody

Catalog No: #41561

Package Size: #41561-1 50ul #41561-2 100ul

Orders: order@signalwayantibody.com

Support: tech@signalwayantibody.com

Description

Product Name	CD56 Polyclonal Antibody
Host Species	Rabbit
Clonality	Polyclonal
Purification	The antibody was affinity-purified from rabbit antiserum by affinity-chromatography using epitope-specific immunogen.
Applications	WB ELISA
Species Reactivity	Hu
Specificity	CD56 Polyclonal Antibody detects endogenous levels of CD56 protein.
Immunogen Type	peptide
Immunogen Description	Synthesized peptide derived from the Internal region of human CD56.
Target Name	CD56
Other Names	NCAM1; NCAM; Neural cell adhesion molecule 1; N-CAM-1; NCAM-1; CD56
Accession No.	Swiss-Prot: P13591NCBI Gene ID: 4684
Uniprot	P13591
GeneID	4684;
SDS-PAGE MW	95kd
Concentration	1mg/ml
Formulation	Liquid in PBS containing 50% glycerol, 0.5% BSA and 0.02% sodium azide.
Storage	Store at -20°C/1 year

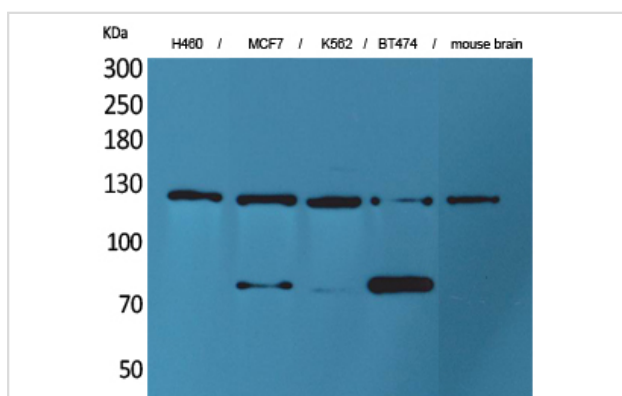
Application Details

Western Blot: 1/500 - 1/2000.

ELISA: 1/20000.

Not yet tested in other applications.

Images



Western Blot analysis of H460 MCF7 K562 BT474 mouse brain cells using CD56 Polyclonal Antibody

Note: This product is for in vitro research use only