

RFP Rabbit mAb

Catalog No: #49533

Package Size: #49533-1 50ul #49533-2 100ul

Orders: order@signalwayantibody.comSupport: tech@signalwayantibody.com

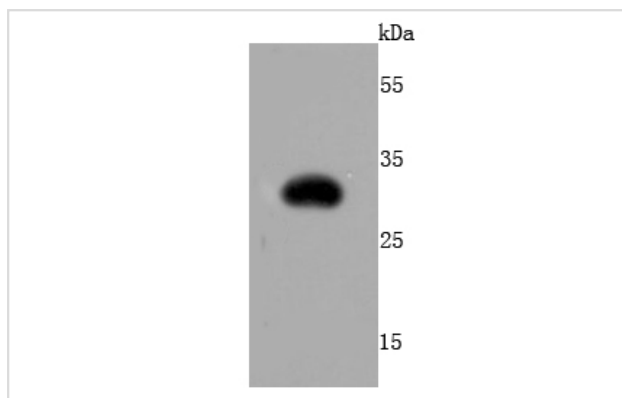
Description

Product Name	RFP Rabbit mAb
Host Species	Recombinant Rabbit
Clonality	Monoclonal antibody
Clone No.	JA10-52
Purification	ProA affinity purified
Applications	WB, ICC/IF
Species Reactivity	All
Immunogen Description	recombinant protein
Other Names	DsRed antibody GFP like chromoprotein antibody red fluorescent protein antibody RFP antibody
Accession No.	Swiss-Prot#:Q8ISF8
Uniprot	Q8ISF8
Calculated MW	26 kDa
Formulation	1*TBS (pH7.4), 1%BSA, 40%Glycerol. Preservative: 0.05% Sodium Azide.
Storage	Store at -20°C

Application Details

WB: 1:500-1:2,000 ICC: 1:50-1:200

Images



Western blot analysis of RFP on RFP recombinant protein using anti-RFP antibody at 1/500 dilution.

Background

Red fluorescent protein cloned from *Entacmaea quadricolor* eqFP611 (Uniprot IDQ8ISF8) is an important tool in biotechnology and cell biology as a spectrally distinct companion or substitute for the green fluorescent protein (GFP; from *Aequorea* jellyfish).

References

Note: This product is for in vitro research use only