

CaMKII delta Rabbit mAb

Catalog No: #49547

Package Size: #49547-1 50ul #49547-2 100ul

Orders: order@signalwayantibody.com

Support: tech@signalwayantibody.com

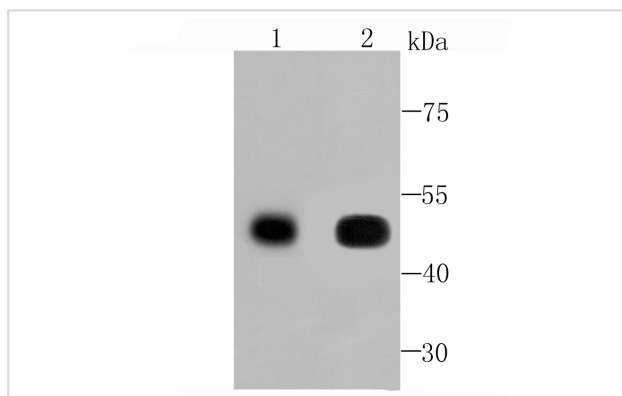
Description

Product Name	CaMKII delta Rabbit mAb
Host Species	Recombinant Rabbit
Clonality	Monoclonal antibody
Purification	ProA affinity purified
Applications	WB, IHC
Species Reactivity	Hu, Ms, Rt, Zebrafish
Immunogen Description	recombinant protein
Other Names	Calcium / calmodulin dependent protein kinase 2 delta antibody Calcium / calmodulin dependent protein kinase II delta antibody calcium/calmodulin-dependent protein kinase (CaM kinase) II delta antibody calcium/calmodulin-dependent protein kinase type II delta chain antibody Calcium/calmodulin-dependent protein kinase type II subunit delta antibody CAM kinase 2 delta antibody CAM kinase II delta antibody CaM kinase II delta subunit antibody CaM kinase II subunit delta antibody CaM-kinase II delta chain antibody CAMK 2d antibody CaMK-II delta subunit antibody CaMK-II subunit delta antibody CAMK2D antibody CAMKD antibody CAMKI antibody KCC2D_HUMAN antibody RATCAMKI antibody
Accession No.	Swiss-Prot#:Q13557
Uniprot	Q13557
GeneID	817;
Calculated MW	50 kDa
Formulation	1*TBS (pH7.4), 1%BSA, 40%Glycerol. Preservative: 0.05% Sodium Azide.
Storage	Store at -20°C

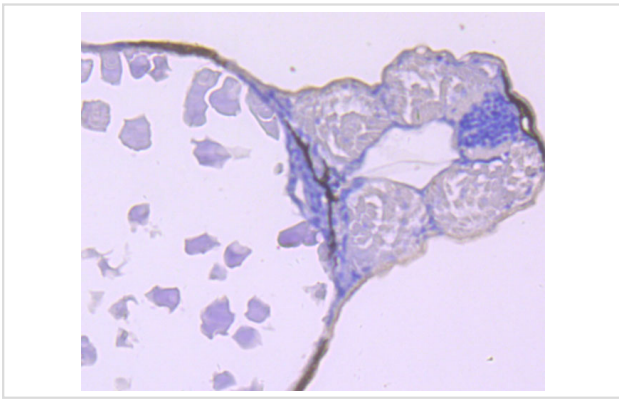
Application Details

WB: 1:500-1:2,000 IHC: 1:50-1:200

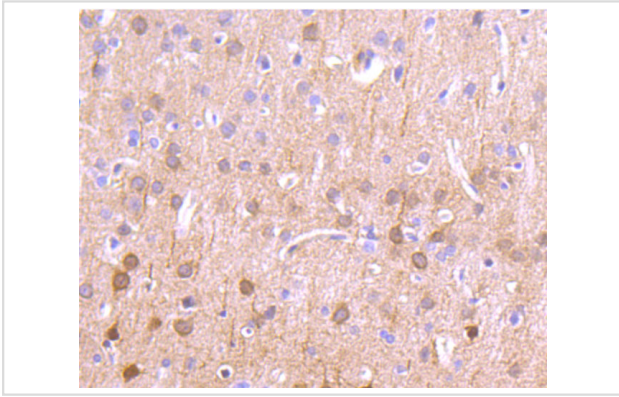
Images



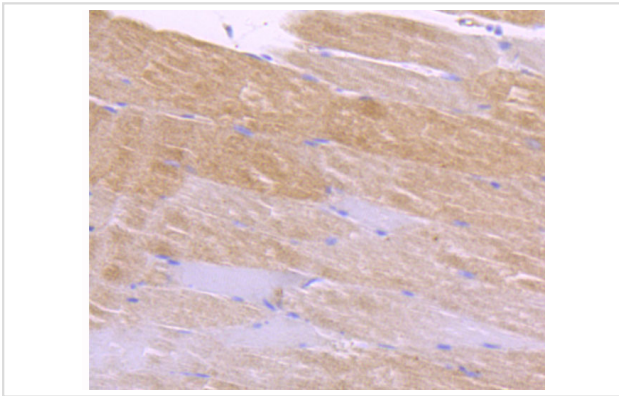
Western blot analysis of CaMKII delta on Human skeletal muscle (1) and Rat heart (2) cells lysates using anti-CaMKII delta antibody at 1/500 dilution.



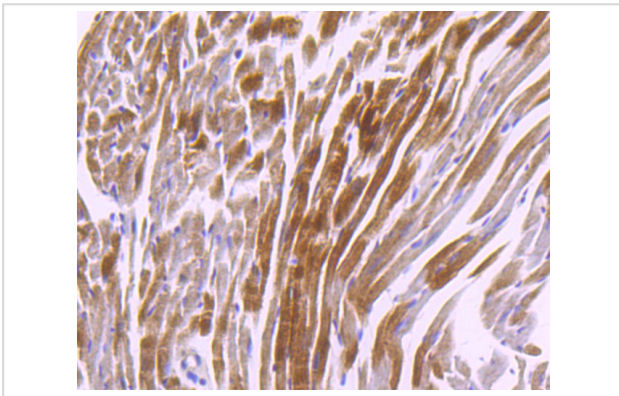
Immunohistochemical analysis of paraffin-embedded zebrafish tissue using anti-CaMKII delta antibody. Counter stained with hematoxylin.



Immunohistochemical analysis of paraffin-embedded rat brain tissue using anti-CaMKII delta antibody. Counter stained with hematoxylin.



Immunohistochemical analysis of paraffin-embedded mouse skeletal muscle tissue using anti-CaMKII delta antibody. Counter stained with hematoxylin.



Immunohistochemical analysis of paraffin-embedded mouse heart tissue using anti-CaMKII delta antibody. Counter stained with hematoxylin.

Background

Calcium/calmodulin-dependent protein kinase involved in the regulation of Ca²⁺ homeostasis and excitation-contraction coupling (ECC) in heart by targeting ion channels, transporters and accessory proteins involved in Ca²⁺ influx into the myocyte, Ca²⁺ release from the sarcoplasmic reticulum (SR), SR Ca²⁺ uptake and Na⁺ and K⁺ channel transport. Targets also transcription factors and signaling molecules to regulate heart function. In its activated form, is involved in the pathogenesis of dilated cardiomyopathy and heart failure. Regulates Ca²⁺ influx to myocytes by binding and phosphorylating the L-type Ca²⁺ channel subunit beta-2 CACNB2. In addition to Ca²⁺ channels, can target and regulate the cardiac sarcolemmal Na channel Nav1.5/SCN5A and the K⁺ channel Kv4.3/KCND3, which contribute to arrhythmogenesis in heart failure. Phosphorylates phospholamban (PLN/PLB), an endogenous inhibitor of SERCA2A/ATP2A2, contributing to the enhancement of SR Ca²⁺ uptake that may be important in frequency-dependent acceleration of

relaxation (FDAR) and maintenance of contractile function during acidosis.

References

Note: This product is for in vitro research use only