

## IKK gamma Rabbit mAb

Catalog No: #49550

Package Size: #49550-1 50ul #49550-2 100ul

Orders: order@signalwayantibody.com

Support: tech@signalwayantibody.com

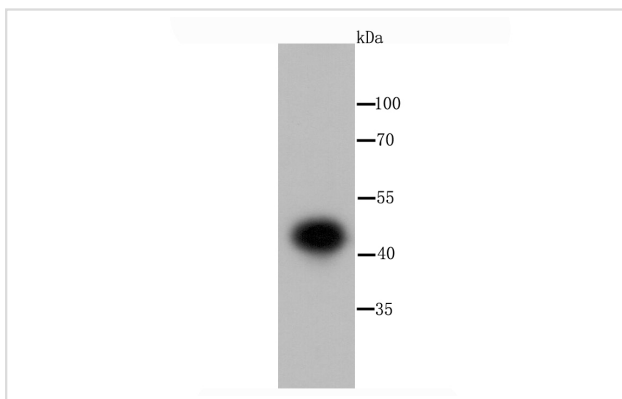
## Description

Product Name	IKK gamma Rabbit mAb
Host Species	Recombinant Rabbit
Clonality	Monoclonal antibody
Clone No.	JA11-83
Purification	ProA affinity purified
Applications	WB, IHC, ICC/IF, IP, FC
Species Reactivity	Hu, Ms, Rt
Immunogen Description	recombinant protein
Other Names	IkB kinase associated protein 1 antibody IkB kinase subunit gamma antibody Inhibitor of nuclear factor kappa B kinase subunit gamma antibody AMCBX1 antibody FIP 3 antibody FIP-3 antibody FIP3 antibody Fip3p antibody I kappa B kinase gamma antibody I-kappa-B kinase subunit gamma antibody IkB kinase gamma subunit antibody IkB kinase subunit gamma antibody IkB kinase-associated protein 1 antibody Ikbkg antibody IKK-gamma antibody IKKAP1 antibody IKKG antibody IMD33 antibody Incontinentia pigmenti antibody Inhibitor of kappa light polypeptide gene enhancer in B cells, kinase gamma antibody Inhibitor of kappa light polypeptide gene enhancer in B cells, kinase of, gamma antibody Inhibitor of nuclear factor kappa-B kinase subunit gamma antibody IP antibody IP1 antibody IP2 antibody IPD2 antibody NEMO antibody NEMO_HUMAN antibody NF kappa B essential modifier antibody NF kappa B essential modulator antibody NF-kappa-B essential modifier antibody NF-kappa-B essential modulator antibody ZC2HC9 antibody
Accession No.	Swiss-Prot#:Q9Y6K9
Uniprot	Q9Y6K9
GeneID	8517;
Calculated MW	48 kDa
Formulation	1*TBS (pH7.4), 1%BSA, 40%Glycerol. Preservative: 0.05% Sodium Azide.
Storage	Store at -20°C

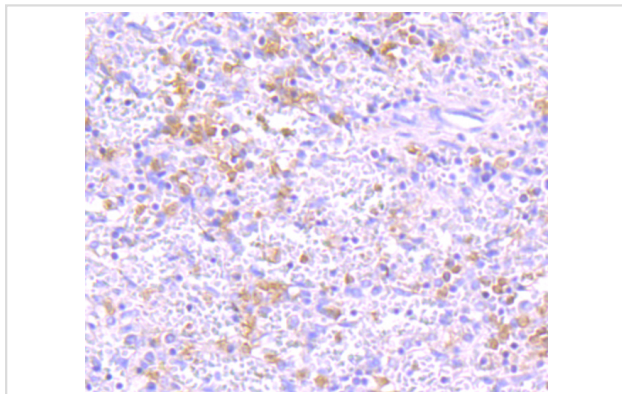
## Application Details

WB: 1:500-1:2,000 IHC: 1:20-1:50 ICC: 1:50-1:200FC: 1:50-1:100

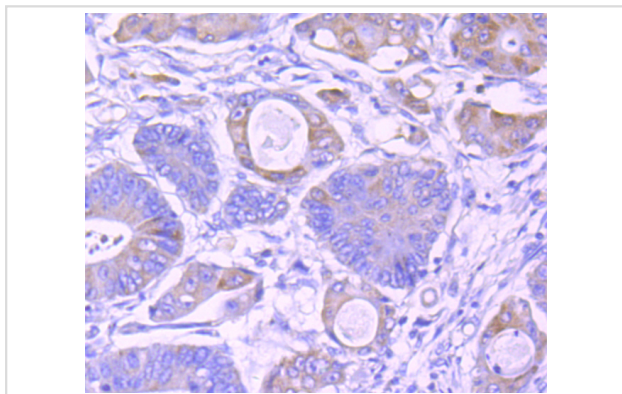
## Images



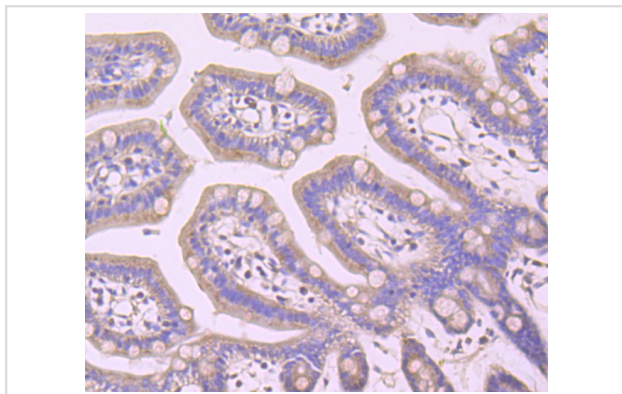
Western blot analysis of IKK gamma on Hela cell using anti-IKK gamma antibody at 1/1,000 dilution.



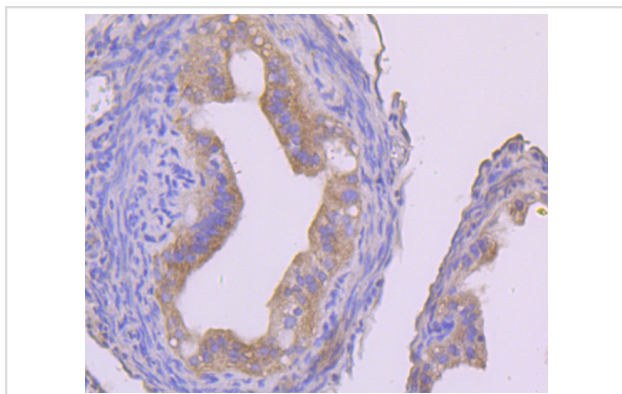
Immunohistochemical analysis of paraffin-embedded human spleen tissue using anti-IKK gamma antibody. Counter stained with hematoxylin.



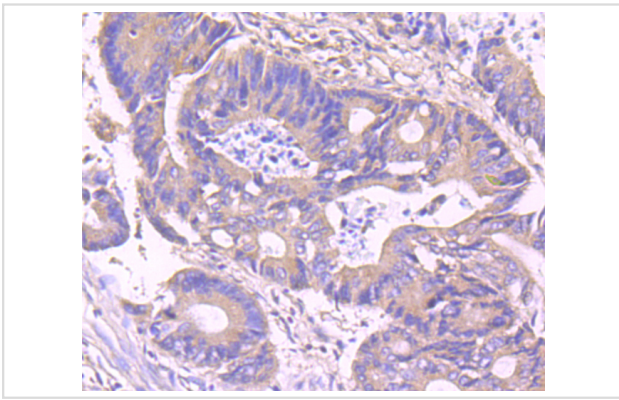
Immunohistochemical analysis of paraffin-embedded human colon cancer tissue using anti-IKK gamma antibody. Counter stained with hematoxylin.



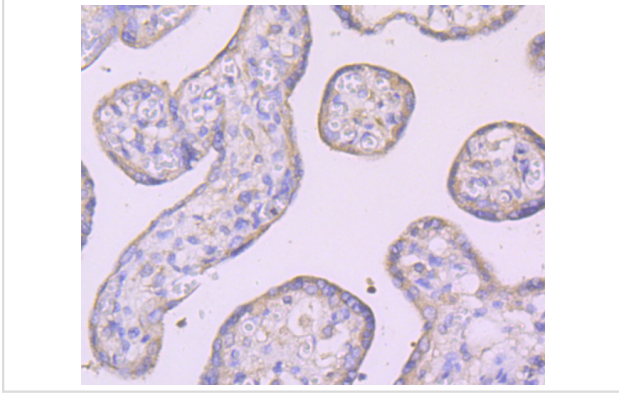
Immunohistochemical analysis of paraffin-embedded mouse colon tissue using anti-IKK gamma antibody. Counter stained with hematoxylin.



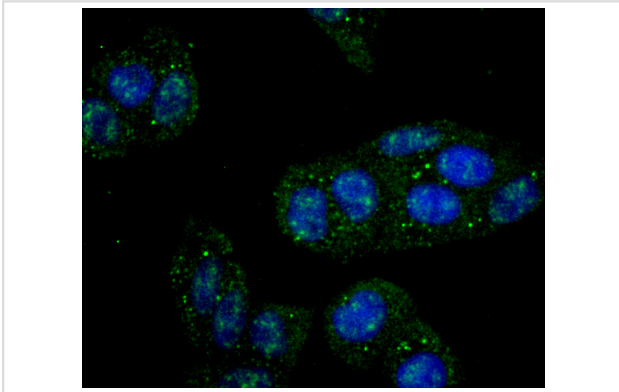
Immunohistochemical analysis of paraffin-embedded mouse fallopian tube tissue using anti-IKK gamma antibody. Counter stained with hematoxylin.



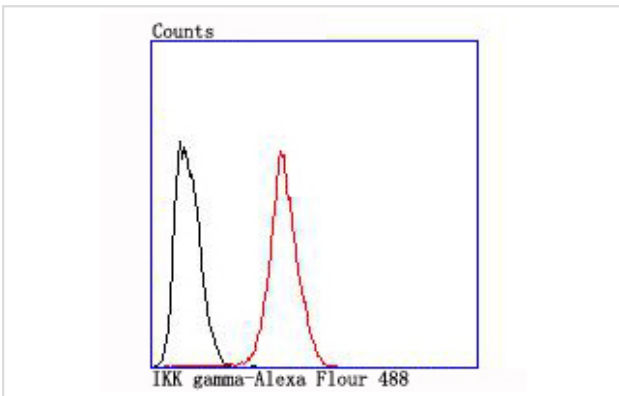
Immunohistochemical analysis of paraffin-embedded human colon tissue using anti-IKK gamma antibody. Counter stained with hematoxylin.



Immunohistochemical analysis of paraffin-embedded human placenta tissue using anti-IKK gamma antibody. Counter stained with hematoxylin.



ICC staining IKK gamma in HeLa cells (green). The nuclear counter stain is DAPI (blue). Cells were fixed in paraformaldehyde, permeabilised with 0.25% Triton X100/PBS.



Flow cytometric analysis of HeLa cells with IKK gamma antibody at 1/100 dilution (red) compared with an unlabelled control (cells without incubation with primary antibody; black).

## Background

Regulatory subunit of the IKK core complex which phosphorylates inhibitors of NF-kappa-B thus leading to the dissociation of the inhibitor/NF-kappa-B complex and ultimately the degradation of the inhibitor. Its binding to scaffolding polyubiquitin seems to play a role in IKK activation by multiple signaling receptor pathways. However, the specific type of polyubiquitin recognized upon cell stimulation (either 'Lys-63'-linked or linear polyubiquitin) and its functional importance is reported conflictingly. Also considered to be a mediator for TAX activation of NF-kappa-B. Could be implicated in NF-kappa-B-mediated protection from cytokine toxicity. Essential for viral activation of IRF3. Involved in TLR3- and IFIH1-mediated antiviral innate response; this function requires 'Lys-27'-linked polyubiquitination.

## References

---

Note: This product is for in vitro research use only