

CD163 Rabbit mAb

Catalog No: #49553

Package Size: #49553-1 50ul #49553-2 100ul

Orders: order@signalwayantibody.com

Support: tech@signalwayantibody.com

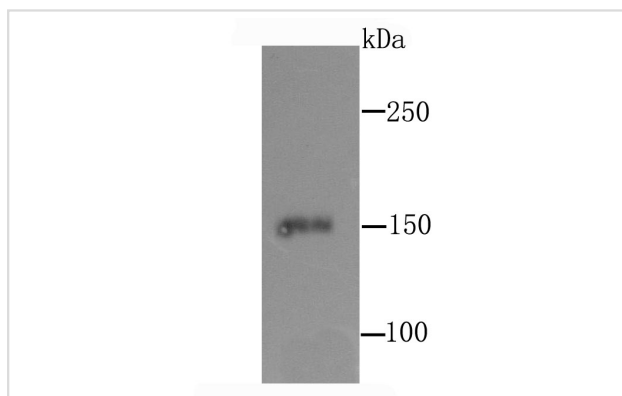
Description

Product Name	CD163 Rabbit mAb
Host Species	Recombinant Rabbit
Clonality	Monoclonal antibody
Clone No.	JA51-30
Purification	ProA affinity purified
Applications	WB, IHC, IP, FC
Species Reactivity	Hu
Immunogen Description	recombinant protein
Other Names	C163A_HUMAN antibody CD 163 antibody CD163 antibody CD163 antigen antibody CD163 molecule antibody Hemoglobin scavenger receptor antibody M130 antibody M130 antigen precursor antibody Macrophage associated antigen antibody MM130 antibody OTTHUMP00000238617 antibody OTTHUMP00000238618 antibody OTTHUMP00000238619 antibody OTTHUMP00000238620 antibody SCAR11 antibody Scavenger receptor cysteine rich type 1 protein M130 antibody sCD163 antibody Soluble CD163 antibody
Accession No.	Swiss-Prot#:Q86VB7
Uniprot	Q86VB7
GeneID	9332;
Calculated MW	150 kDa
Formulation	1*TBS (pH7.4), 1%BSA, 40%Glycerol. Preservative: 0.05% Sodium Azide.
Storage	Store at -20°C

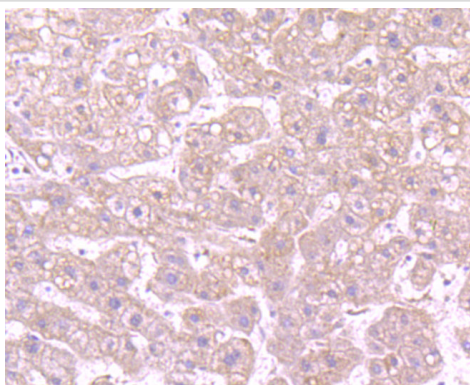
Application Details

WB: 1:500-1:2,000 IHC: 1:50-1:200 FC: 1:50-1:100

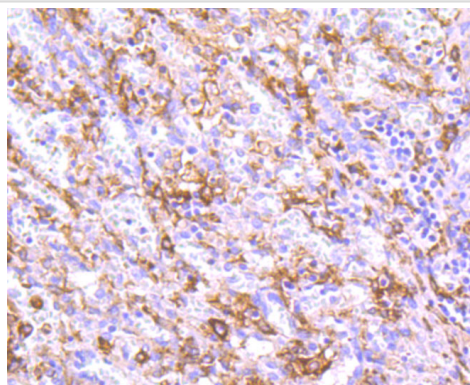
Images



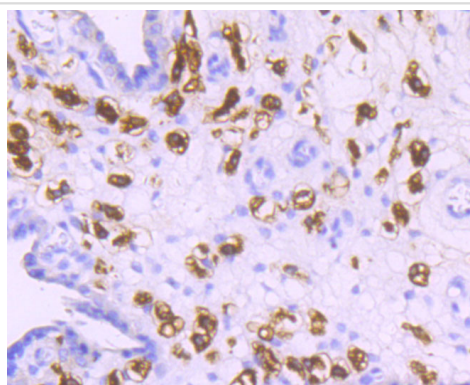
Western blot analysis of CD163 on human thymus tissue lysate using anti-CD163 antibody at 1/1,000 dilution.



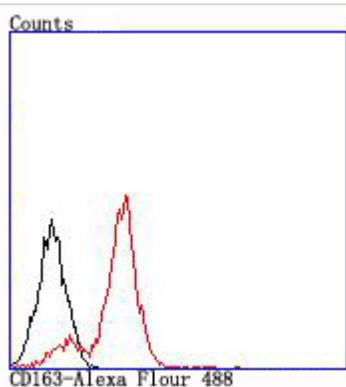
Immunohistochemical analysis of paraffin-embedded human liver tissue using anti-CD163 antibody. Counter stained with hematoxylin.



Immunohistochemical analysis of paraffin-embedded human spleen tissue using anti-CD163 antibody. Counter stained with hematoxylin.



Immunohistochemical analysis of paraffin-embedded human placenta tissue using anti-CD163 antibody. Counter stained with hematoxylin.



Flow cytometric analysis of THP-1 cells with CD163 antibody at 1/100 dilution (red) compared with an unlabelled control (cells without incubation with primary antibody; black).

Background

CD163, also designated M130, is a macrophage-associated antigen that is a member of the scavenger receptor cysteine-rich (SRCR) superfamily. It is highly expressed on macrophages and to a lesser extent on monocytes. The acute phase-regulated and signal-inducing macrophage protein, CD163, is a receptor that scavenges hemoglobin by mediating endocytosis of haptoglobin-hemoglobin complexes. CD163 binds only haptoglobin and hemoglobin in complex, which indicates the exposure of a receptor-binding neoepitope. The receptor-ligand interaction is calcium-dependent and of high affinity. The existence of several CD163 isoforms, which differ in the structure of their cytoplasmic domains and putative phosphorylation sites, suggests that these isoforms also differ in their signaling mechanism. The gene which encodes CD163 maps to human chromosome 12p13.31.

References

Note: This product is for in vitro research use only