

## Leptin Receptor Rabbit mAb

Catalog No: #49554

Package Size: #49554-1 50ul #49554-2 100ul

Orders: [order@signalwayantibody.com](mailto:order@signalwayantibody.com)Support: [tech@signalwayantibody.com](mailto:tech@signalwayantibody.com)

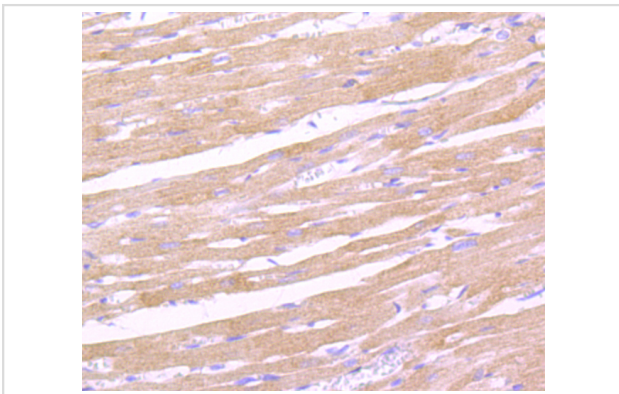
## Description

Product Name	Leptin Receptor Rabbit mAb
Host Species	Recombinant Rabbit
Clonality	Monoclonal antibody
Clone No.	JA73-01
Purification	ProA affinity purified
Applications	WB, ICC, IHC, FC
Species Reactivity	Hu, Ms, Rt
Immunogen Description	recombinant protein
Other Names	CD 295 antibody CD295 antibody CD295 antigen antibody Db antibody Fa antibody HuB219 antibody LEP R antibody LEP-R antibody LEPR antibody LEPR_HUMAN antibody LEPRD antibody Leptin receptor antibody Leptin receptor fatty antibody Leptin receptor gene related protein antibody Leptin receptor precursor antibody Leptin receptor precursor antibody OB R gene related protein antibody OB receptor antibody OB-R antibody OB-RGRP antibody obl antibody Obr antibody
Accession No.	Swiss-Prot#:P48357
Uniprot	P48357
GeneID	3953;
Calculated MW	132 kDa
Formulation	1*TBS (pH7.4), 1%BSA, 40%Glycerol. Preservative: 0.05% Sodium Azide.
Storage	Store at -20°C

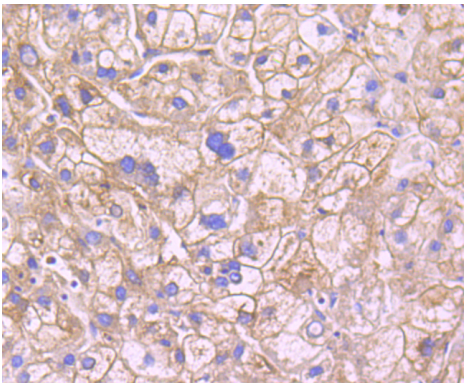
## Application Details

FC: 1:50-1:100

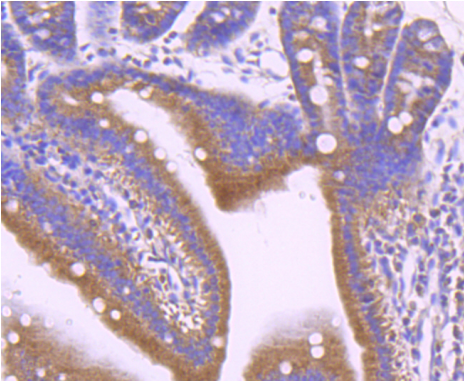
## Images



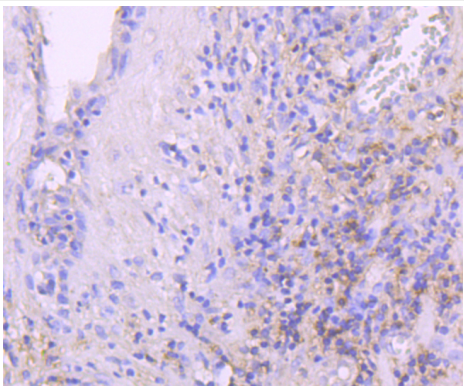
Immunohistochemical analysis of paraffin-embedded rat heart tissue using anti-Leptin Receptor antibody. Counter stained with hematoxylin.



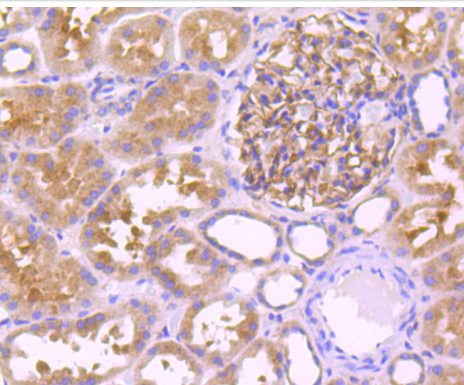
Immunohistochemical analysis of paraffin-embedded human liver cancer tissue using anti-Leptin Receptor antibody. Counter stained with hematoxylin.



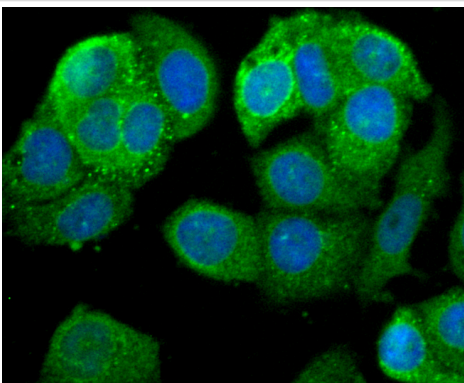
Immunohistochemical analysis of paraffin-embedded mouse small intestine tissue using anti-Leptin Receptor antibody. Counter stained with hematoxylin.



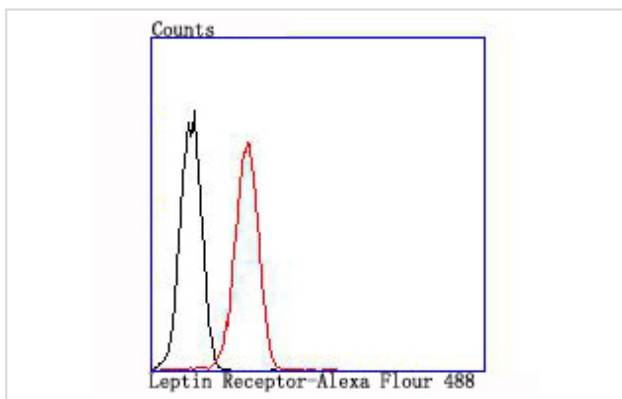
Immunohistochemical analysis of paraffin-embedded human prostate tissue using anti-Leptin Receptor antibody. Counter stained with hematoxylin.



Immunohistochemical analysis of paraffin-embedded human kidney tissue using anti-Leptin Receptor antibody. Counter stained with hematoxylin.



ICC staining Leptin Receptor in MCF-7 cells (green). The nuclear counter stain is DAPI (blue). Cells were fixed in paraformaldehyde, permeabilised with 0.25% Triton X100/PBS.



Flow cytometric analysis of K562 cells with Leptin Receptor antibody at 1/100 dilution (red) compared with an unlabelled control (cells without incubation with primary antibody; black).

## Background

Receptor for obesity factor (leptin). On ligand binding, mediates signaling through JAK2/STAT3. Involved in the regulation of fat metabolism and, in a hematopoietic pathway, required for normal lymphopoiesis. May play a role in reproduction. Can also mediate the ERK/FOS signaling pathway.

## References

Note: This product is for in vitro research use only