

Annexin A2 Rabbit mAb

Catalog No: #49559

Package Size: #49559-1 50ul #49559-2 100ul

Orders: order@signalwayantibody.com

Support: tech@signalwayantibody.com

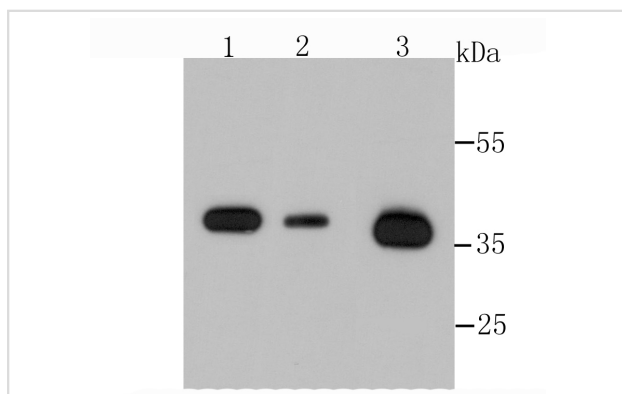
Description

Product Name	Annexin A2 Rabbit mAb
Host Species	Recombinant Rabbit
Clonality	Monoclonal antibody
Clone No.	JA42-30
Purification	ProA affinity purified
Applications	WB, IHC, ICC/IF, FC
Species Reactivity	Hu, Ms, Rt
Immunogen Description	recombinant protein
Other Names	Annexin A2 antibody Annexin II antibody Annexin II, heavy chain antibody Annexin-2 antibody ANX 2 antibody ANX2 antibody ANX2L4 antibody ANXA2 antibody ANXA2_HUMAN antibody arylsulfatase B antibody CAL1H antibody Calpactin I heavy chain antibody calpactin I heavy polypeptide (p36) antibody Calpactin I heavy polypeptide antibody Calpactin-1 heavy chain antibody chromobindin 8 antibody Chromobindin-8 antibody Epididymis secretory protein Li 270 antibody HEL S 270 antibody LIP2 antibody Lipocortin II antibody LPC2 antibody LPC2D antibody p36 antibody P36 protein antibody PAP-IV antibody Placental anticoagulant protein IV antibody Protein I antibody
Accession No.	Swiss-Prot#:P07355
Uniprot	P07355
GeneID	302;
Calculated MW	38 kDa
Formulation	1*TBS (pH7.4), 1%BSA, 40%Glycerol. Preservative: 0.05% Sodium Azide.
Storage	Store at -20°C

Application Details

WB: 1:500-1:2,000 IHC: 1:50-1:200 ICC:1:100-1:200 FC:1:50-1:200

Images

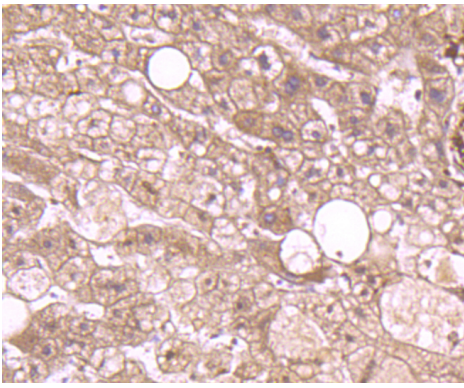


Western blot analysis of Annexin A2 on different cells lysates using anti-Annexin A2 antibody at 1/500 dilution. Positive control $\Omega\frac{1}{2}\Omega\frac{1}{2}$

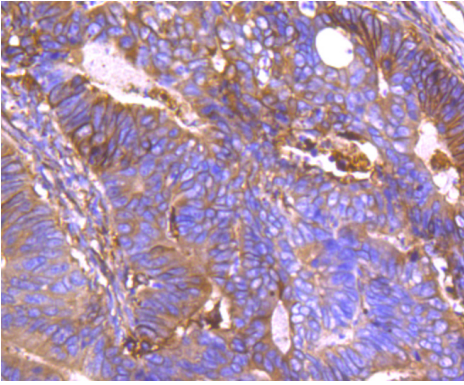
Lane 1: Hela

Lane 2: Human kidney

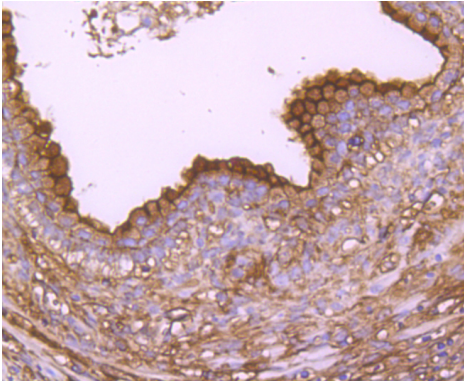
Lane 3: Murine testis



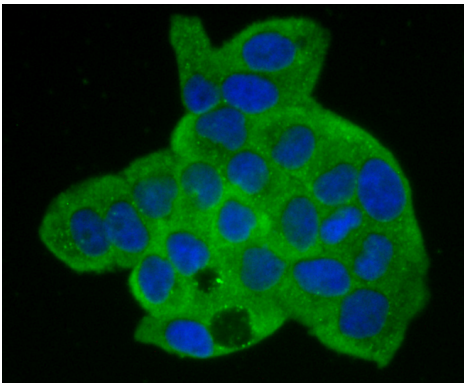
Immunohistochemical analysis of paraffin-embedded human liver tissue using anti-Annexin A2 antibody. Counter stained with hematoxylin.



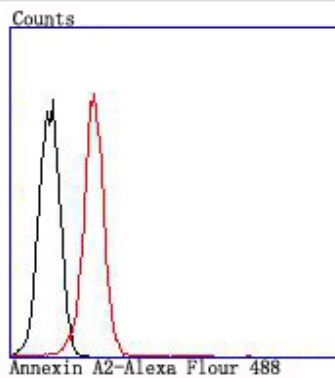
Immunohistochemical analysis of paraffin-embedded human colon cancer tissue using anti-Annexin A2 antibody. Counter stained with hematoxylin.



Immunohistochemical analysis of paraffin-embedded human prostate tissue using anti-Annexin A2 antibody. Counter stained with hematoxylin.



ICC staining Annexin A2 in HeLa cells (green). The nuclear counter stain is DAPI (blue). Cells were fixed in paraformaldehyde, permeabilised with 0.25% Triton X100/PBS.



Flow cytometric analysis of K562 cells with Annexin A2 antibody at 1/100 dilution (red) compared with an unlabelled control (cells without incubation with primary antibody; black).

Background

The annexin family of calcium-binding proteins is composed of at least ten mammalian genes and is characterized by a conserved core domain which binds phospholipids in a Ca²⁺-dependent manner and a unique amino-terminal region which may confer binding specificity. The interaction between these proteins and biological membranes has led to the hypothesis that they are involved in cellular trafficking processes such as endocytosis, exocytosis and cellular adhesion. Annexin I, alternatively referred to as lipocortin, has been implicated as a mediator of the anti-inflammatory response produced by glucocorticoids and as an inhibitor of cPLA₂, a potent mediator of inflammation. Annexin II, also called p36, exists as a monomer or as a heterotetramer, complexed with the S-100-related protein p11. This complex is termed calpactin I. In the tetrameric form, Annexin II is an efficient substrate of PKC family and Src pp60.

References

Note: This product is for in vitro research use only