

Aggrecan Rabbit mAb

Catalog No: #49565

Package Size: #49565-1 50ul #49565-2 100ul

Orders: order@signalwayantibody.comSupport: tech@signalwayantibody.com

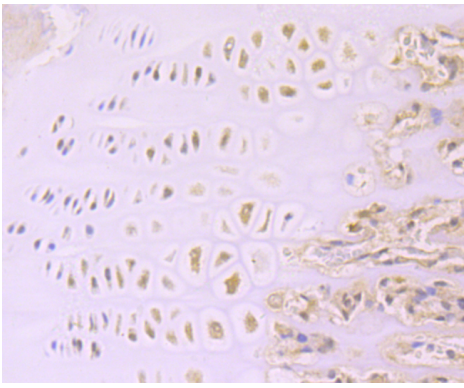
Description

Product Name	Aggrecan Rabbit mAb
Host Species	Recombinant Rabbit
Clonality	Monoclonal antibody
Clone No.	JA40-23
Purification	ProA affinity purified
Applications	IHC
Species Reactivity	Hu, Rt
Immunogen Description	recombinant protein
Other Names	ACAN antibody AGC 1 antibody AGC1 antibody AGCAN antibody Aggrecan 1 (chondroitin sulfate proteoglycan 1, large aggregating proteoglycan, antigen identified by monoclonal antibody A0122) antibody Aggrecan 1 antibody Aggrecan core protein antibody Aggrecan proteoglycan antibody Aggrecan structural proteoglycan of cartilage antibody Aggrecan1 antibody ATEGQV antibody Cartilage specific proteoglycan core protein antibody Chondroitin sulfate proteoglycan 1 antibody Chondroitin sulfate proteoglycan 1 large aggregating proteoglycan antigen identified by monoclonal antibody A0122 antibody Chondroitin sulfate proteoglycan core protein 1 antibody CSPG 1 antibody CSPG1 antibody CSPGCP antibody JSCATE antibody Large aggregating proteoglycan antibody mcspg antibody mgsk16 antibody MSK 16 antibody MSK16 antibody SEDK antibody
Accession No.	Swiss-Prot#:P16112
Uniprot	P16112
GeneID	176;
Calculated MW	250/246/239 kDa
Formulation	1*TBS (pH7.4), 1%BSA, 40%Glycerol. Preservative: 0.05% Sodium Azide.
Storage	Store at -20°C

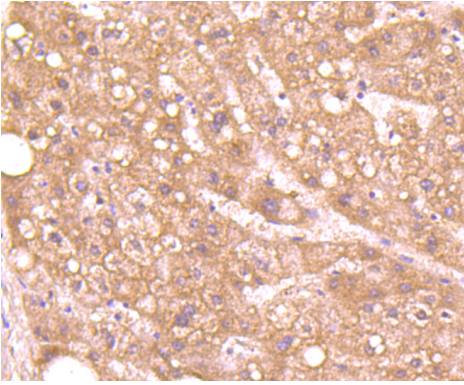
Application Details

IHC: 1:50-1:200

Images



Immunohistochemical analysis of paraffin-embedded rat cartilage tissue using anti-Aggrecan antibody. Counter stained with hematoxylin.



Immunohistochemical analysis of paraffin-embedded human liver tissue using anti-Aggrecan antibody. Counter stained with hematoxylin.

Background

The large chondroitin sulfate proteoglycan, aggrecan, is the predominant proteoglycan present in cartilage. Aggrecan is a member of the chondroitin sulphate proteoglycan family, which also includes versican/PG-M, neurocan and brevican. Aggrecan is a complex multidomain macromolecule that undergoes extensive processing and post-translational modification. Aggrecan in cartilage forms aggregates with hyaluronan and link protein, embedded in a collagen network. Aggrecan accounts for the compressive stiffness and resilience of the hyaline cartilage. Many forms of inflammatory arthritis are shown to be accompanied with aggrecan degradation and loss from the cartilage. Brevican is a brain proteoglycan of the aggrecan/versican/neurocan family. In the adult brain, the brevican core protein undergoes proteolytic cleavage and exists as a full-length form a carboxy-terminal fragment and an amino-terminal fragment.

References

Note: This product is for in vitro research use only