

## smooth muscle Myosin heavy chain 11 Rabbit mAb

Catalog No: #49569

Package Size: #49569-1 50ul #49569-2 100ul

Orders: order@signalwayantibody.com

Support: tech@signalwayantibody.com

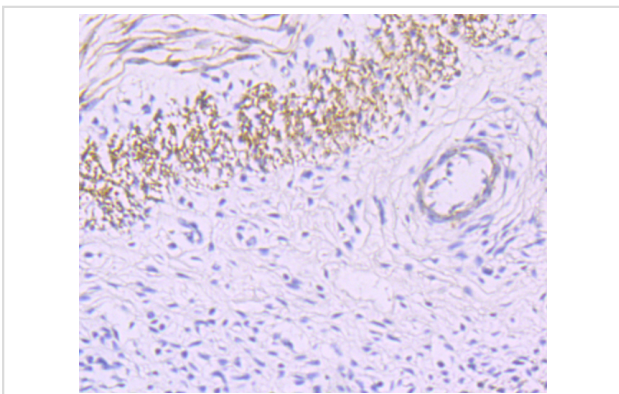
## Description

Product Name	smooth muscle Myosin heavy chain 11 Rabbit mAb
Host Species	Recombinant Rabbit
Clonality	Monoclonal antibody
Clone No.	JA03-35
Purification	ProA affinity purified
Applications	WB, IHC, ICC/IF
Species Reactivity	Hu, Rt
Immunogen Description	recombinant protein
Other Names	AAT4 antibody DKFZp686D10126 antibody DKFZp686D19237 antibody FAA4 antibody FLJ35232 antibody MGC126726 antibody MGC32963 antibody MYH 11 antibody MYH11 antibody MYH11_HUMAN antibody Myosin 11 antibody Myosin heavy chain 11 antibody Myosin heavy chain 11 smooth muscle antibody Myosin heavy chain antibody Myosin heavy chain smooth muscle isoform antibody Myosin heavy polypeptide 11 smooth muscle antibody Myosin-11 antibody SMHC antibody SMMHC antibody smooth muscle isoform antibody Smooth muscle myosin heavy chain 11 isoform SM2 antibody Smooth muscle myosin heavy chain isoform SM2 antibody
Accession No.	Swiss-Prot#:P35749
Uniprot	P35749
GeneID	4629;
Calculated MW	227 kDa
Formulation	1*TBS (pH7.4), 1%BSA, 40%Glycerol. Preservative: 0.05% Sodium Azide.
Storage	Store at -20°C

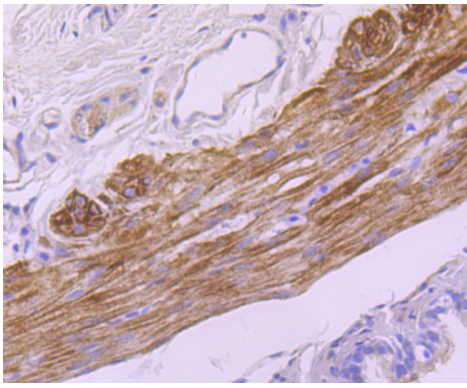
## Application Details

WB: 1:500-1:1,000 IHC: 1:50-1:200 ICC: 1:50-1:200FC: 1:50-1:100

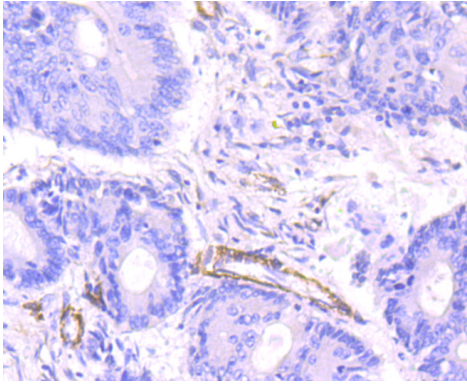
## Images



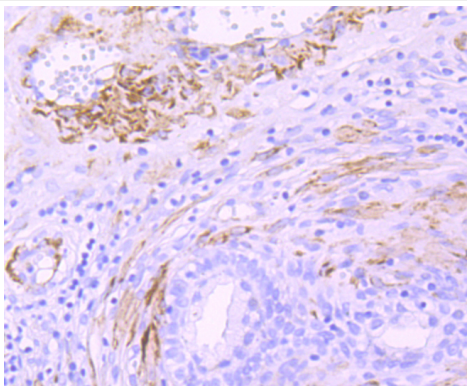
Immunohistochemical analysis of paraffin-embedded human jejunum tissue using anti-smooth muscle Myosin heavy chain 11 antibody. Counter stained with hematoxylin.



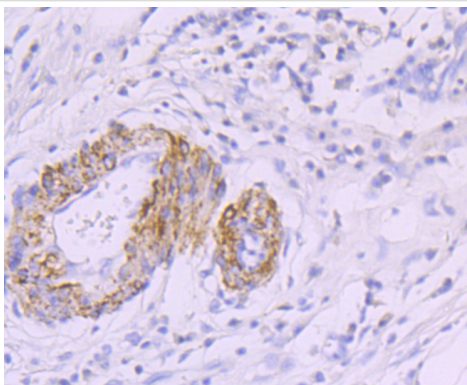
Immunohistochemical analysis of paraffin-embedded rat trachea tissue using anti-smooth muscle Myosin heavy chain 11 antibody. Counter stained with hematoxylin.



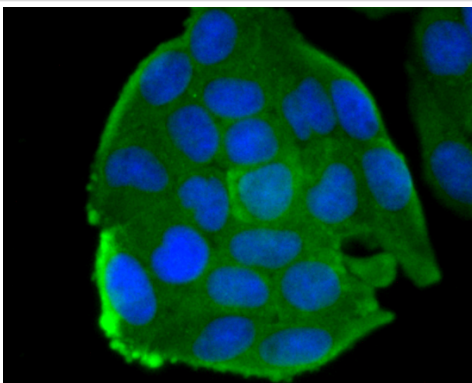
Immunohistochemical analysis of paraffin-embedded human colon tissue using anti-smooth muscle Myosin heavy chain 11 antibody. Counter stained with hematoxylin.



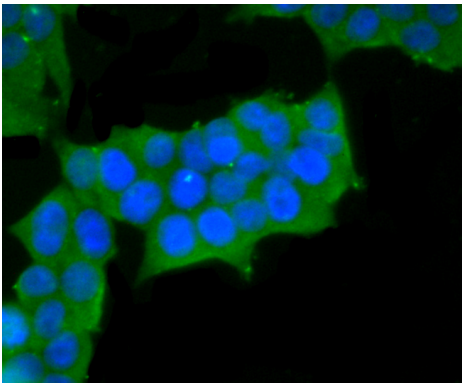
Immunohistochemical analysis of paraffin-embedded human prostate tissue using anti-smooth muscle Myosin heavy chain 11 antibody. Counter stained with hematoxylin.



Immunohistochemical analysis of paraffin-embedded human stomach cancer tissue using anti-smooth muscle Myosin heavy chain 11 antibody. Counter stained with hematoxylin.



ICC staining smooth muscle Myosin heavy chain 11 in HeLa cells (green). The nuclear counter stain is DAPI (blue). Cells were fixed in paraformaldehyde, permeabilised with 0.25% Triton X100/PBS.



ICC staining smooth muscle Myosin heavy chain 11 in 293T cells (green). The nuclear counter stain is DAPI (blue). Cells were fixed in paraformaldehyde, permeabilised with 0.25% Triton X100/PBS.

## Background

Myosin is a highly conserved, ubiquitously expressed protein that interacts with Actin to generate the force for cellular movements. Conventional Myosins are hexameric proteins consisting of two heavy chain subunits, a pair of non-phosphorylatable light chain subunits and a pair of phosphorylatable light chain subunits, which is expressed by my calcium and calmodulin-dependent phosphorylation of Myosin light chain (MLC) Myosin heavy chains, encoded by the MYH gene family, contain Actin-activated ATPase activity which generates the motor function of Myosin. Myosin heavy chains were initially isolated from a human fetal skeletal muscle and are the major determinant in the Speed of contraction of skeletal muscle. Various isoforms of myosin heavy chains are differentially expressed depending on the functional activity of the muscle.

## References

Note: This product is for in vitro research use only