

## GOLPH2 Rabbit mAb

Catalog No: #49571

Package Size: #49571-1 50ul #49571-2 100ul

Orders: [order@signalwayantibody.com](mailto:order@signalwayantibody.com)Support: [tech@signalwayantibody.com](mailto:tech@signalwayantibody.com)

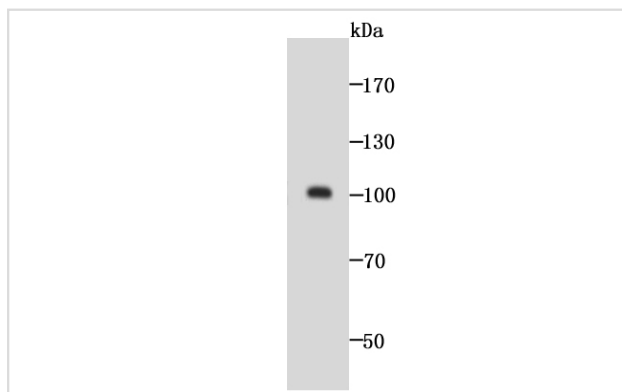
## Description

Product Name	GOLPH2 Rabbit mAb
Host Species	Recombinant Rabbit
Clonality	Monoclonal antibody
Clone No.	JA63-03
Purification	ProA affinity purified
Applications	WB, ICC, IHC, FC
Species Reactivity	Hu, Ms, Rt
Immunogen Description	recombinant protein
Other Names	bA379P1.3 antibody C9orf155 antibody Chromosome 9 open reading frame 155 antibody Golgi membrane protein 1 antibody Golgi membrane protein GP73 antibody Golgi phosphoprotein 2 antibody Golgi protein 73 kD antibody Golgi protein 73kD antibody GOLM 1 antibody GOLM1 antibody GOLM1_HUMAN antibody GOLPH 2 antibody GOLPH2 antibody GP 73 antibody GP73 antibody PSEC0257 antibody
Accession No.	Swiss-Prot#:Q8NBJ4
Uniprot	Q8NBJ4
GeneID	51280;
Calculated MW	100 kDa
Formulation	1*TBS (pH7.4), 1%BSA, 40%Glycerol. Preservative: 0.05% Sodium Azide.
Storage	Store at -20°C

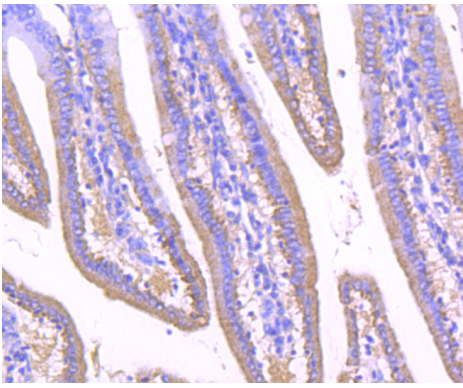
## Application Details

WB: 1:500-1:2,000 IHC: 1:50

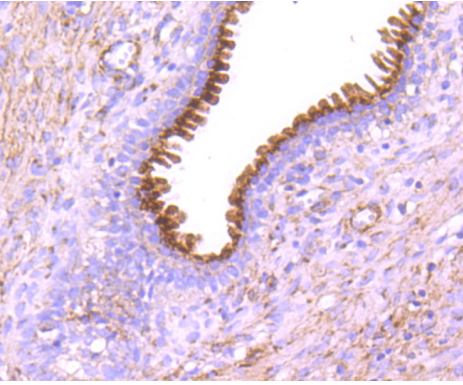
## Images



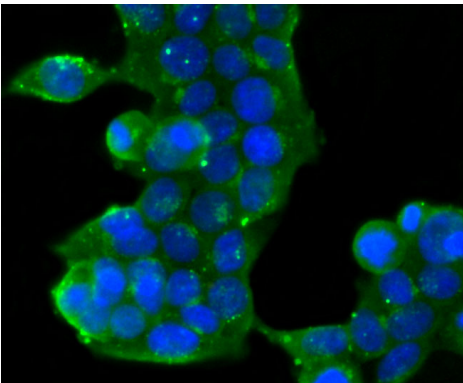
Western blot analysis of GOLPH2 on SH-SY5Y cell lysate using anti-GOLPH2 antibody at 1/1,000 dilution.



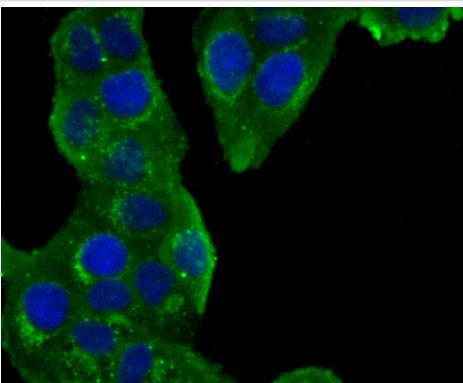
Immunohistochemical analysis of paraffin-embedded mouse small intestine tissue using anti-GOLPH2 antibody. Counter stained with hematoxylin.



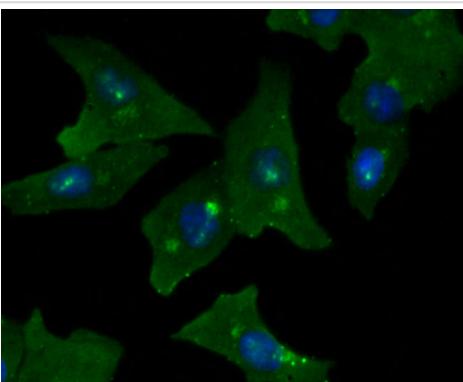
Immunohistochemical analysis of paraffin-embedded human prostate tissue using anti-GOLPH2 antibody. Counter stained with hematoxylin.



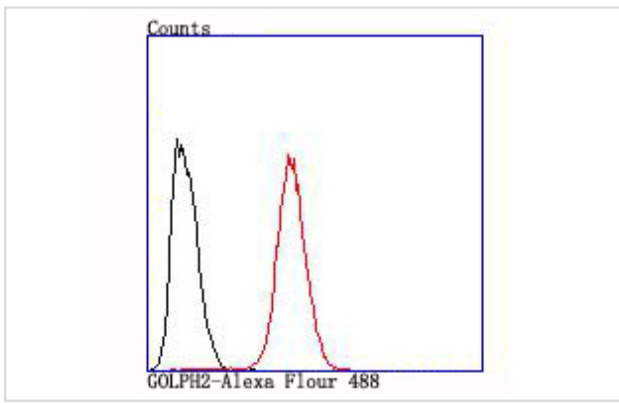
ICC staining GOLPH2 in 293T cells (green). The nuclear counter stain is DAPI (blue). Cells were fixed in paraformaldehyde, permeabilised with 0.25% Triton X100/PBS.



ICC staining GOLPH2 in Hela cells (green). The nuclear counter stain is DAPI (blue). Cells were fixed in paraformaldehyde, permeabilised with 0.25% Triton X100/PBS.



ICC staining GOLPH2 in A549 cells (green). The nuclear counter stain is DAPI (blue). Cells were fixed in paraformaldehyde, permeabilised with 0.25% Triton X100/PBS.



Flow cytometric analysis of Hela cells with GOLPH2 antibody at 1/100 dilution (red) compared with an unlabelled control (cells without incubation with primary antibody; black).

## Background

GP73 (also known as Golgi phosphoprotein 2, GOLPH 2 or Golgi membrane protein), is a widely expressed, epithelial-specific, type II transmembrane protein which resides in the Golgi apparatus, where it is responsible for the posttranslational modification of proteins produced in the Rough ER while assisting in the transport of proteins through the Golgi. The human GP73 gene has been mapped within a BAC and localized to chromosome 9q21.33. GP73 levels rise in those who have been diagnosed with acute and chronic liver diseases.

## References

Note: This product is for in vitro research use only